



International Office

Everest Biotech Ltd

Vector Laboratories, Inc.
6737 Mowry Ave
Newark, CA 94560
United States

Customer Service:

customerservice@vectorlabs.com

Technical Service:

technical@vectorlabs.com

Tel: +1 (800) 227-6666

www.everestbiotech.com

**Research Use Only. Not for
diagnostic or therapeutic use.**

EB11515 - Goat Anti-beta-2-microglobulin Antibody

Size: 100µg specific antibody in 200µl



Target Protein

Principal Names: B2M, beta chain of MHC class I molecules, beta-2-microglobulin, beta-2-microglobulin, OTTHUMP00000161912

Official Symbol: B2M

Accession Number(s): NP_004039.1

Human GeneID(s): [567](#)

Immunogen

Peptide with sequence QRTPKIQVYSRHP-C, from the N Terminus of the protein sequence according to NP_004039.1.

Please note the [peptide](#) is available for sale.

Purification and Storage

Purified from goat serum by ammonium sulphate precipitation followed by antigen affinity chromatography using the immunizing peptide.

Supplied at 0.5 mg/ml in Tris saline, 0.02% sodium azide, pH7.3 with 0.5% bovine serum albumin.

Aliquot and store at -20°C. Minimize freezing and thawing.

Applications Tested

Peptide ELISA: antibody detection limit dilution 1:32000.

Western blot: Preliminary testing showed a band at approx. 12-13kDa in Human Spleen lysate and in Jurkat, U251, U2OS, U937 and HeLa cell lysate after 0.3-1µg/ml antibody staining (calculated MW of 13.7kDa according to NP_004039.1). Primary incubation 1 hour at room temperature.

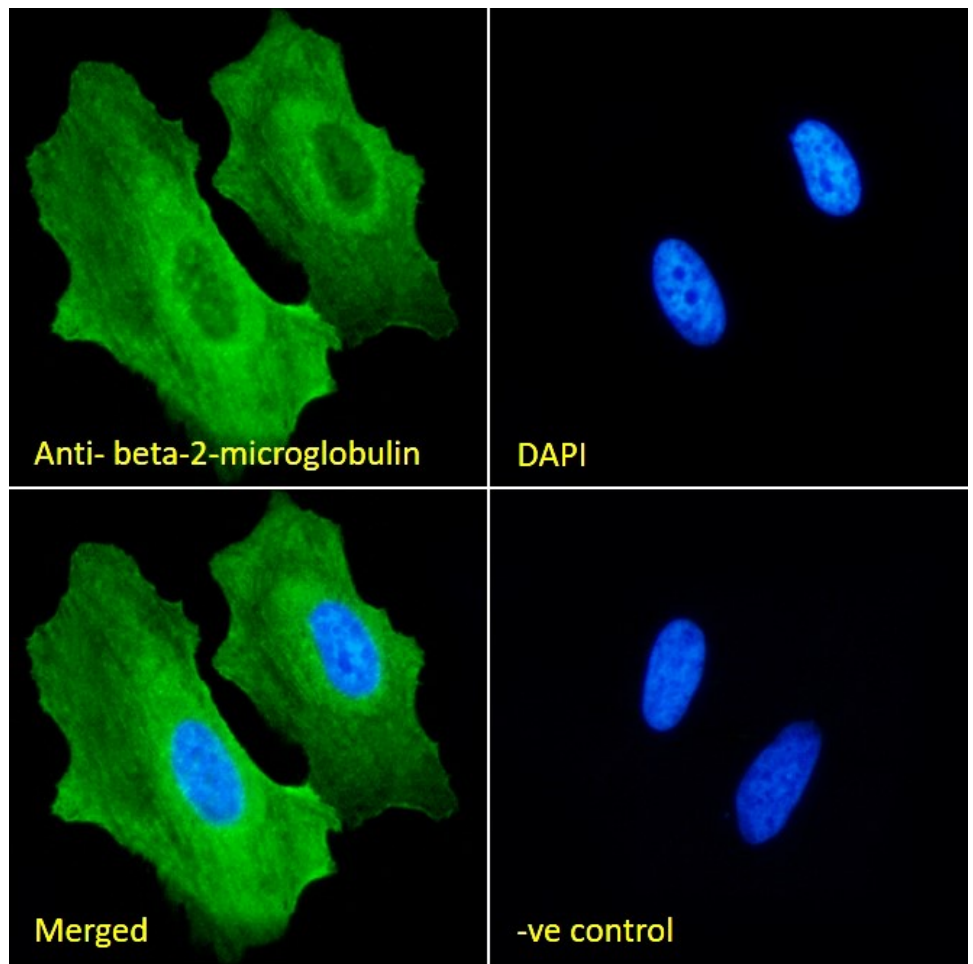
Immunofluorescence: Strong expression of the protein seen in the plasma membranes and cytoplasm of HeLa cells. Recommended concentration: 10µg/ml.

Flow Cytometry: Flow cytometric analysis of HeLa cells. Recommended concentration: 10ug/ml.

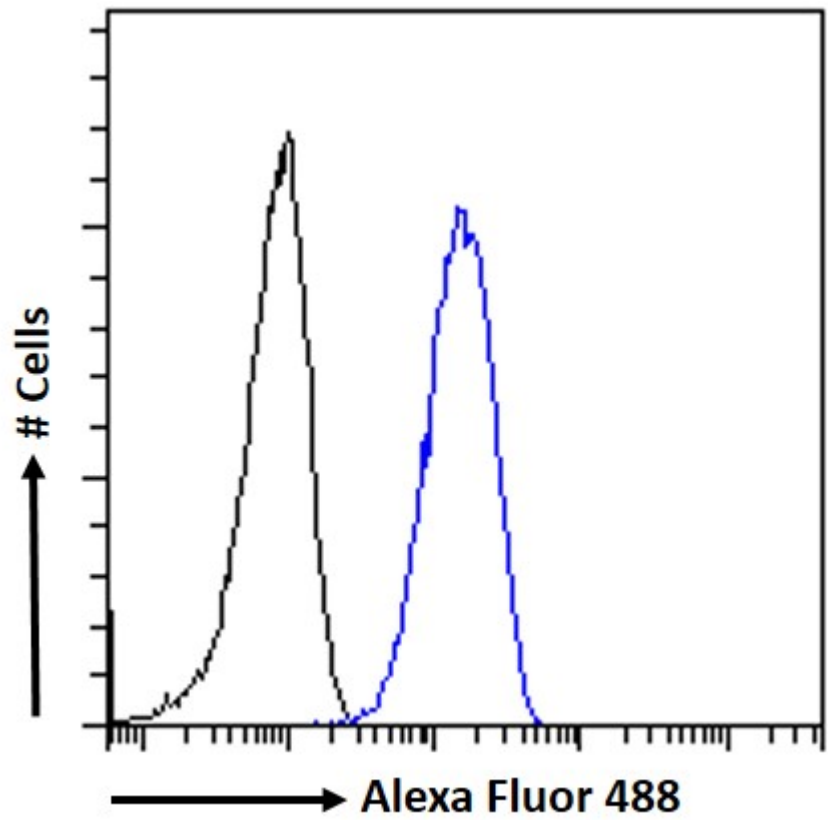
Species Reactivity

Tested: Human

Expected from sequence similarity: Human



EB11515 Immunofluorescence analysis of paraformaldehyde fixed HeLa cells, permeabilized with 0.15% Triton. Primary incubation 1hr (10ug/ml) followed by Alexa Fluor 488 secondary antibody (2ug/ml), showing plasma membrane and cytoplasmic staining. The nuclear stain is DAPI (blue). Negative control: Unimmunized goat IgG (10ug/ml) followed by Alexa Fluor 488 secondary antibody (2ug/ml).



EB11515 Flow cytometric analysis of paraformaldehyde fixed HeLa cells (blue line), permeabilized with 0.5% Triton. Primary incubation 1hr (10ug/ml) followed by Alexa Fluor 488 secondary antibody (1ug/ml). IgG control: Unimmunized goat IgG (black line) followed by Alexa Fluor 488 secondary antibody.