



UK Office

Everest Biotech Ltd

Cherwell Innovation Centre
77 Heyford Park
Upper Heyford
Oxfordshire
OX25 5HD
UK

Enquiries:

info@everestbiotech.com

Sales:

sales@everestbiotech.com

Tech support:

support@everestbiotech.com

Tel: +44 (0)1869 238326

Fax: +44 (0)1869 238327

US Office

Everest Biotech c/o Abcore

405 Maple Street, Suite A106
Ramona,
CA 92065
USA

Inquiries:

info@everestbiotech.com

Sales:

usasales@everestbiotech.com

Tech support:

support@everestbiotech.com

Tel: 888-320-4628 (toll-free)

Fax: 888-841-9041

www.everestbiotech.com

**Research Use Only. Not for
diagnostic or therapeutic use.**

EB09818 - Goat Anti-BICC1 (aa223-234) Antibody

Size: 100µg specific antibody in 200µl



Target Protein

Principal Names: bicaudal C homolog 1, bicaudal C homolog 1 (Drosophila), DKFZp686I21119, BICC1

Official Symbol: BICC1

Accession Number(s): NP_001073981.1

Human GeneID(s): [80114](#)

Non-Human GeneID(s): 361832 (rat)

Immunogen

Peptide with sequence C-PNSPSIQHISQT, from the internal region of the protein sequence according to NP_001073981.1.

Please note the [peptide](#) is available for sale.

Purification and Storage

Purified from goat serum by ammonium sulphate precipitation followed by antigen affinity chromatography using the immunizing peptide.

Supplied at 0.5 mg/ml in Tris saline, 0.02% sodium azide, pH7.3 with 0.5% bovine serum albumin.

Aliquot and store at -20°C. Minimize freezing and thawing.

Applications Tested

Peptide ELISA: antibody detection limit dilution 1:8000.

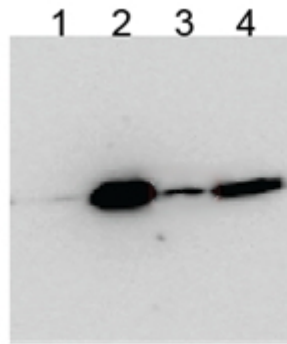
Western blot: Preliminary experiments in Human Brain (Cerebellum), Kidney, Lung and Pancreas lysates gave no specific signal but low background (at antibody concentration up to 1µg/ml). We would appreciate any feedback from people in the field - have any results been reported with other antibodies/lysates?

Immunoprecipitation: Immunoprecipitation by EB09818 from lysates of HEK293 transfected and overexpressing FLAG-HA-BICC1. Precipitation works best in the presence of SDS. Data kindly provided by anonymous customer.

Species Reactivity

Tested: Human

Expected from sequence similarity: Human, Rat, Dog, Cow



1. native, EB09818
2. native, anti-FLAG
3. SDS, EB09818
4. SDS, anti-FLAG

HEK293 overexpressing Human BICC1 with N-terminal FLAG, probed with rabbit anti-BCC1 in Western Blot after IP using either EB09818 or anti-FLAG antibody in the presence or absence of SDS.