



UK Office

Everest Biotech Ltd

Cherwell Innovation Centre
77 Heyford Park
Upper Heyford
Oxfordshire
OX25 5HD
UK

Enquiries:

info@everestbiotech.com

Sales:

sales@everestbiotech.com

Tech support:

support@everestbiotech.com

Tel: +44 (0)1869 238326

Fax: +44 (0)1869 238327

US Office

Everest Biotech c/o Abcore

405 Maple Street, Suite A106
Ramona,
CA 92065
USA

Inquiries:

info@everestbiotech.com

Sales:

usasales@everestbiotech.com

Tech support:

support@everestbiotech.com

Tel: 888-320-4628 (toll-free)

Fax: 888-841-9041

www.everestbiotech.com

**Research Use Only. Not for
diagnostic or therapeutic use.**

EB06412 - Goat Anti-BIM Antibody

Size: 100µg specific antibody in 200µl



Target Protein

Principal Names: BCL2L11, BCL2-like 11 (apoptosis facilitator), BAM, BIM, BOD, bcl-2 interacting mediator of cell death, bcl-2 interacting protein Bim, bcl-2-like protein 11, bcl-2-related ovarian death agonist, bcl2-L-11, Bim-alpha1, Bim-alpha2, Bim-alpha3

Official Symbol: BCL2L11

Accession Number(s): NP_619528.1; NP_619529.1; NP_996886.1;

Human GeneID(s): [10018](#)

Important Comments: This antibody is expected to recognise at least reported isoforms Bim-alpha1 (BimABCD), Bim-alpha2 (BimACD) and Bim-alpha3 (BimAD).

Immunogen

Peptide with sequence C-FNAYYARRLEK, from the C Terminus of the protein sequence according to NP_619528.1; NP_619529.1; NP_996886.1;.

Please note the [peptide](#) is available for sale.

Purification and Storage

Purified from goat serum by ammonium sulphate precipitation followed by antigen affinity chromatography using the immunizing peptide.

Supplied at 0.5 mg/ml in Tris saline, 0.02% sodium azide, pH7.3 with 0.5% bovine serum albumin.

Aliquot and store at -20°C. Minimize freezing and thawing.

Applications Tested

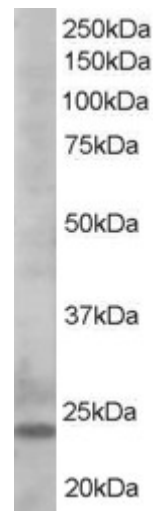
Peptide ELISA: antibody detection limit dilution 1:16000.

Western blot: Approx 23kDa band observed in lysates of cell line K562 (calculated MW of 18.5kDa according to NP_619528.1). Recommended for use at 0.5-2µg/ml. Primary incubated 1 hour at room temperature.

Species Reactivity

Tested: Human

Expected from sequence similarity: Human



EB06412 staining (0.5 μ g/ml) of K562 cell lysate (35 μ g protein in RIPA buffer). Detected by chemiluminescence.