



International Office

Everest Biotech Ltd

Vector Laboratories, Inc.
6737 Mowry Ave
Newark, CA 94560
United States

Customer Service:

customerservice@vectorlabs.com

Technical Service:

technical@vectorlabs.com

Tel: +1 (800) 227-6666

www.everestbiotech.com

**Research Use Only. Not for
diagnostic or therapeutic use.**

EB11942 - Goat Anti-biotinidase (aa372-385) Antibody

Size: 100µg specific antibody in 200µl



Target Protein

Principal Names: BTB, biotinidase, OTTHUMP00000160300, OTTHUMP00000209134, OTTHUMP00000209135, OTTHUMP00000209138, biotinase

Official Symbol: BTB

Accession Number(s): NP_000051.1

Human GeneID(s): [686](#)

Immunogen

Peptide with sequence EKDAQEVHCDEATK, from the internal region of the protein sequence according to NP_000051.1.

Please note the [peptide](#) is available for sale.

Purification and Storage

Purified from goat serum by ammonium sulphate precipitation followed by antigen affinity chromatography using the immunizing peptide.

Supplied at 0.5 mg/ml in Tris saline, 0.02% sodium azide, pH7.3 with 0.5% bovine serum albumin.

Aliquot and store at -20°C. Minimize freezing and thawing.

Applications Tested

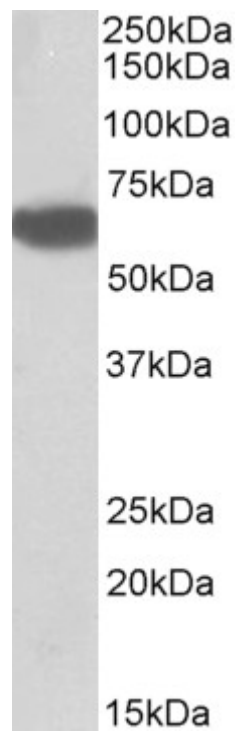
Peptide ELISA: antibody detection limit dilution 1:4000.

Western blot: Approx 60kDa band observed in Human Liver lysates (calculated MW of 61.1kDa according to NP_000051.1). Recommended concentration: 0.5-1.5µg/ml.

Species Reactivity

Tested: Human

Expected from sequence similarity: Human



EB11942 (0.5 μ g/ml) staining of Human Liver lysate (35 μ g protein in RIPA buffer). Primary incubation was 1 hour.
Detected by chemiluminescence.