



UK Office

Everest Biotech Ltd

Cherwell Innovation Centre
77 Heyford Park
Upper Heyford
Oxfordshire
OX25 5HD
UK

Enquiries:

info@everestbiotech.com

Sales:

sales@everestbiotech.com

Tech support:

support@everestbiotech.com

Tel: +44 (0)1869 238326

Fax: +44 (0)1869 238327

US Office

Everest Biotech c/o Abcore

405 Maple Street, Suite A106
Ramona,
CA 92065
USA

Inquiries:

info@everestbiotech.com

Sales:

usasales@everestbiotech.com

Tech support:

support@everestbiotech.com

Tel: 888-320-4628 (toll-free)

Fax: 888-841-9041

www.everestbiotech.com

**Research Use Only. Not for
diagnostic or therapeutic use.**

EB10370 - Goat Anti-BIRC3 (aa 109 -118) Antibody

Size: 100µg specific antibody in 200µl



Target Protein

Principal Names: AIP1, API2, apoptosis inhibitor 2, baculoviral IAP repeat-containing 3, baculoviral IAP repeat-containing protein 3, CIAP2, c-IAP2, HAIP1, HIAP1, MALT2, MIHC, RNF49, TNFR2-TRAF signaling complex protein, BIRC3

Official Symbol: BIRC3

Accession Number(s): NP_001156.1

Human GeneID(s): [330](#)

Important Comments: Reported variants represent identical protein: NP_892007.1, NP_001156.1

Immunogen

Peptide with sequence C-SQPTFPSSVT, from the internal region of the protein sequence according to NP_001156.1.

Please note the [peptide](#) is available for sale.

Purification and Storage

Purified from goat serum by ammonium sulphate precipitation followed by antigen affinity chromatography using the immunizing peptide.

Supplied at 0.5 mg/ml in Tris saline, 0.02% sodium azide, pH7.3 with 0.5% bovine serum albumin.

Aliquot and store at -20°C. Minimize freezing and thawing.

Applications Tested

Peptide ELISA: antibody detection limit dilution 1:32000.

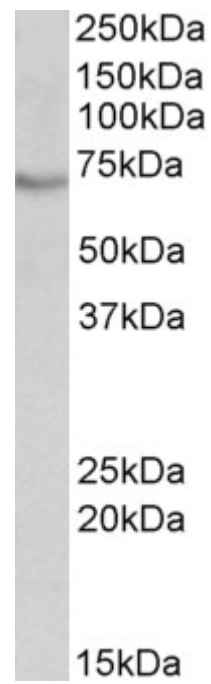
Western blot: Approx 70kDa band observed in lysates of cell line HeLa (calculated MW of 68.4kDa according to NP_001156.1). Recommended concentration: 0.1-0.3µg/ml.

IHC: Paraffin embedded Human Tonsil. Recommended concentration: 5µg/ml.

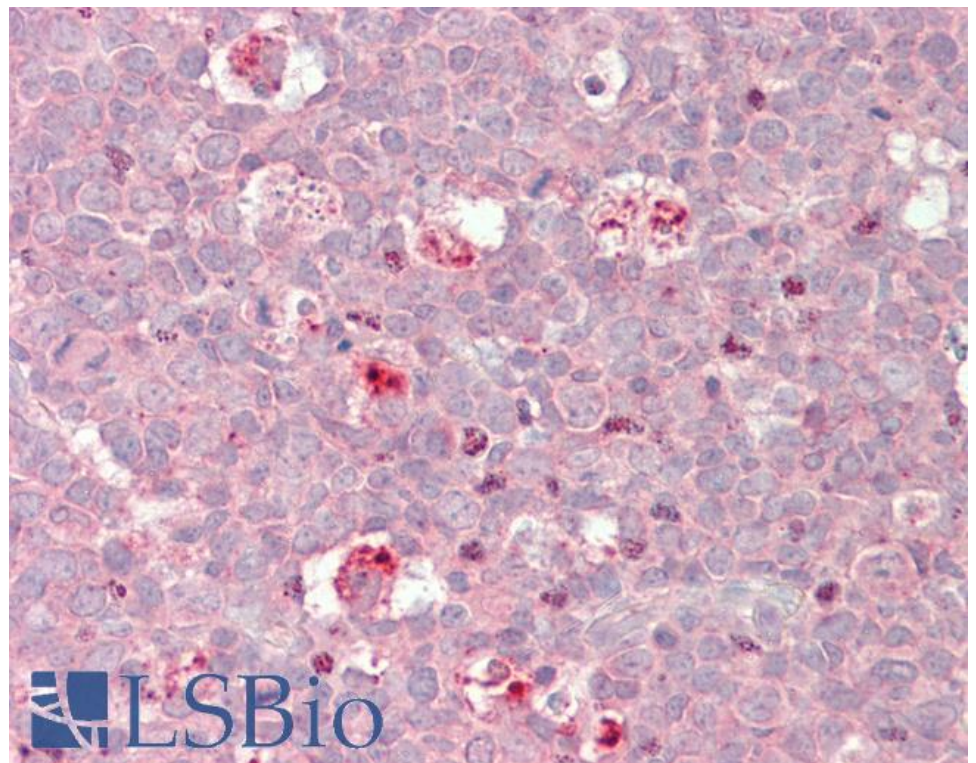
Species Reactivity

Tested: Human

Expected from sequence similarity: Human



EB10370 (0.1 μ g/ml) staining of HeLa lysate (35 μ g protein in RIPA buffer). Primary incubation was 1 hour.
Detected by chemiluminescence.



EB10370 (5 μ g/ml) staining of paraffin embedded Human Tonsil. Steamed antigen retrieval with citrate buffer pH 6, AP-staining.