



## UK Office

### Everest Biotech Ltd

Cherwell Innovation Centre  
77 Heyford Park  
Upper Heyford  
Oxfordshire  
OX25 5HD  
UK

Enquiries:

[info@everestbiotech.com](mailto:info@everestbiotech.com)

Sales:

[sales@everestbiotech.com](mailto:sales@everestbiotech.com)

Tech support:

[support@everestbiotech.com](mailto:support@everestbiotech.com)

Tel: +44 (0)1869 238326

Fax: +44 (0)1869 238327

## US Office

### Everest Biotech c/o Abcore

405 Maple Street, Suite A106  
Ramona,  
CA 92065  
USA

Inquiries:

[info@everestbiotech.com](mailto:info@everestbiotech.com)

Sales:

[usasales@everestbiotech.com](mailto:usasales@everestbiotech.com)

Tech support:

[support@everestbiotech.com](mailto:support@everestbiotech.com)

Tel: 888-320-4628 (toll-free)

Fax: 888-841-9041

[www.everestbiotech.com](http://www.everestbiotech.com)

**Research Use Only. Not for  
diagnostic or therapeutic use.**

## EB05760 - Goat Anti-BIRC6 / Apollon Antibody

Size: 100µg specific antibody in 200µl



### Target Protein

**Principal Names:** BIRC6, baculoviral IAP repeat-containing 6 (apollon), KIAA1289, baculoviral IAP repeat-containing 6, BRUCE, APOLLON, FLJ13726, FLJ13786, KIAA1289, ubiquitin-conjugating BIR-domain enzyme apollon

**Official Symbol:** BIRC6

**Accession Number(s):** NP\_057336.3

**Human GeneID(s):** [57448](#)

### Immunogen

Peptide with sequence C-PSSSKELPSDFQL, from the C Terminus of the protein sequence according to NP\_057336.3.

Please note the [peptide](#) is available for sale.

### Purification and Storage

Purified from goat serum by ammonium sulphate precipitation followed by antigen affinity chromatography using the immunizing peptide.

Supplied at 0.5 mg/ml in Tris saline, 0.02% sodium azide, pH7.3 with 0.5% bovine serum albumin.

Aliquot and store at -20°C. Minimize freezing and thawing.

### Applications Tested

**Peptide ELISA:** antibody detection limit dilution 1:16000.

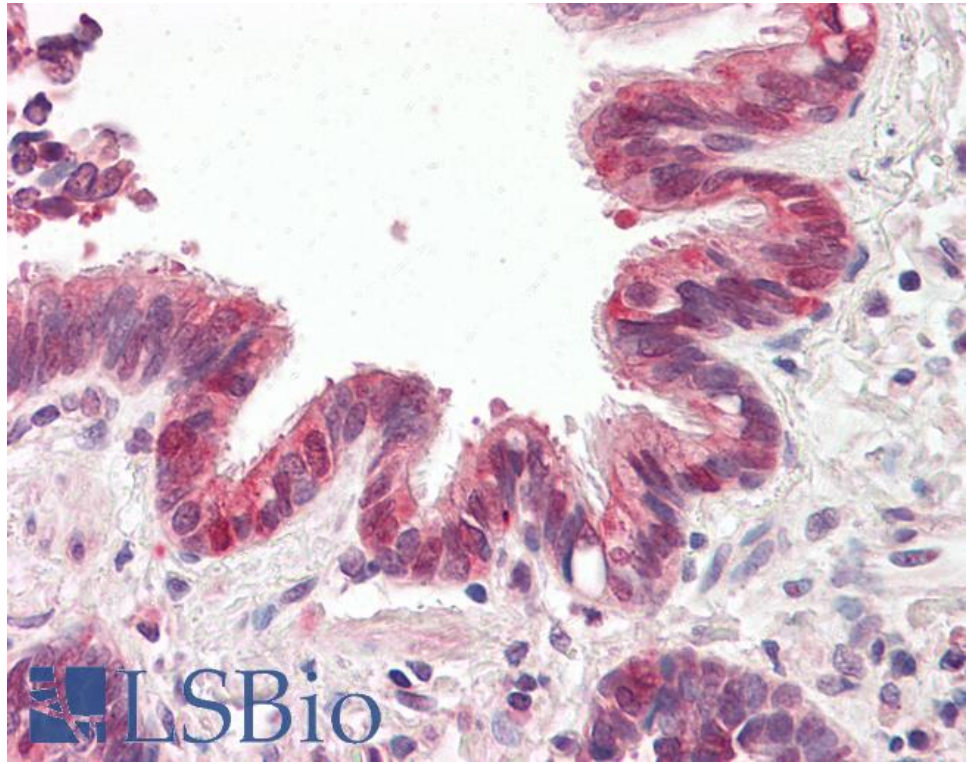
**Western blot:** Preliminary experiments gave no signal but low background in Human Liver and Kidney lysates at up to 1µg/ml. However this used our routine western blotting protocol which we would not expect to reliably detect proteins as large as the predicted size of approx. 555KDa according to NP\_057336.

**IHC:** Paraffin embedded Human Lung. Recommended concentration: 3.75µg/ml.

### Species Reactivity

**Tested:** Human

**Expected from sequence similarity:** Human



EB05760 (3.75µg/ml) staining of paraffin embedded Human Lung. Steamed antigen retrieval with citrate buffer pH 6, AP-staining.