



## UK Office

### Everest Biotech Ltd

Cherwell Innovation Centre  
77 Heyford Park  
Upper Heyford  
Oxfordshire  
OX25 5HD  
UK

Enquiries:

[info@everestbiotech.com](mailto:info@everestbiotech.com)

Sales:

[sales@everestbiotech.com](mailto:sales@everestbiotech.com)

Tech support:

[support@everestbiotech.com](mailto:support@everestbiotech.com)

Tel: +44 (0)1869 238326

[www.everestbiotech.com](http://www.everestbiotech.com)

**Research Use Only. Not for  
diagnostic or therapeutic use.**

## EB07997 - Goat Anti-Bisphosphate 3'-nucleotidase Antibody

Size: 100µg specific antibody in 200µl



### Target Protein

**Principal Names:** bisphosphate 3'-nucleotidase, 3'(2'), 5'-bisphosphate nucleotidase 1, PIP, BPntase, PAP-inositol-1,4-phosphatase

**Official Symbol:** BPNT1

**Accession Number(s):** NP\_006076.4

**Human GeneID(s):** [10380](#)

**Non-Human GeneID(s):** 23827 (mouse), 64473 (rat)

### Immunogen

Peptide with sequence C-RNYDYYASRVESIK, from the C Terminus of the protein sequence according to NP\_006076.4.

Please note the [peptide](#) is available for sale.

### Purification and Storage

Purified from goat serum by ammonium sulphate precipitation followed by antigen affinity chromatography using the immunizing peptide.

Supplied at 0.5 mg/ml in Tris saline, 0.02% sodium azide, pH7.3 with 0.5% bovine serum albumin.

Aliquot and store at -20°C. Minimize freezing and thawing.

### Applications Tested

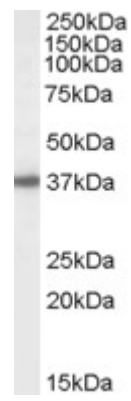
**Peptide ELISA:** antibody detection limit dilution 1:4000.

**Western blot:** Approx 37kDa band observed in Human Liver lysates (calculated MW of 33.4kDa according to NP\_006076.4). The observed molecular weight corresponds to earlier findings in literature with different antibodies (Spiegelberg et al, J Biol Chem. 1999 May 7;274(19):13619-28.; PMID: 10224133). Recommended concentration: 1-3µg/ml.

### Species Reactivity

**Tested:** Human

**Expected from sequence similarity:** Human, Mouse, Rat



EB07997 (1µg/ml) staining of Human Liver lysate (35µg protein in RIPA buffer). Primary incubation was 1 hour.  
Detected by chemiluminescence.