



International Office

Everest Biotech Ltd

Vector Laboratories, Inc.
6737 Mowry Ave
Newark, CA 94560
United States

Customer Service:

customerservice@vectorlabs.com

Technical Service:

technical@vectorlabs.com

Tel: +1 (800) 227-6666

www.everestbiotech.com

**Research Use Only. Not for
diagnostic or therapeutic use.**

EB10736 - Goat Anti-BLK Antibody

Size: 100µg specific antibody in 200µl



Target Protein

Principal Names: BLK, B lymphoid tyrosine kinase, MGC10442, MODY11,

Official Symbol: BLK

Accession Number(s): NP_001706.2

Human GeneID(s): [640](#)

Immunogen

Peptide with sequence QWSPLKVSAQDKD-C, from the N Terminus (near) of the protein sequence according to NP_001706.2.

Please note the [peptide](#) is available for sale.

Purification and Storage

Purified from goat serum by ammonium sulphate precipitation followed by antigen affinity chromatography using the immunizing peptide.

Supplied at 0.5 mg/ml in Tris saline, 0.02% sodium azide, pH7.3 with 0.5% bovine serum albumin.

Aliquot and store at -20°C. Minimize freezing and thawing.

Applications Tested

Peptide ELISA: antibody detection limit dilution 1:128000.

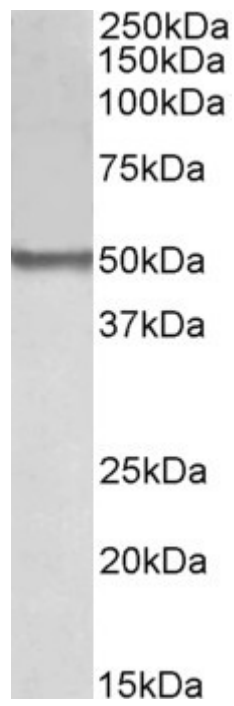
Western blot: Approx 50kDa band observed in Human Thymus, Spleen and Lymph Node lysates (calculated MW of 57.7kDa according to NP_001706.2). Recommended concentration: 0.1-0.3µg/ml. Primary incubation was 1 hour.

IHC: Paraffin embedded Human Spleen. Recommended concentration: 3.75µg/ml.

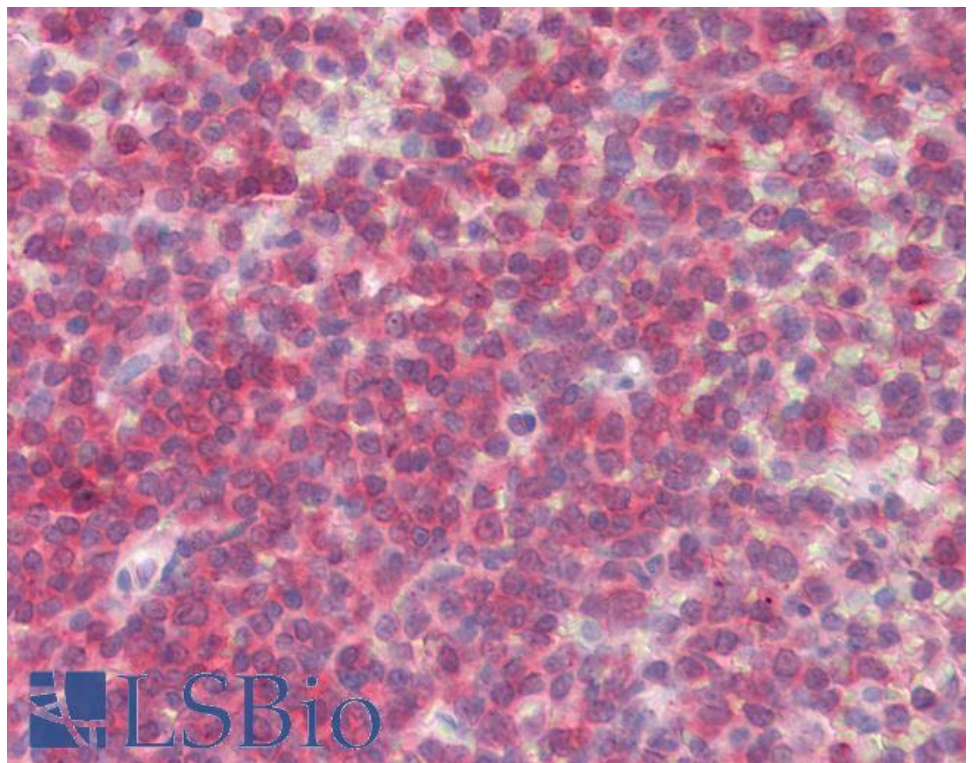
Species Reactivity

Tested: Human

Expected from sequence similarity: Human



EB10736 (0.1 μ g/ml) staining of Human Thymus lysate (35 μ g protein in RIPA buffer). Detected by chemiluminescence.



EB10736 (3.75 μ g/ml) staining of paraffin embedded Human Spleen. Steamed antigen retrieval with citrate buffer pH 6, AP-staining.