

## UK Office

### Everest Biotech Ltd

Cherwell Innovation Centre  
77 Heyford Park  
Upper Heyford  
Oxfordshire  
OX25 5HD  
UK

Enquiries:

[info@everestbiotech.com](mailto:info@everestbiotech.com)

Sales:

[sales@everestbiotech.com](mailto:sales@everestbiotech.com)

Tech support:

[support@everestbiotech.com](mailto:support@everestbiotech.com)

Tel: +44 (0)1869 238326

[www.everestbiotech.com](http://www.everestbiotech.com)

**Research Use Only. Not for  
diagnostic or therapeutic use.**

## EB12496 - Goat Anti-BMI1 Antibody

Size: 100µg specific antibody in 200µl



### Target Protein

**Principal Names:** BMI1, BMI1 polycomb ring finger oncogene, FLV12/BMI1, PCGF4, RNF51, B lymphoma Mo-MLV insertion region 1 homolog, flvi-2/bmi-1, murine leukemia viral (bmi-1) oncogene homolog, polycomb complex protein BMI-1, polycomb group RING finger protein 4, polycomb

**Official Symbol:** BMI1

**Accession Number(s):** NP\_005171.4

**Human GeneID(s):** [648](#)

### Immunogen

Peptide with sequence C-NHQSSFANRPRKS, from the C Terminus of the protein sequence according to NP\_005171.4.

Please note the [peptide](#) is available for sale.

### Purification and Storage

Purified from goat serum by ammonium sulphate precipitation followed by antigen affinity chromatography using the immunizing peptide.

Supplied at 0.5 mg/ml in Tris saline, 0.02% sodium azide, pH7.3 with 0.5% bovine serum albumin.

Aliquot and store at -20°C. Minimize freezing and thawing.

### Applications Tested

**Peptide ELISA:** antibody detection limit dilution 1:128000.

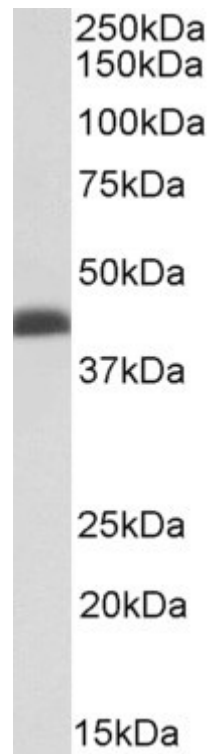
**Western blot:** Approx 40kDa band observed in nuclear lysates of cell line K562 (calculated MW of 36.9kDa according to NP\_005171.4). This band corresponds to earlier findings in literature with different antibodies (Chagraoui et al, Genes Dev. 2006 Aug 1;20(15):2110-20. PMID: 16882984). Recommended concentration: 0.03-0.1µg/ml.

**IHC:** Paraffin embedded Human Colon. Recommended concentration: 5µg/ml.

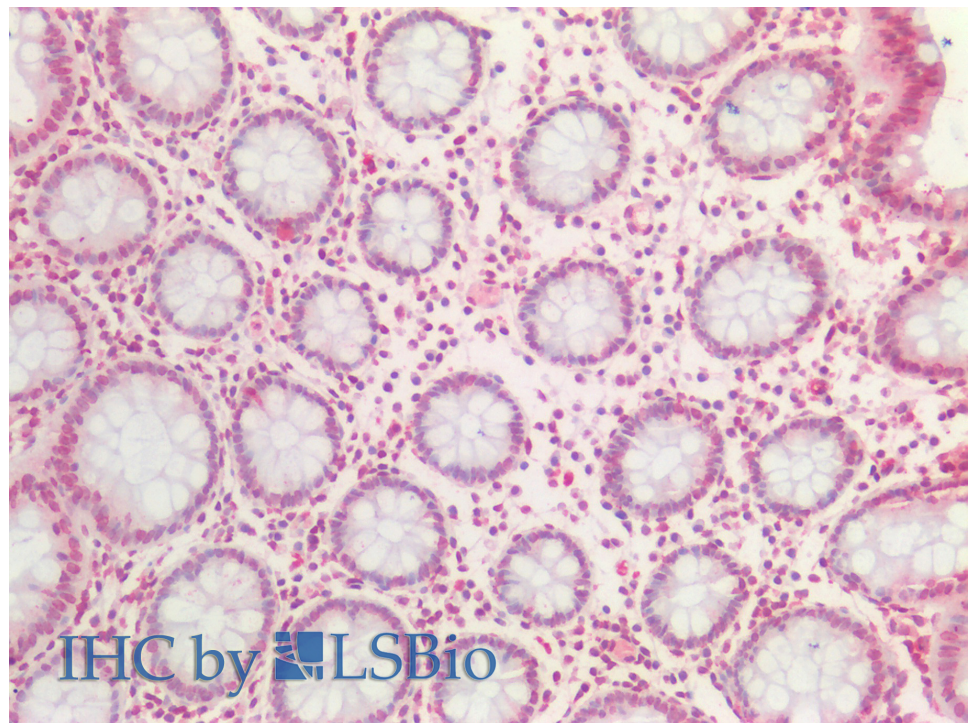
### Species Reactivity

**Tested:** Human

**Expected from sequence similarity:** Human, Dog, Pig, Cow



EB12496 (0.03 $\mu$ g/ml) staining of K562 nuclear lysate (35 $\mu$ g protein in RIPA buffer). Primary incubation was 1 hour. Detected by chemiluminescence.



EB12496 (5 $\mu$ g/ml) staining of paraffin embedded Human Colon. Steamed antigen retrieval with citrate buffer pH 6, AP-staining.