



International Office

Everest Biotech Ltd

Vector Laboratories, Inc.
6737 Mowry Ave
Newark, CA 94560
United States

Customer Service:

customerservice@vectorlabs.com

Technical Service:

technical@vectorlabs.com

Tel: +1 (800) 227-6666

www.everestbiotech.com

**Research Use Only. Not for
diagnostic or therapeutic use.**

EB07979 - Goat Anti-BNIP1 Antibody

Size: 100µg specific antibody in 200µl



Target Protein

Principal Names: BNIP1, BCL2/adenovirus E1B 19kDa interacting protein 1, NIP1, SEC20, TRG-8, BCL2/adenovirus E1B 19kD interacting protein 1, BCL2/adenovirus E1B 19kD-interacting protein 1

Official Symbol: BNIP1

Accession Number(s): NP_001196.1; NP_053581.1; NP_053582.1; NP_053583.1

Human GeneID(s): [662](#)

Non-Human GeneID(s): 224630 (mouse), 140932 (rat)

Important Comments: All reported variants represent isoform 1 (NP_001196.1; NP_053581.1; NP_053582.1; NP_053583.1)

Immunogen

Peptide with sequence C-DLLRQRKTTKESLAQ, from the internal region of the protein sequence according to NP_001196.1; NP_053581.1; NP_053582.1; NP_053583.1.

Please note the [peptide](#) is available for sale.

Purification and Storage

Purified from goat serum by ammonium sulphate precipitation followed by antigen affinity chromatography using the immunizing peptide.

Supplied at 0.5 mg/ml in Tris saline, 0.02% sodium azide, pH7.3 with 0.5% bovine serum albumin.

Aliquot and store at -20°C. Minimize freezing and thawing.

Applications Tested

Peptide ELISA: antibody detection limit dilution 1:8000.

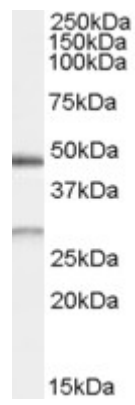
Western blot: Approx 28kDa band observed in Human Kidney lysates (calculated MW of 26.1kDa according to NP_001196.1; NP_053581.1; NP_053582.1; NP_053583.1).

Recommended concentration: 0.5-1.5µg/ml. An additional band of unknown identity was also consistently observed at 48kDa. This band was successfully blocked by incubation with the immunising peptide. We would appreciate any feedback from people in the field - have any such results been reported with other antibodies/lysates? Have any further splice variants/modified forms been reported?

Species Reactivity

Tested: Human

Expected from sequence similarity: Human, Mouse, Rat



EB07979 (0.5 μ g/ml) staining of Human Kidney lysate (35 μ g protein in RIPA buffer). Primary incubation was 1 hour. Detected by chemiluminescence.