



## UK Office

### Everest Biotech Ltd

Cherwell Innovation Centre  
77 Heyford Park  
Upper Heyford  
Oxfordshire  
OX25 5HD  
UK

Enquiries:

[info@everestbiotech.com](mailto:info@everestbiotech.com)

Sales:

[sales@everestbiotech.com](mailto:sales@everestbiotech.com)

Tech support:

[support@everestbiotech.com](mailto:support@everestbiotech.com)

Tel: +44 (0)1869 238326

Fax: +44 (0)1869 238327

## US Office

### Everest Biotech c/o Abcore

405 Maple Street, Suite A106  
Ramona,  
CA 92065  
USA

Inquiries:

[info@everestbiotech.com](mailto:info@everestbiotech.com)

Sales:

[usasales@everestbiotech.com](mailto:usasales@everestbiotech.com)

Tech support:

[support@everestbiotech.com](mailto:support@everestbiotech.com)

Tel: 888-320-4628 (toll-free)

Fax: 888-841-9041

[www.everestbiotech.com](http://www.everestbiotech.com)

**Research Use Only. Not for  
diagnostic or therapeutic use.**

## EB06074 - Goat Anti-BOULE / BOLL Antibody

Size: 100µg specific antibody in 200µl



### Target Protein

**Principal Names:** BOLL, bol, boule-like (Drosophila), BOULE, boule

**Official Symbol:** BOLL

**Accession Number(s):** NP\_932074.1; NP\_149019.1

**Human GeneID(s):** [66037](#)

**Important Comments:** This antibody is expected to recognize both reported isoforms (NP\_932074.1; NP\_149019.1).

### Immunogen

Peptide with sequence C-QPEPIKTVWSIH<sub>Y</sub>, from the C Terminus of the protein sequence according to NP\_932074.1; NP\_149019.1.

Please note the [peptide](#) is available for sale.

### Purification and Storage

Purified from goat serum by ammonium sulphate precipitation followed by antigen affinity chromatography using the immunizing peptide.

Supplied at 0.5 mg/ml in Tris saline, 0.02% sodium azide, pH7.3 with 0.5% bovine serum albumin.

Aliquot and store at -20°C. Minimize freezing and thawing.

### Applications Tested

**Peptide ELISA:** antibody detection limit dilution 1:32000.

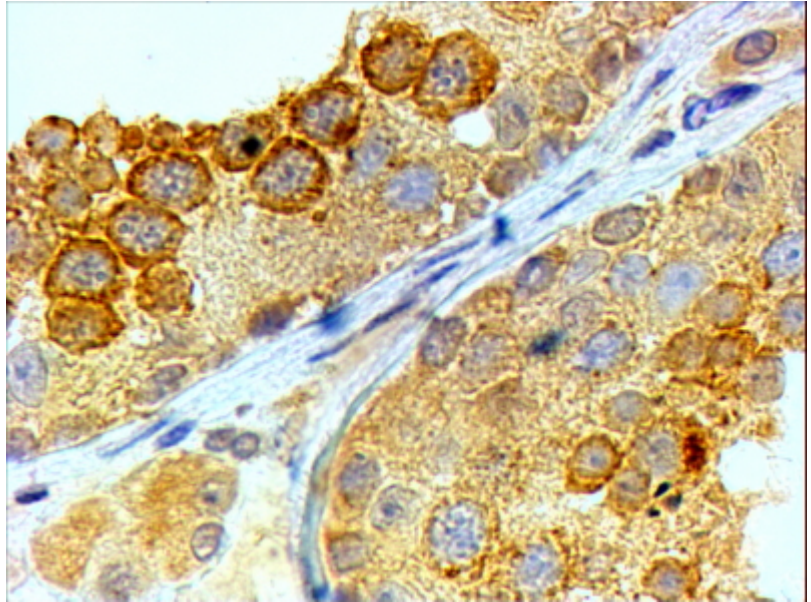
**Western blot:** Preliminary experiments gave an approx 22kDa band in Human Testis lysates after 1.5 µg/ml antibody staining. Please note that currently we cannot find an explanation in the literature for the band we observe given the calculated size of 32.6kDa according to NP\_932074.1 and 31.3kDa according to NP\_149019.1. The 22kDa band was successfully blocked by incubation with the immunizing peptide. However, literature reports a 36kDa band in Human and Mouse Testes (PMID: 11390979 ). Have any further splice variants/modified forms been reported?

**IHC:** In paraffin embedded Human Testis shows cytoplasm staining in spermatocytes, but not in spermatogonia. Recommended concentration, 4-6µg/ml.

### Species Reactivity

**Tested:** Human

**Expected from sequence similarity:** Human, Dog, Cow



EB06074 (4 $\mu$ g/ml) staining of paraffin embedded Human Testis. Steamed antigen retrieval with citrate buffer pH 6, HRP-staining.