

## UK Office

### Everest Biotech Ltd

Cherwell Innovation Centre  
77 Heyford Park  
Upper Heyford  
Oxfordshire  
OX25 5HD  
UK

Enquiries:

[info@everestbiotech.com](mailto:info@everestbiotech.com)

Sales:

[sales@everestbiotech.com](mailto:sales@everestbiotech.com)

Tech support:

[support@everestbiotech.com](mailto:support@everestbiotech.com)

Tel: +44 (0)1869 238326

[www.everestbiotech.com](http://www.everestbiotech.com)

**Research Use Only. Not for  
diagnostic or therapeutic use.**

## EB08634 - Goat Anti-BRM Antibody

Size: 100µg specific antibody in 200µl



### Target Protein

**Principal Names:** SWI/SNF related, matrix associated, actin dependent regulator of chromatin, subfamily a, member 2, BAF190, BRM, FLJ36757, MGC74511, SNF2, SNF2L2, SNF2LA, SWI2, Sth1p, hBRM, hSNF2a, SNF2-alpha, SNF2-like 2, SNF2/SWI2-like protein 2, SWI/SNF-re

**Official Symbol:** SMARCA2

**Accession Number(s):** NP\_003061.3; NP\_620614.2

**Human GeneID(s):** [6595](#)

**Important Comments:** This antibody is expected to recognise both reported isoforms (NP\_003061.3; NP\_620614.2)

### Immunogen

Peptide with sequence C-PSNSQLEIEGNSS, from the internal region of the protein sequence according to NP\_003061.3; NP\_620614.2.

Please note the [peptide](#) is available for sale.

### Purification and Storage

Purified from goat serum by ammonium sulphate precipitation followed by antigen affinity chromatography using the immunizing peptide.

Supplied at 0.5 mg/ml in Tris saline, 0.02% sodium azide, pH7.3 with 0.5% bovine serum albumin.

Aliquot and store at -20°C. Minimize freezing and thawing.

### Applications Tested

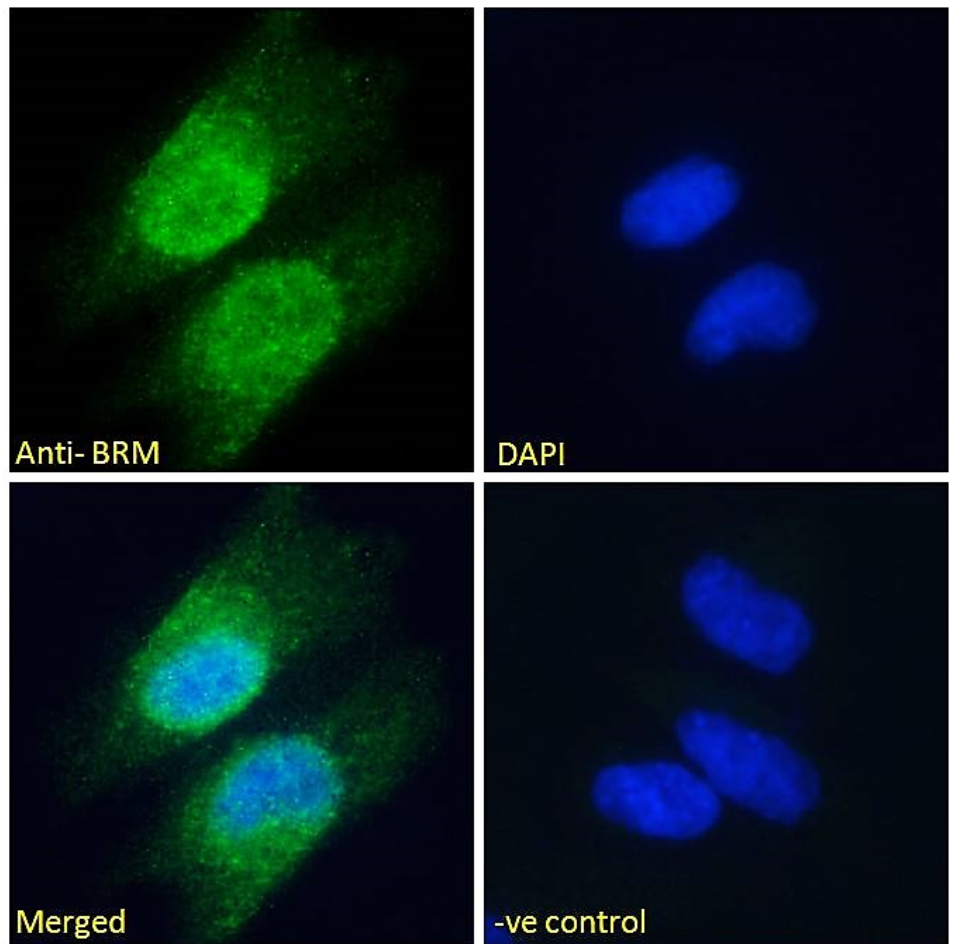
**Peptide ELISA:** antibody detection limit dilution 1:1000.

**Immunofluorescence:** Strong expression of the protein seen in the Nucleus and some staining in the Cytoplasm of HeLa and U251 cells. Recommended concentration: 10µg/ml.

### Species Reactivity

**Tested:** Human

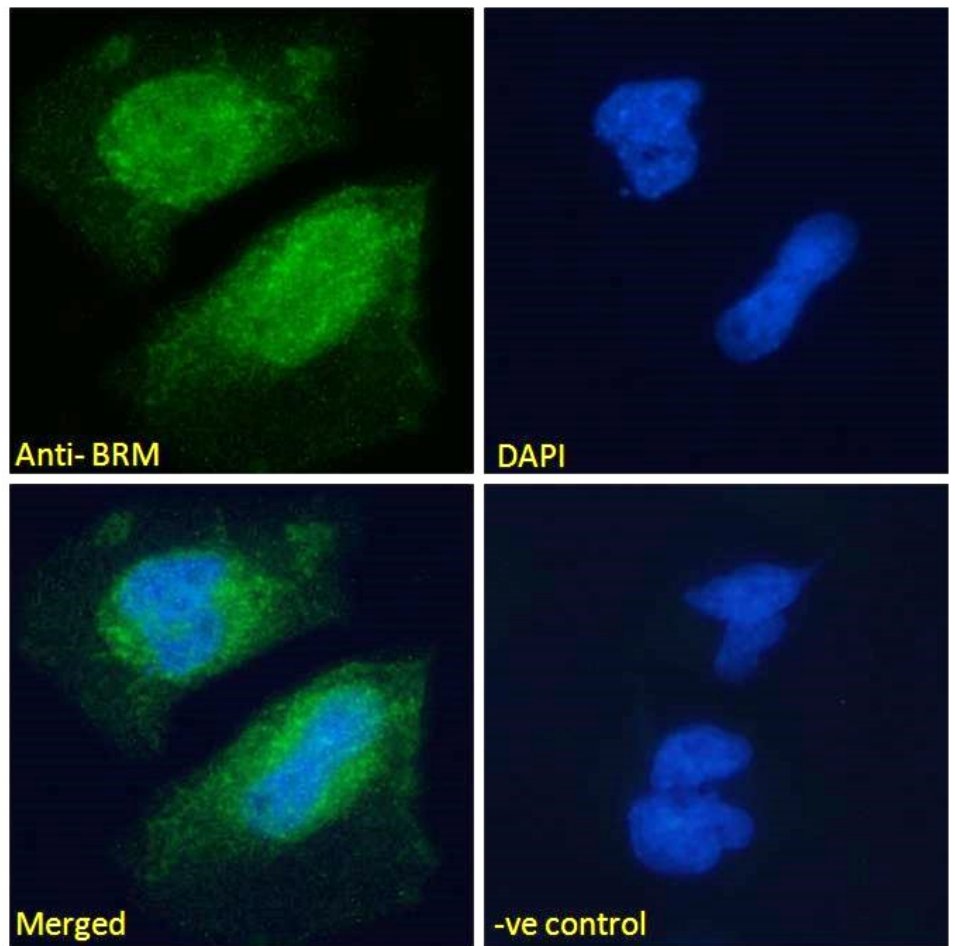
**Expected from sequence similarity:** Human, Rat



EB08634 Immunofluorescence analysis of paraformaldehyde fixed HeLa cells, permeabilized with 0.15% Triton.

Primary incubation 1hr (10ug/ml) followed by Alexa Fluor 488 secondary antibody (2ug/ml), showing predominantly nuclear and some cytoplasmic staining. The nuclear stain is DAPI (blue). Negative control:

Unimmunized goat IgG (10ug/ml) followed by Alexa Fluor 488 secondary antibody (2ug/ml).



EB08634 Immunofluorescence analysis of paraformaldehyde fixed U251 cells, permeabilized with 0.15% Triton. Primary incubation 1hr (10ug/ml) followed by Alexa Fluor 488 secondary antibody (2ug/ml), showing predominantly nuclear and some cytoplasmic staining. The nuclear stain is DAPI (blue). Negative control: Unimmunized goat IgG (10ug/ml) followed by Alexa Fluor 488 secondary antibody (2ug/ml).