



UK Office

Everest Biotech Ltd

Cherwell Innovation Centre
77 Heyford Park
Upper Heyford
Oxfordshire
OX25 5HD
UK

Enquiries:

info@everestbiotech.com

Sales:

sales@everestbiotech.com

Tech support:

support@everestbiotech.com

Tel: +44 (0)1869 238326

Fax: +44 (0)1869 238327

US Office

Everest Biotech c/o Abcore

405 Maple Street, Suite A106
Ramona,
CA 92065
USA

Inquiries:

info@everestbiotech.com

Sales:

usasales@everestbiotech.com

Tech support:

support@everestbiotech.com

Tel: 888-320-4628 (toll-free)

Fax: 888-841-9041

www.everestbiotech.com

**Research Use Only. Not for
diagnostic or therapeutic use.**

EB08634 - Goat Anti-BRM Antibody

Size: 100µg specific antibody in 200µl



Target Protein

Principal Names: SWI/SNF related, matrix associated, actin dependent regulator of chromatin, subfamily a, member 2, BAF190, BRM, FLJ36757, MGC74511, SNF2, SNF2L2, SNF2LA, SWI2, Sth1p, hBRM, hSNF2a, SNF2-alpha, SNF2-like 2, SNF2/SWI2-like protein 2, SWI/SNF-re

Official Symbol: SMARCA2

Accession Number(s): NP_003061.3; NP_620614.2

Human GeneID(s): [6595](#)

Important Comments: This antibody is expected to recognise both reported isoforms (NP_003061.3; NP_620614.2)

Immunogen

Peptide with sequence C-PSNSQLEIEGNSS, from the internal region of the protein sequence according to NP_003061.3; NP_620614.2.

Please note the [peptide](#) is available for sale.

Purification and Storage

Purified from goat serum by ammonium sulphate precipitation followed by antigen affinity chromatography using the immunizing peptide.

Supplied at 0.5 mg/ml in Tris saline, 0.02% sodium azide, pH7.3 with 0.5% bovine serum albumin.

Aliquot and store at -20°C. Minimize freezing and thawing.

Applications Tested

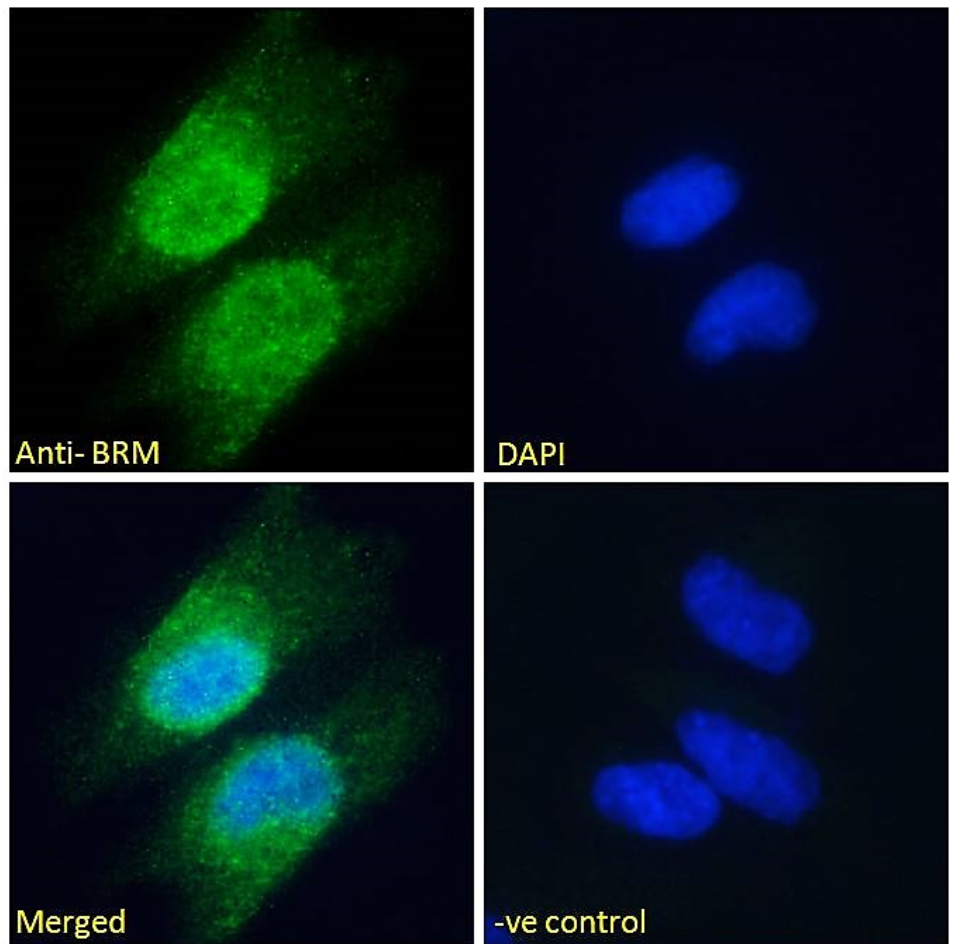
Peptide ELISA: antibody detection limit dilution 1:1000.

Immunofluorescence: Strong expression of the protein seen in the Nucleus and some staining in the Cytoplasm of HeLa and U251 cells. Recommended concentration: 10µg/ml.

Species Reactivity

Tested: Human

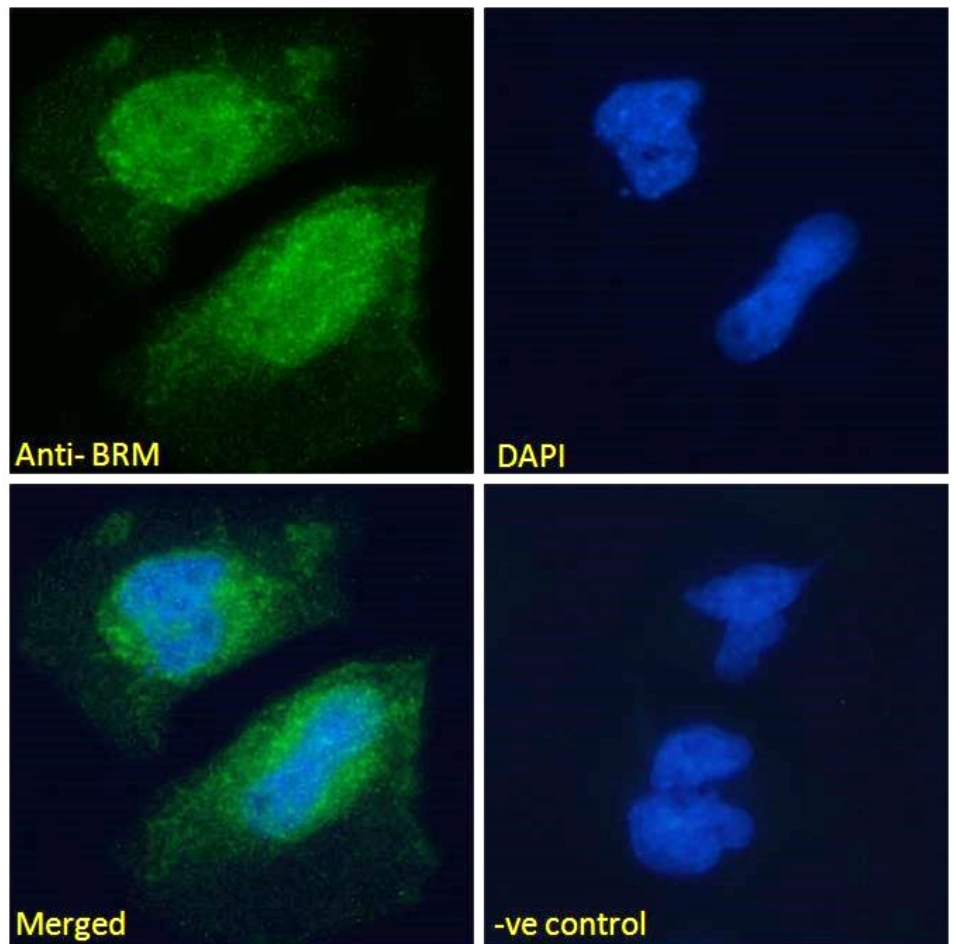
Expected from sequence similarity: Human, Rat



EB08634 Immunofluorescence analysis of paraformaldehyde fixed HeLa cells, permeabilized with 0.15% Triton.

Primary incubation 1hr (10ug/ml) followed by Alexa Fluor 488 secondary antibody (2ug/ml), showing predominantly nuclear and some cytoplasmic staining. The nuclear stain is DAPI (blue). Negative control:

Unimmunized goat IgG (10ug/ml) followed by Alexa Fluor 488 secondary antibody (2ug/ml).



EB08634 Immunofluorescence analysis of paraformaldehyde fixed U251 cells, permeabilized with 0.15% Triton. Primary incubation 1hr (10ug/ml) followed by Alexa Fluor 488 secondary antibody (2ug/ml), showing predominantly nuclear and some cytoplasmic staining. The nuclear stain is DAPI (blue). Negative control: Unimmunized goat IgG (10ug/ml) followed by Alexa Fluor 488 secondary antibody (2ug/ml).