



UK Office

Everest Biotech Ltd

Cherwell Innovation Centre
77 Heyford Park
Upper Heyford
Oxfordshire
OX25 5HD
UK

Enquiries:

info@everestbiotech.com

Sales:

sales@everestbiotech.com

Tech support:

support@everestbiotech.com

Tel: +44 (0)1869 238326

www.everestbiotech.com

**Research Use Only. Not for
diagnostic or therapeutic use.**

EB08045 - Goat Anti-Bruno-like 5 Antibody

Size: 100µg specific antibody in 200µl



Target Protein

Principal Names: BRUNOL5, bruno-like 5, RNA binding protein (Drosophila), BRUNOL-5, CELF5, Bruno (Drosophila) -like 5, RNA binding protein, CUG-BP and ETR-3 like factor 5, RNA-binding protein BRUNOL-5, bruno-like 5, RNA binding protein

Official Symbol: CELF5

Accession Number(s): NP_068757.2

Human GeneID(s): [60680](#)

Immunogen

Peptide with sequence C-EPPGGQPDGMKD, from the internal region (near the N Terminus) of the protein sequence according to NP_068757.2.

Please note the [peptide](#) is available for sale.

Purification and Storage

Purified from goat serum by ammonium sulphate precipitation followed by antigen affinity chromatography using the immunizing peptide.

Supplied at 0.5 mg/ml in Tris saline, 0.02% sodium azide, pH7.3 with 0.5% bovine serum albumin.

Aliquot and store at -20°C. Minimize freezing and thawing.

Applications Tested

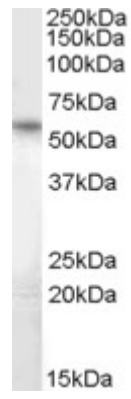
Peptide ELISA: antibody detection limit dilution 1:1000.

Western blot: Approx 55kDa band observed in Human Heart lysates (calculated MW of 52.4kDa according to NP_068757.2). Recommended concentration: 1-3µg/ml.

Species Reactivity

Tested: Human

Expected from sequence similarity: Human



EB08045 (1µg/ml) staining of Human Heart lysate (35µg protein in RIPA buffer). Primary incubation was 1 hour.
Detected by chemiluminescence.