

UK Office

Everest Biotech Ltd

Cherwell Innovation Centre
77 Heyford Park
Upper Heyford
Oxfordshire
OX25 5HD
UK

Enquiries:

info@everestbiotech.com

Sales:

sales@everestbiotech.com

Tech support:

support@everestbiotech.com

Tel: +44 (0)1869 238326

www.everestbiotech.com

**Research Use Only. Not for
diagnostic or therapeutic use.**

EB09035 - Goat Anti-BTLA Antibody

Size: 100µg specific antibody in 200µl



Target Protein

Principal Names: BTLA, B and T lymphocyte associated, BTLA1, CD272, FLJ16065, MGC129743, B and T lymphocyte attenuator

Official Symbol: BTLA

Accession Number(s): NP_861445.3; NP_001078826.1

Human GeneID(s): [151888](#)

Non-Human GeneID(s): 208154 (mouse), 407756 (rat)

Important Comments: This antibody is expected to recognize both reported isoforms (NP_861445.3; NP_001078826.1).

Immunogen

Peptide with sequence KEAPTEYASICVRS, from the C Terminus of the protein sequence according to NP_861445.3; NP_001078826.1.

Please note the [peptide](#) is available for sale.

Purification and Storage

Purified from goat serum by ammonium sulphate precipitation followed by antigen affinity chromatography using the immunizing peptide.

Supplied at 0.5 mg/ml in Tris saline, 0.02% sodium azide, pH7.3 with 0.5% bovine serum albumin.

Aliquot and store at -20°C. Minimize freezing and thawing.

Applications Tested

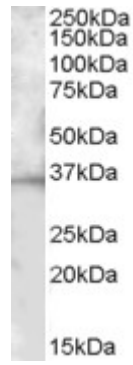
Peptide ELISA: antibody detection limit dilution 1:4000.

Western blot: Approx. 35kDa band observed in Mouse Spleen lysates (calculated MW of 32.8kDa according to Human NP_861445.3 and of 34.2kDa according to Mouse NP_001032808.2). Recommended concentration: 1-3µg/ml.

Species Reactivity

Tested: Mouse

Expected from sequence similarity: Human, Mouse, Rat



EB09035 (1 μ g/ml) staining of Mouse Spleen lysate (35 μ g protein in RIPA buffer). Primary incubation was 1 hour.
Detected by chemiluminescence.