

## UK Office

### Everest Biotech Ltd

Cherwell Innovation Centre  
77 Heyford Park  
Upper Heyford  
Oxfordshire  
OX25 5HD  
UK

Enquiries:

[info@everestbiotech.com](mailto:info@everestbiotech.com)

Sales:

[sales@everestbiotech.com](mailto:sales@everestbiotech.com)

Tech support:

[support@everestbiotech.com](mailto:support@everestbiotech.com)

Tel: +44 (0)1869 238326

[www.everestbiotech.com](http://www.everestbiotech.com)

**Research Use Only. Not for  
diagnostic or therapeutic use.**

## EB06199 - Goat Anti-BTRC / FWD1 Antibody

Size: 100µg specific antibody in 200µl



### Target Protein

**Principal Names:** BTRC, beta-transducin repeat containing, RP11-529I10.2, BETA-TRCP, FBW1A, FBXW1, FBXW1A, FWD1, MGC4643, bTrCP, bTrCP1, betaTrCP, E3RSIkappaB, F-box and WD repeats protein beta-TrCP, F-box and WD-repeat protein 1B, F-box/WD repeat-containing protein 1A, OTTHUMP00000020314, OTTHUMP00000020315, beta-TrCP1, plkappaBalphalpha-E3 receptor subunit

**Official Symbol:** BTRC

**Accession Number(s):** NP\_378663.1; NP\_003930.1; NP\_001243785.1

**Human GeneID(s):** [8945](#)

**Non-Human GeneID(s):** 12234 (mouse), 361765 (rat)

**Important Comments:** This antibody is expected to recognise both reported isoforms (NP\_378663.1; NP\_003930.1).

### Immunogen

Peptide with sequence DPAAEAVLQEKALK-C, from the N Terminus of the protein sequence according to NP\_378663.1; NP\_003930.1; NP\_001243785.1.

Please note the [peptide](#) is available for sale.

### Purification and Storage

Purified from goat serum by ammonium sulphate precipitation followed by antigen affinity chromatography using the immunizing peptide.

Supplied at 0.5 mg/ml in Tris saline, 0.02% sodium azide, pH7.3 with 0.5% bovine serum albumin.

Aliquot and store at -20°C. Minimize freezing and thawing.

### Applications Tested

**Peptide ELISA:** antibody detection limit dilution 1:128000.

**Western blot:** Approx 65kDa band observed in nuclear lysates of cell line HeLa (calculated MW of 65kDa according to NP\_003930.1 and 68.5kDa according to NP\_001243785.1. Recommended concentration: 1-3µg/ml. Primary incubation was 1 hour.

**IHC:** Paraffin embedded Human Heart. Recommended concentration: 7.5µg/ml.

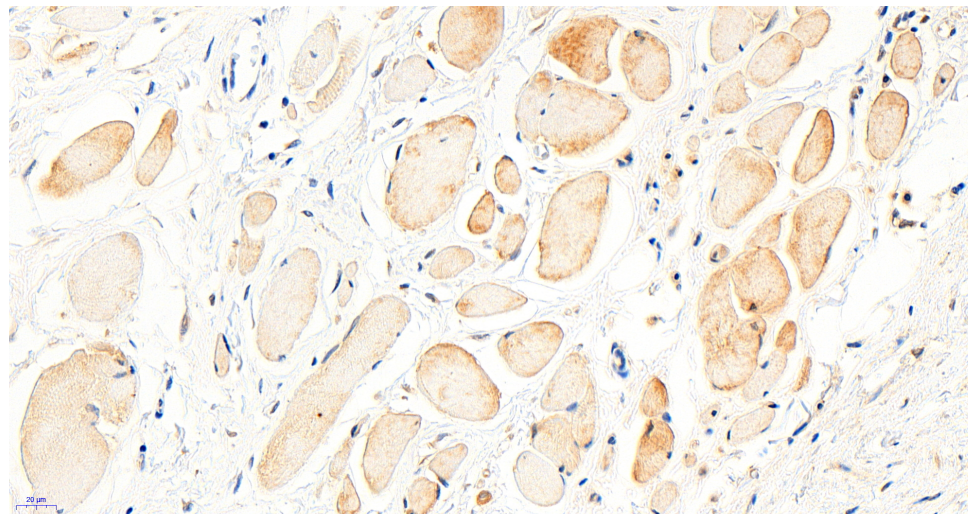
### Species Reactivity

**Tested:** Human

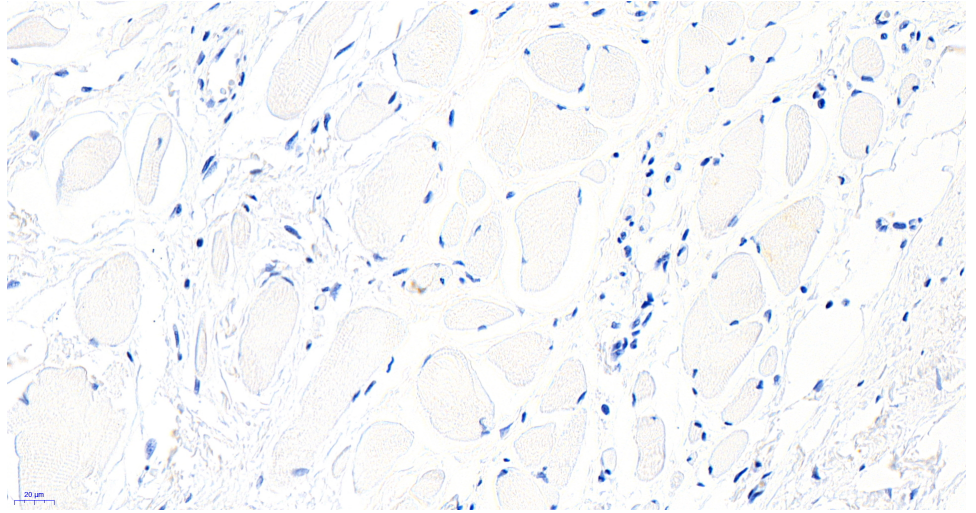
**Expected from sequence similarity:** Human, Mouse, Rat, Pig, Cow



EB06199 (1 $\mu$ g/ml) staining of Nuclear lysates of cell line HeLa (35 $\mu$ g protein in RIPA buffer). Detected by chemiluminescence.



EB06199 (7.5 $\mu$ g/ml) staining of paraffin embedded Human Heart. Heat induced antigen retrieval with citrate buffer pH 6, HRP-staining.



EB06199 Negative Control showing staining of paraffin embedded Human Heart, with no primary antibody.