



International Office

Everest Biotech Ltd

Vector Laboratories, Inc.
6737 Mowry Ave
Newark, CA 94560
United States

Customer Service:

customerservice@vectorlabs.com

Technical Service:

technical@vectorlabs.com

Tel: +1 (800) 227-6666

www.everestbiotech.com

**Research Use Only. Not for
diagnostic or therapeutic use.**

EB07620 - Goat Anti-C14orf169 / NO66 Antibody

Size: 100µg specific antibody in 200µl



Target Protein

Principal Names: C14orf169, NO66, chromosome 14 open reading frame 169, FLJ21802, MAPJD

Official Symbol: RIOX1

Accession Number(s): NP_078920.2

Human GeneID(s): [79697](#)

Non-Human GeneID(s): 71952 (mouse)

Immunogen

Peptide with sequence C-GAQHSDSKDPR, from the internal region of the protein sequence according to NP_078920.2.

Please note the [peptide](#) is available for sale.

Purification and Storage

Purified from goat serum by ammonium sulphate precipitation followed by antigen affinity chromatography using the immunizing peptide.

Supplied at 0.5 mg/ml in Tris saline, 0.02% sodium azide, pH7.3 with 0.5% bovine serum albumin.

Aliquot and store at -20°C. Minimize freezing and thawing.

Applications Tested

Peptide ELISA: antibody detection limit dilution 1:64000.

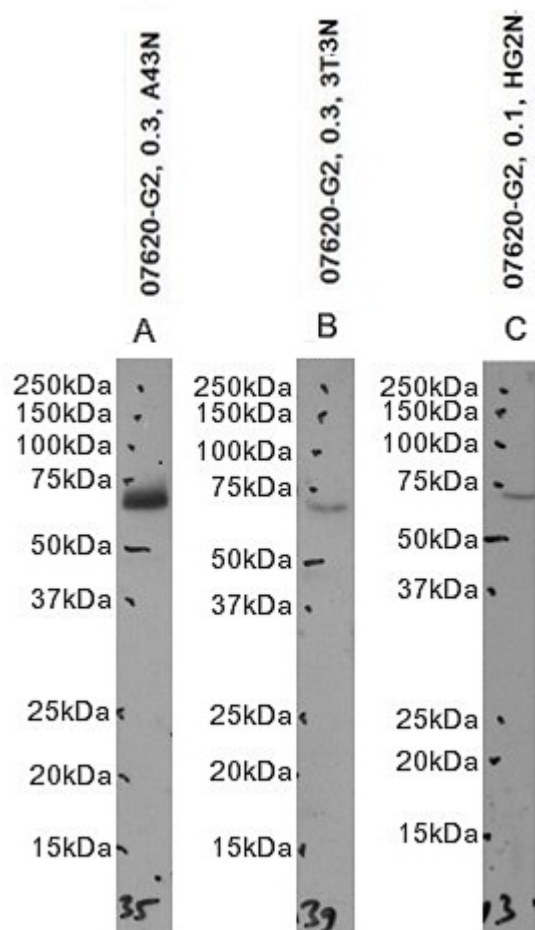
Western blot: Approx. 70kDa band observed in nuclear lysates of cell lines A431, HepG2 and NIH3T3 (calculated MW of 71.1kDa according to Human NP_078920.2 and 67.6kDa according to Mouse NP_076122.2). Recommended concentration: 0.1-0.3µg/ml. Primary incubation 1 hour at room temperature.

Flow Cytometry: Flow cytometric analysis of A431 cells. Recommended concentration: 10ug/ml.

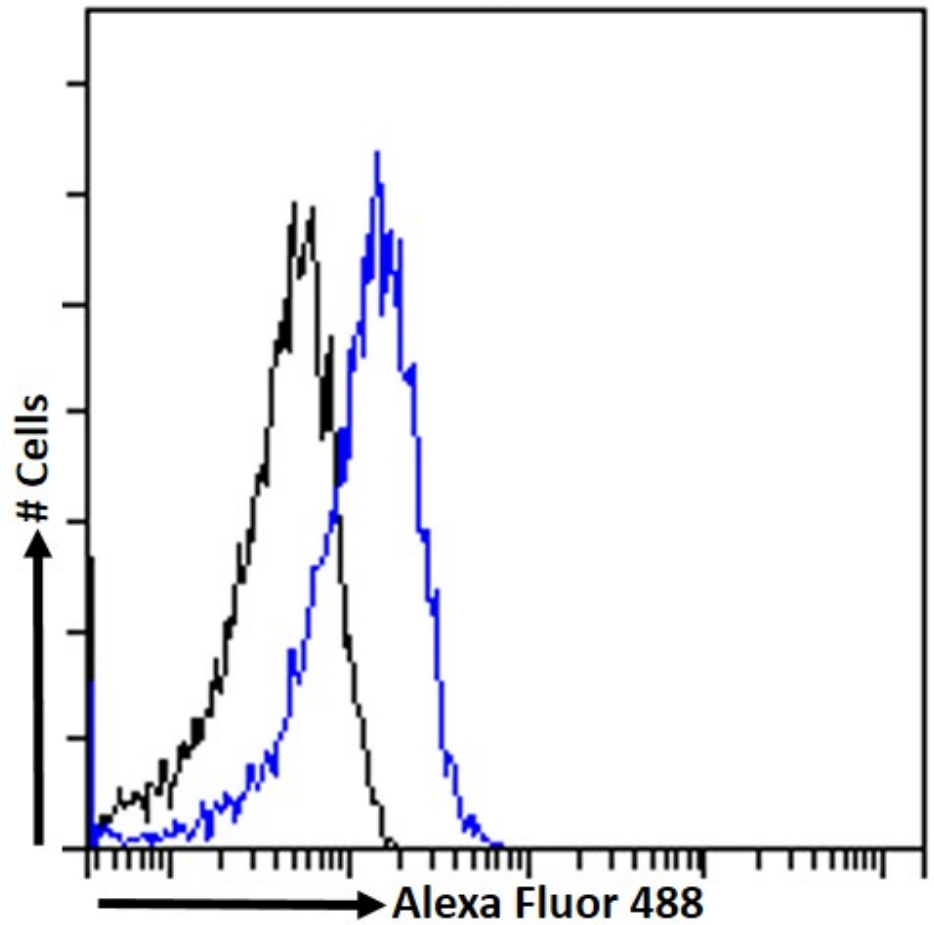
Species Reactivity

Tested: Human, Mouse

Expected from sequence similarity: Human, Mouse, Rat, Cow



EB07620 optimised QC. Primary incubation 1 hour at room temperature.
 Images A, B: A431 and NIH3T3 nuclear cell lysate at primary Ab concentration 0.3 µg/ml.
 Image C: HepG2 nuclear cell lysate at primary Ab concentration 0.1 µg/ml. (Loaded 35 µg protein in RIPA buffer, per lane). Detected by chemiluminescence.



EB07620 Flow cytometric analysis of paraformaldehyde fixed MCF7 cells (blue line), permeabilized with 0.5% Triton. Primary incubation 1hr (10ug/ml) followed by Alexa Fluor 488 secondary antibody (1ug/ml). IgG control: Unimmunized goat IgG (black line) followed by Alexa Fluor 488 secondary antibody.