



## International Office

### Everest Biotech Ltd

Vector Laboratories, Inc.  
6737 Mowry Ave  
Newark, CA 94560  
United States

Customer Service:

[customerservice@vectorlabs.com](mailto:customerservice@vectorlabs.com)

Technical Service:

[technical@vectorlabs.com](mailto:technical@vectorlabs.com)

Tel: +1 (800) 227-6666

[www.everestbiotech.com](http://www.everestbiotech.com)

**Research Use Only. Not for  
diagnostic or therapeutic use.**

## EB07604 - Goat Anti-C14orf68 Antibody

Size: 100µg specific antibody in 200µl



### Target Protein

**Principal Names:** C14orf68, chromosome 14 open reading frame 68, HDMCP, HMFN1655, hepatocellular carcinoma-downregulated mitochondrial carrier protein

**Official Symbol:** C14orf68

**Accession Number(s):** NP\_997000.2

**Human GeneID(s):** [283600](#)

### Immunogen

Peptide with sequence C-RYGNPDAKPTKAD, from the internal region of the protein sequence according to NP\_997000.2.

Please note the [peptide](#) is available for sale.

### Purification and Storage

Purified from goat serum by ammonium sulphate precipitation followed by antigen affinity chromatography using the immunizing peptide.

Supplied at 0.5 mg/ml in Tris saline, 0.02% sodium azide, pH7.3 with 0.5% bovine serum albumin.

Aliquot and store at -20°C. Minimize freezing and thawing.

### Applications Tested

**Peptide ELISA:** antibody detection limit dilution 1:16000.

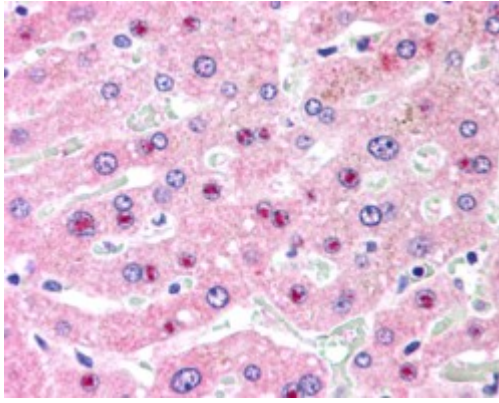
**Western blot:** Preliminary experiments gave an approx 45kDa band in Human Liver lysates after 0.3µg/ml antibody staining. Please note that currently we cannot find an explanation in the literature for the band we observe given the calculated size of 33.4kDa according to NP\_997000.2. The 45kDa band was successfully blocked by incubation with the immunizing peptide. We would appreciate any feedback from people in the field - have any results been reported with other antibodies/lysates? Have any further splice variants/modified forms been reported?

**IHC:** In paraffin embedded Human Liver shows staining of nucleoli in select hepatocytes. Recommended concentration, 2.5µg/ml.

### Species Reactivity

**Tested:** Human

**Expected from sequence similarity:** Human



EB07604 (2.5µg/ml) staining of paraffin embedded Human Liver. Steamed antigen retrieval with citrate buffer pH 6, AP-staining.