



## International Office

### Everest Biotech Ltd

Vector Laboratories, Inc.  
6737 Mowry Ave  
Newark, CA 94560  
United States

Customer Service:

[customerservice@vectorlabs.com](mailto:customerservice@vectorlabs.com)

Technical Service:

[technical@vectorlabs.com](mailto:technical@vectorlabs.com)

Tel: +1 (800) 227-6666

[www.everestbiotech.com](http://www.everestbiotech.com)

**Research Use Only. Not for  
diagnostic or therapeutic use.**

## EB11178 - Goat Anti-CACNB2 (aa565-579)

### Antibody

Size: 100µg specific antibody in 200µl



### Target Protein

**Principal Names:** CAB2, CACNLB2, calcium channel voltage-dependent subunit beta 2, calcium channel, voltage-dependent, beta 2 subunit, CAVB2, FLJ23743, Lambert-Eaton myasthenic syndrome antigen B, myasthenic (Lambert-Eaton) syndrome antigen B, MYSB, voltage-dependent L-type calcium channel subunit beta-2, CACNB2

**Official Symbol:** CACNB2

**Accession Number(s):** NP\_000715.2; NP\_963890.2; NP\_963884.2; NP\_963891.1; NP\_963887.2; NP\_963865.2; NP\_963864.1; NP\_963866.2; NP\_001161417.1

**Human GeneID(s):** [783](#)

**Non-Human GeneID(s):** 12296 (mouse), 116600 (rat)

**Important Comments:** This antibody is expected to recognize all reported isoforms (NP\_000715.2; NP\_963890.2; NP\_963884.2; NP\_963891.1; NP\_963887.2; NP\_963865.2; NP\_963864.1; NP\_963866.2; NP\_001161417.1).

### Immunogen

Peptide with sequence ECNKQRSRHKSKDRY, from the C Terminus of the protein sequence according to NP\_000715.2; NP\_963890.2; NP\_963884.2; NP\_963891.1; NP\_963887.2; NP\_963865.2; NP\_963864.1; NP\_963866.2; NP\_001161417.1.

Please note the [peptide](#) is available for sale.

### Purification and Storage

Purified from goat serum by ammonium sulphate precipitation followed by antigen affinity chromatography using the immunizing peptide.

Supplied at 0.5 mg/ml in Tris saline, 0.02% sodium azide, pH7.3 with 0.5% bovine serum albumin.

Aliquot and store at -20°C. Minimize freezing and thawing.

### Applications Tested

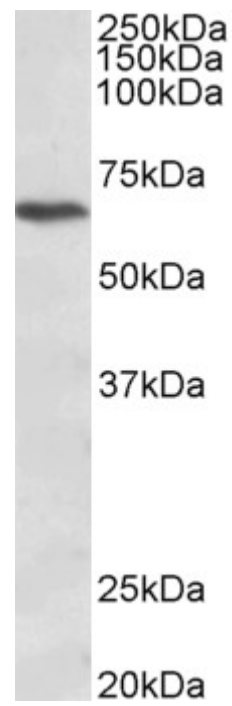
**Peptide ELISA:** antibody detection limit dilution 1:4000.

**Western blot:** Approx 65kDa band observed in lysates of cell lines NIH3T3 and Jurkat (calculated MW of 68.1kDa according to NP\_000715.2). Recommended concentration: 1-3µg/ml.

### Species Reactivity

**Tested:** Human, Mouse

**Expected from sequence similarity:** Human, Mouse, Rat, Dog, Cow



EB11178 (1 $\mu$ g/ml) staining of Jurkat lysate (35 $\mu$ g protein in RIPA buffer). Primary incubation was 1 hour.  
Detected by chemiluminescence.