



International Office

Everest Biotech Ltd

Vector Laboratories, Inc.
6737 Mowry Ave
Newark, CA 94560
United States

Customer Service:

customerservice@vectorlabs.com

Technical Service:

technical@vectorlabs.com

Tel: +1 (800) 227-6666

www.everestbiotech.com

**Research Use Only. Not for
diagnostic or therapeutic use.**

EB09418 - Goat Anti-CAD / CPS2 Antibody

Size: 100µg specific antibody in 200µl



Target Protein

Principal Names: CAD, carbamoyl-phosphate synthetase 2, aspartate transcarbamylase, and dihydroorotase, CAD trifunctional protein, carbamoylphosphate synthetase 2/aspartate transcarbamylase/dihydroorotase, multifunctional protein CAD

Official Symbol: CAD

Accession Number(s): NP_004332.2

Human GeneID(s): [790](#)

Non-Human GeneID(s): 69719 (mouse), 24240 (rat)

Immunogen

Peptide with sequence C-DTRELTKKLREQ, from the internal region of the protein sequence according to NP_004332.2.

Please note the [peptide](#) is available for sale.

Purification and Storage

Purified from goat serum by ammonium sulphate precipitation followed by antigen affinity chromatography using the immunizing peptide.

Supplied at 0.5 mg/ml in Tris saline, 0.02% sodium azide, pH7.3 with 0.5% bovine serum albumin.

Aliquot and store at -20°C. Minimize freezing and thawing.

Applications Tested

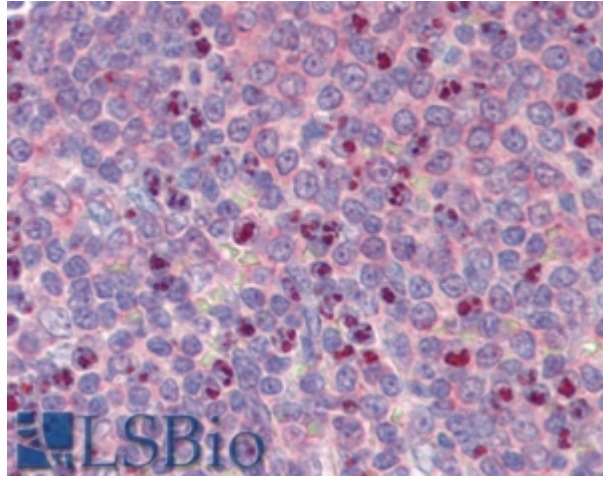
Peptide ELISA: antibody detection limit dilution 1:32000.

IHC: In paraffin embedded Human Spleen shows nuclear staining in selected cells. Recommended concentration, 5-15µg/ml.

Species Reactivity

Tested: Human

Expected from sequence similarity: Human, Mouse, Rat



EB09418 (5µg/ml) staining of paraffin embedded Human Spleen. Steamed antigen retrieval with citrate buffer pH 6, AP-staining.