



UK Office

Everest Biotech Ltd

Cherwell Innovation Centre
77 Heyford Park
Upper Heyford
Oxfordshire
OX25 5HD
UK

Enquiries:

info@everestbiotech.com

Sales:

sales@everestbiotech.com

Tech support:

support@everestbiotech.com

Tel: +44 (0)1869 238326

Fax: +44 (0)1869 238327

US Office

Everest Biotech c/o Abcore

405 Maple Street, Suite A106
Ramona,
CA 92065
USA

Inquiries:

info@everestbiotech.com

Sales:

usasales@everestbiotech.com

Tech support:

support@everestbiotech.com

Tel: 888-320-4628 (toll-free)

Fax: 888-841-9041

www.everestbiotech.com

**Research Use Only. Not for
diagnostic or therapeutic use.**

EB10246 - Goat Anti-CADM1 Antibody

Size: 100µg specific antibody in 200µl



Target Protein

Principal Names: BL2, cell adhesion molecule 1, DKFZp686F1789, IGSF4, IGSF4A, MGC149785, MGC51880, NECL2, Nect-2, RA175, sglGSF, ST17, SYNCAM, synCAM1, TSLC1, TSLC1/Nectin-like 2/IGSF4, CADM1

Official Symbol: CADM1

Accession Number(s): NP_055148.3; NP_001091987.1

Human GeneID(s): [23705](#)

Non-Human GeneID(s): 54725 (mouse), 363058 (rat)

Important Comments: This antibody is expected to recognize both reported isoforms (NP_055148.3; NP_001091987.1).

Immunogen

Peptide with sequence C-NLQTQRYLEVQ, from the internal region of the protein sequence according to NP_055148.3; NP_001091987.1.

Please note the [peptide](#) is available for sale.

Purification and Storage

Purified from goat serum by ammonium sulphate precipitation followed by antigen affinity chromatography using the immunizing peptide.

Supplied at 0.5 mg/ml in Tris saline, 0.02% sodium azide, pH7.3 with 0.5% bovine serum albumin.

Aliquot and store at -20°C. Minimize freezing and thawing.

Applications Tested

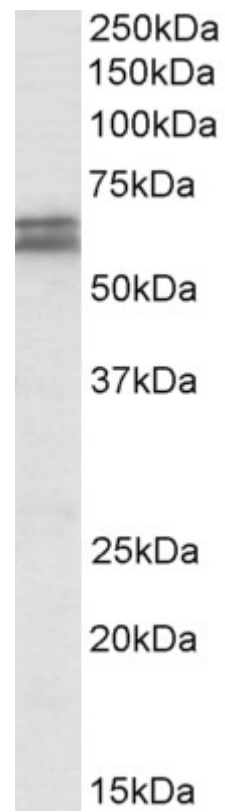
Peptide ELISA: antibody detection limit dilution 1:128000.

Western blot: Approx 60-65kDa double band observed in Human Colorectal cancer lysates (calculated MW of 48.5kDa according to NP_055148.3). The observed sizes correspond to glycosylated forms. Recommended concentration: 1-3µg/ml.

Species Reactivity

Tested: Human

Expected from sequence similarity: Human, Mouse, Rat, Dog, Cow



EB10246 (1µg/ml) staining of Human Colorectal cancer lysate (35µg protein in RIPA buffer). Primary incubation was 1 hour. Detected by chemiluminescence.