

International Office

Everest Biotech Ltd

Vector Laboratories, Inc.
6737 Mowry Ave
Newark, CA 94560
United States

Customer Service:

customerservice@vectorlabs.com

Technical Service:

technical@vectorlabs.com

Tel: +1 (800) 227-6666

www.everestbiotech.com

**Research Use Only. Not for
diagnostic or therapeutic use.**

EB11250 - Goat Anti-CADM1/TSLC1 Antibody

Size: 100µg specific antibody in 200µl



Target Protein

Principal Names: BL2, cell adhesion molecule 1, DKFZp686F1789, IGSF4, IGSF4A, immunoglobulin superfamily member 4, immunoglobulin superfamily, member 4, immunoglobulin superfamily, member 4D variant 2, MGC149785, MGC51880, NECL2, Necl-2, nectin-like 2, nectin-like protein 2, RA175, sglGSF, spermatogenic immunoglobulin superfamily, ST17, sTSLC-1, synaptic cell adhesion molecule, SYNCAM, synCAM1, TSLC1, TSLC-1, TSLC1/Nectin-like 2/IGSF4, tumor suppressor in lung cancer 1, CADM1

Official Symbol: CADM1

Accession Number(s): NP_055148.3; NP_001091987.1

Human GeneID(s): [23705](#)

Non-Human GeneID(s): 54725 (mouse), 363058 (rat)

Important Comments: This antibody is expected to recognize both reported isoforms (NP_055148.3; NP_001091987.1).

Immunogen

Peptide with sequence C-QLYTDPPEQESYTT, from the internal region of the protein sequence according to NP_055148.3; NP_001091987.1.

Please note the [peptide](#) is available for sale.

Purification and Storage

Purified from goat serum by ammonium sulphate precipitation followed by antigen affinity chromatography using the immunizing peptide.

Supplied at 0.5 mg/ml in Tris saline, 0.02% sodium azide, pH7.3 with 0.5% bovine serum albumin.

Aliquot and store at -20°C. Minimize freezing and thawing.

Applications Tested

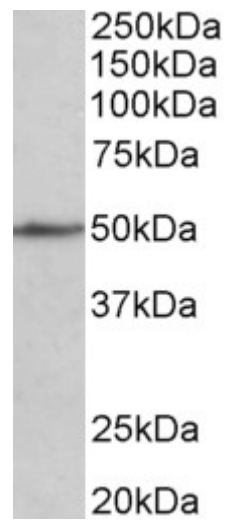
Peptide ELISA: antibody detection limit dilution 1:8000.

Western blot: Approx 49kDa band observed in Mouse fetal Heart and fetal Brain lysates (calculated MW of 49.8kDa according to Mouse NP_997558.2). Recommended concentration: 1-3µg/ml.

Species Reactivity

Tested: Mouse

Expected from sequence similarity: Human, Mouse, Rat, Dog, Pig, Cow



EB11250 (1 μ g/ml) staining of Mouse fetal Heart lysate (35 μ g protein in RIPA buffer). Primary incubation was 1 hour. Detected by chemiluminescence.