

## UK Office

### Everest Biotech Ltd

Cherwell Innovation Centre  
77 Heyford Park  
Upper Heyford  
Oxfordshire  
OX25 5HD  
UK

Enquiries:

[info@everestbiotech.com](mailto:info@everestbiotech.com)

Sales:

[sales@everestbiotech.com](mailto:sales@everestbiotech.com)

Tech support:

[support@everestbiotech.com](mailto:support@everestbiotech.com)

Tel: +44 (0)1869 238326

Fax: +44 (0)1869 238327

## US Office

### Everest Biotech c/o Abcore

405 Maple Street, Suite A106  
Ramona,  
CA 92065  
USA

Inquiries:

[info@everestbiotech.com](mailto:info@everestbiotech.com)

Sales:

[usasales@everestbiotech.com](mailto:usasales@everestbiotech.com)

Tech support:

[support@everestbiotech.com](mailto:support@everestbiotech.com)

Tel: 888-320-4628 (toll-free)

Fax: 888-841-9041

[www.everestbiotech.com](http://www.everestbiotech.com)

**Research Use Only. Not for  
diagnostic or therapeutic use.**

## EB11250 - Goat Anti-CADM1/TSLC1 Antibody

Size: 100µg specific antibody in 200µl



### Target Protein

**Principal Names:** BL2, cell adhesion molecule 1, DKFZp686F1789, IGSF4, IGSF4A, immunoglobulin superfamily member 4, immunoglobulin superfamily, member 4, immunoglobulin superfamily, member 4D variant 2, MGC149785, MGC51880, NECL2, Necl-2, nectin-like 2, nectin-like protein 2, RA175, sglGSF, spermatogenic immunoglobulin superfamily, ST17, sTSLC-1, synaptic cell adhesion molecule, SYNCAM, synCAM1, TSLC1, TSLC-1, TSLC1/Nectin-like 2/IGSF4, tumor suppressor in lung cancer 1, CADM1

**Official Symbol:** CADM1

**Accession Number(s):** NP\_055148.3; NP\_001091987.1

**Human GeneID(s):** [23705](#)

**Non-Human GeneID(s):** 54725 (mouse), 363058 (rat)

**Important Comments:** This antibody is expected to recognize both reported isoforms (NP\_055148.3; NP\_001091987.1).

### Immunogen

Peptide with sequence C-QLYTDPPQESYTT, from the internal region of the protein sequence according to NP\_055148.3; NP\_001091987.1.

Please note the [peptide](#) is available for sale.

### Purification and Storage

Purified from goat serum by ammonium sulphate precipitation followed by antigen affinity chromatography using the immunizing peptide.

Supplied at 0.5 mg/ml in Tris saline, 0.02% sodium azide, pH7.3 with 0.5% bovine serum albumin.

Aliquot and store at -20°C. Minimize freezing and thawing.

### Applications Tested

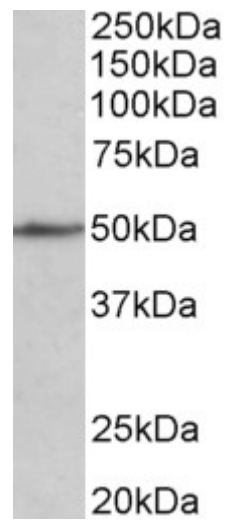
**Peptide ELISA:** antibody detection limit dilution 1:8000.

**Western blot:** Approx 49kDa band observed in Mouse fetal Heart and fetal Brain lysates (calculated MW of 49.8kDa according to Mouse NP\_997558.2). Recommended concentration: 1-3µg/ml.

### Species Reactivity

**Tested:** Mouse

**Expected from sequence similarity:** Human, Mouse, Rat, Dog, Pig, Cow



EB11250 (1 $\mu$ g/ml) staining of Mouse fetal Heart lysate (35 $\mu$ g protein in RIPA buffer). Primary incubation was 1 hour. Detected by chemiluminescence.