

International Office

Everest Biotech Ltd

Vector Laboratories, Inc.
6737 Mowry Ave
Newark, CA 94560
United States

Customer Service:

customerservice@vectorlabs.com

Technical Service:

technical@vectorlabs.com

Tel: +1 (800) 227-6666

www.everestbiotech.com

**Research Use Only. Not for
diagnostic or therapeutic use.**

EB11759 - Goat Anti-calbindin D28 Antibody

Size: 100µg specific antibody in 200µl



Target Protein

Principal Names: CALB, CALB1, calbindin, calbindin 1, (28kD), calbindin 1, 28kDa, calbindin D28, D-28K, OTTHUMP00000166027, OTTHUMP00000225441, RTVL-H protein, vitamin D-dependent calcium-binding protein, avian-type

Official Symbol: CALB1

Accession Number(s): NP_004920.1

Human GeneID(s): [793](#)

Non-Human GeneID(s): 83839 (rat)

Important Comments: Immunizing peptide overlaps EF hand 2, but not any calcium binding site.

Immunogen

Peptide with sequence C-KTFVDQYGQRDDGK, from the internal region of the protein sequence according to NP_004920.1.

Please note the [peptide](#) is available for sale.

Purification and Storage

Purified from goat serum by ammonium sulphate precipitation followed by antigen affinity chromatography using the immunizing peptide.

Supplied at 0.5 mg/ml in Tris saline, 0.02% sodium azide, pH7.3 with 0.5% bovine serum albumin.

Aliquot and store at -20°C. Minimize freezing and thawing.

Applications Tested

Peptide ELISA: antibody detection limit dilution 1:128000.

Western blot: Approx. 26kDa band observed in Human and Rat Kidney lysates and in Rat Brain lysates (calculated MW of 30.0kDa according to Human NP_004920.1 and Rat NP_114190.1). The observed molecular weight is routinely observed by other sources. Recommended concentration: 0.1-0.3µg/ml. Primary incubation 1 hour at room temperature.

IHC: Paraffin embedded Human Kidney. Recommended concentration: 5-7µg/ml.

Species Reactivity

Tested: Human, Rat

Expected from sequence similarity: Human, Rat, Dog, Pig, Cow

Specific Reference

This antibody (previous batch) has been successfully used in the following paper:

Azad, Tanzina

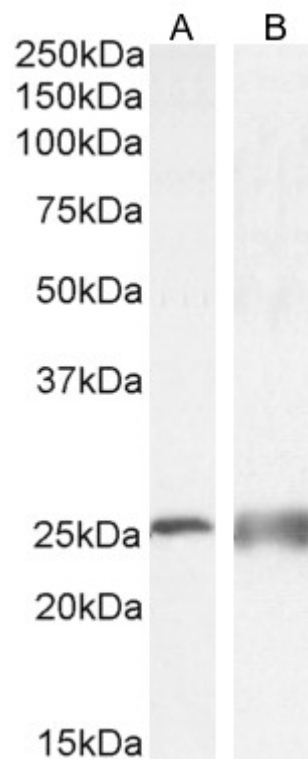
Comparative Renal Development between Spiny Mouse (*Acomys cahirinus*) and House Mouse (*Mus musculus*)

<http://hdl.handle.net/10138/594531> (2025)

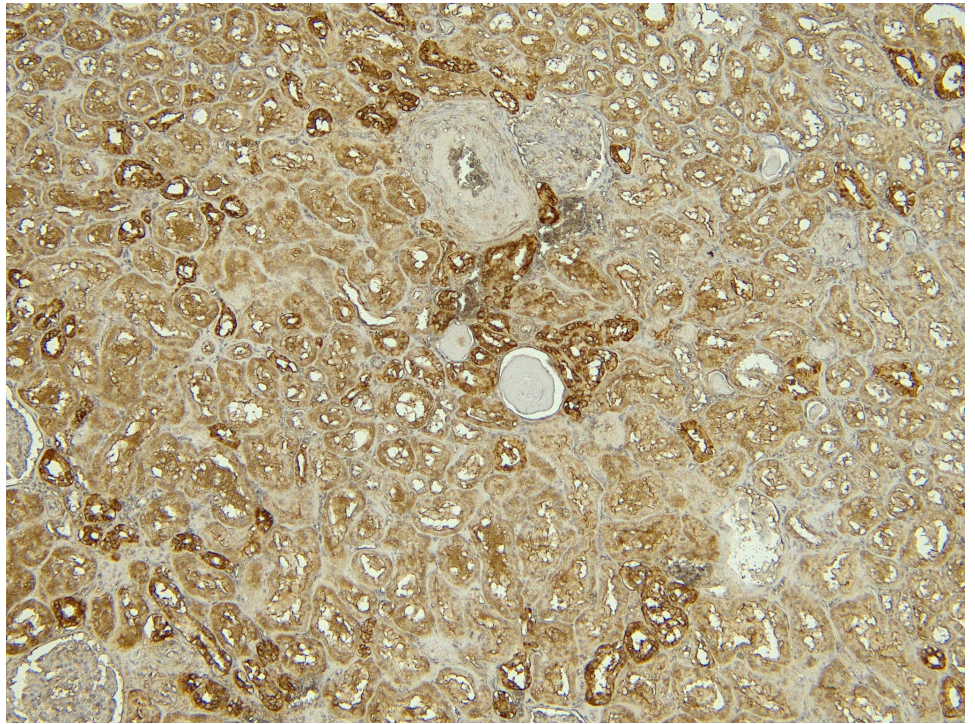
PMID: 0



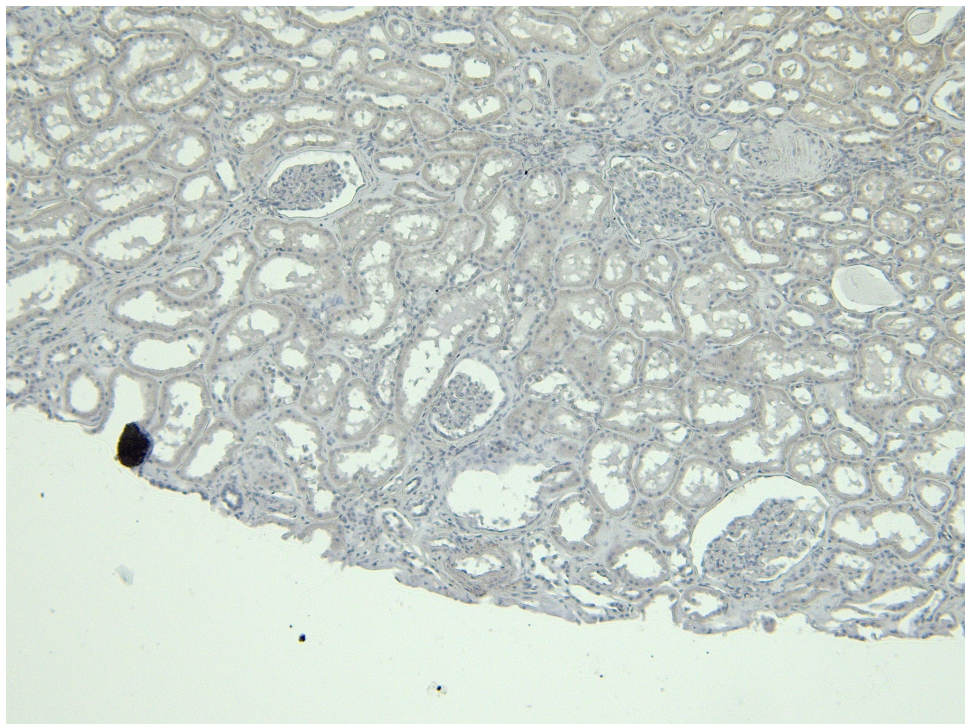
EB11759 (0.3 μ g/ml) staining of Human Kidney lysate, (35 μ g protein in RIPA buffer). Detected by chemiluminescence.



EB11759 (0.3 μ g/ml) staining of Rat Brain (A) and (0.1 μ g/ml) Kidney (B) lysate, (35 μ g protein in RIPA buffer). Detected by chemiluminescence.



EB11759 (5 μ g/ml) staining of paraffin embedded Human Kidney. Heat induced antigen retrieval with citrate buffer pH 6, HRP-staining.



EB11759 Negative Control showing staining of paraffin embedded Human Kidney, with no primary antibody.