



UK Office

Everest Biotech Ltd

Cherwell Innovation Centre
77 Heyford Park
Upper Heyford
Oxfordshire
OX25 5HD
UK

Enquiries:

info@everestbiotech.com

Sales:

sales@everestbiotech.com

Tech support:

support@everestbiotech.com

Tel: +44 (0)1869 238326

Fax: +44 (0)1869 238327

US Office

Everest Biotech c/o Abcore

405 Maple Street, Suite A106
Ramona,
CA 92065
USA

Inquiries:

info@everestbiotech.com

Sales:

usasales@everestbiotech.com

Tech support:

support@everestbiotech.com

Tel: 888-320-4628 (toll-free)

Fax: 888-841-9041

www.everestbiotech.com

**Research Use Only. Not for
diagnostic or therapeutic use.**

EB09568 - Goat Anti-Calponin 2 / CNN2 Antibody

Size: 100µg specific antibody in 200µl



Target Protein

Principal Names: CNN2, calponin 2, calponin H2, smooth muscle, neutral calponin

Official Symbol: CNN2

Accession Number(s): NP_004359.1; NP_958434.1

Human GeneID(s): [1265](#)

Important Comments: This antibody is expected to recognize both reported isoforms (NP_004359.1; NP_958434.1), but it is not expected to cross-react with CCN3.

Immunogen

Peptide with sequence C-DPGEVPEYPPYYQEE, from the internal region (near C Terminus) of the protein sequence according to NP_004359.1; NP_958434.1.

Please note the [peptide](#) is available for sale.

Purification and Storage

Purified from goat serum by ammonium sulphate precipitation followed by antigen affinity chromatography using the immunizing peptide.

Supplied at 0.5 mg/ml in Tris saline, 0.02% sodium azide, pH7.3 with 0.5% bovine serum albumin.

Aliquot and store at -20°C. Minimize freezing and thawing.

Applications Tested

Peptide ELISA: antibody detection limit dilution 1:32000.

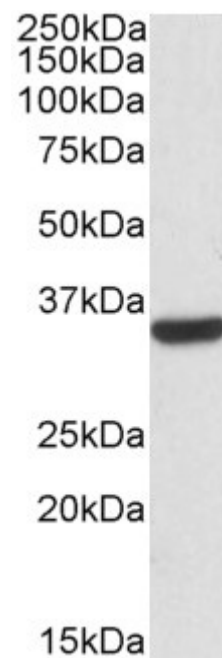
Western blot: Approx 35kDa band observed in lysates of cell line HepG2 (calculated MW of 33.7kDa according to NP_004359.1). Recommended concentration: 0.03-0.1µg/ml. Primary incubation was 1 hour.

IHC: Paraffin embedded Human Placenta. Recommended concentration: 2.5µg/ml.

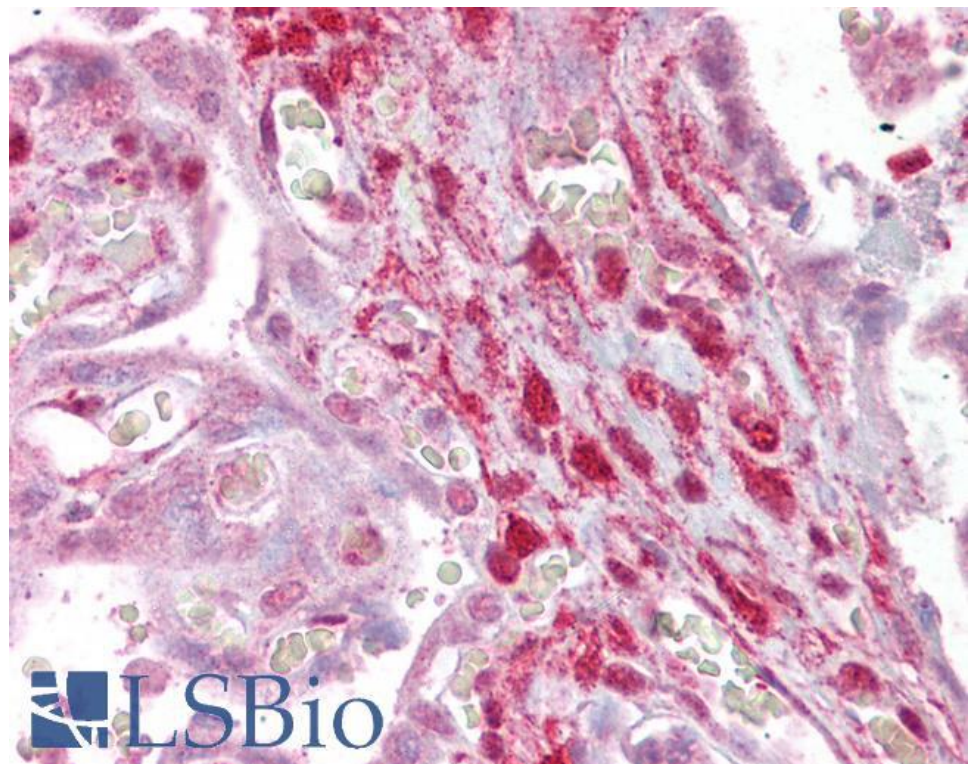
Species Reactivity

Tested: Human

Expected from sequence similarity: Human



EB09568 (0.03 μ g/ml) staining of HepG2 lysates (35 μ g protein in RIPA buffer). Detected by chemiluminescence.



EB09568 (2.5 μ g/ml) staining of paraffin embedded Human Placenta. Steamed antigen retrieval with citrate buffer pH 6, AP-staining.