

UK Office

Everest Biotech Ltd

Cherwell Innovation Centre
77 Heyford Park
Upper Heyford
Oxfordshire
OX25 5HD
UK

Enquiries:

info@everestbiotech.com

Sales:

sales@everestbiotech.com

Tech support:

support@everestbiotech.com

Tel: +44 (0)1869 238326

www.everestbiotech.com

**Research Use Only. Not for
diagnostic or therapeutic use.**

EB05310-T - Goat Anti-Annexin A2 Antibody - Trial

Size: 20µg specific antibody in 40µl



Target Protein

Principal Names: ANXA2, annexin A2, ANX2, LIP2, LPC2, CAL1H, LPC2D, ANX2L4, P36, PAP-IV, annexin II, lipocortin II, Annexin II (lipocortin I), annexin II (lipocortin II), calpactin I, heavy polypeptide (p36), annexin II (lipocortin II calpactin I, heavy polypeptide), calpactin I heavy polypeptide, chromobindin 8, lipocortin II, placental anticoagulant protein IV, HEL-S-270

Official Symbol: ANXA2

Accession Number(s): NP_001002858.1; NP_004030.1

Human GeneID(s): [302](#)

Non-Human GeneID(s): 12306 (mouse), 56611 (rat)

Important Comments: This antibody is expected to recognise both reported isoforms (NP_001002858.1; NP_004030.1). Variants NP_004030.1, NP_001002857.1 and NP_001129487.1 represent identical protein.

Immunogen

Peptide with sequence STVHEILCKLSLEGD, from the N Terminus of the protein sequence according to NP_001002858.1; NP_004030.1.

Please note the [peptide](#) is available for sale.

Purification and Storage

Purified from goat serum by ammonium sulphate precipitation followed by antigen affinity chromatography using the immunizing peptide.

Supplied at 0.5 mg/ml in Tris saline, 0.02% sodium azide, pH7.3 with 0.5% bovine serum albumin.

Aliquot and store at -20°C. Minimize freezing and thawing.

Applications Tested

Peptide ELISA: antibody detection limit dilution 1:1000.

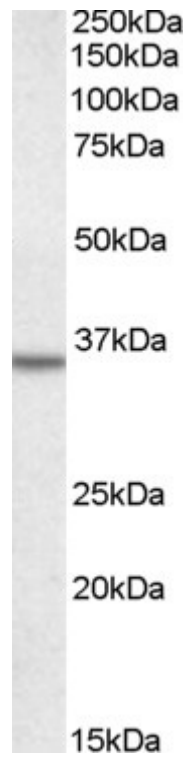
Western blot: Approx 35kDa band observed in lysates of cell lines A549, HeLa and NIH3T3 (calculated MW of 38.6kDa according to NP_004030.1 and NP_001002858.1).

Recommended concentration: 0.5-3µg/ml. Primary incubation was for 1 hour.

Species Reactivity

Tested: Human, Mouse

Expected from sequence similarity: Human, Mouse, Rat, Cow, Pig



EB05310 staining (0.5 μ g/ml) of A431 lysate (RIPA buffer, 35 μ g total protein per lane). Detected by chemiluminescence.