

## UK Office

### Everest Biotech Ltd

Cherwell Innovation Centre  
77 Heyford Park  
Upper Heyford  
Oxfordshire  
OX25 5HD  
UK

Enquiries:

[info@everestbiotech.com](mailto:info@everestbiotech.com)

Sales:

[sales@everestbiotech.com](mailto:sales@everestbiotech.com)

Tech support:

[support@everestbiotech.com](mailto:support@everestbiotech.com)

Tel: +44 (0)1869 238326

[www.everestbiotech.com](http://www.everestbiotech.com)

**Research Use Only. Not for  
diagnostic or therapeutic use.**

## EB05310 - Goat Anti-Annexin A2 Antibody

Size: 100µg specific antibody in 200µl



### Target Protein

**Principal Names:** ANXA2, annexin A2, ANX2, LIP2, LPC2, CAL1H, LPC2D, ANX2L4, P36, PAP-IV, annexin II, lipocortin II, Annexin II (lipocortin I), annexin II (lipocortin II), calpactin I, heavy polypeptide (p36), annexin II (lipocortin II calpactin I, heavy polypeptide), calpactin I heavy polypeptide, chromobindin 8, lipocortin II, placental anticoagulant protein IV, HEL-S-270

**Official Symbol:** ANXA2

**Accession Number(s):** NP\_001002858.1; NP\_004030.1

**Human GeneID(s):** [302](#)

**Non-Human GeneID(s):** 12306 (mouse), 56611 (rat)

**Important Comments:** This antibody is expected to recognise both reported isoforms (NP\_001002858.1; NP\_004030.1). Variants NP\_004030.1, NP\_001002857.1 and NP\_001129487.1 represent identical protein.

### Immunogen

Peptide with sequence STVHEILCKLSLEGD, from the N Terminus of the protein sequence according to NP\_001002858.1; NP\_004030.1.

Please note the [peptide](#) is available for sale.

### Purification and Storage

Purified from goat serum by ammonium sulphate precipitation followed by antigen affinity chromatography using the immunizing peptide.

Supplied at 0.5 mg/ml in Tris saline, 0.02% sodium azide, pH7.3 with 0.5% bovine serum albumin.

Aliquot and store at -20°C. Minimize freezing and thawing.

### Applications Tested

**Peptide ELISA:** antibody detection limit dilution 1:1000.

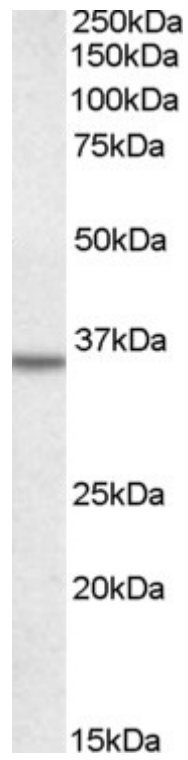
**Western blot:** Approx 35kDa band observed in lysates of cell lines A549, HeLa and NIH3T3 (calculated MW of 38.6kDa according to NP\_004030.1 and NP\_001002858.1).

Recommended concentration: 0.5-3µg/ml. Primary incubation was for 1 hour.

### Species Reactivity

**Tested:** Human, Mouse

**Expected from sequence similarity:** Human, Mouse, Rat, Cow, Pig



EB05310 staining (0.5 $\mu$ g/ml) of A431 lysate (RIPA buffer, 35 $\mu$ g total protein per lane). Detected by chemiluminescence.