



UK Office

Everest Biotech Ltd

Cherwell Innovation Centre
77 Heyford Park
Upper Heyford
Oxfordshire
OX25 5HD
UK

Enquiries:

info@everestbiotech.com

Sales:

sales@everestbiotech.com

Tech support:

support@everestbiotech.com

Tel: +44 (0)1869 238326

Fax: +44 (0)1869 238327

US Office

Everest Biotech c/o Abcore

405 Maple Street, Suite A106
Ramona,
CA 92065
USA

Inquiries:

info@everestbiotech.com

Sales:

usasales@everestbiotech.com

Tech support:

support@everestbiotech.com

Tel: 888-320-4628 (toll-free)

Fax: 888-841-9041

www.everestbiotech.com

**Research Use Only. Not for
diagnostic or therapeutic use.**

EB06945 - Goat Anti-Cannabinoid Receptor 1 Antibody

Size: 100µg specific antibody in 200µl



Target Protein

Principal Names: cannabinoid receptor 1 (brain), CNR1, HGNC:2159, CANN6, CB-R, CB1, CB1A, CB1K5, CNR, central cannabinoid receptor, RP1-23D17.1, CB1R, OTTHUMP00000016838, OTTHUMP00000016839, cannabinoid receptor 1

Official Symbol: CNR1

Accession Number(s): NP_057167.2; NP_001153732.1; NP_001153731.1; NP_001153730.1; NP_001153698.1; NP_149421.1

Human GeneID(s): [1268](#)

Non-Human GeneID(s): 12801 (mouse), 25248 (rat)

Important Comments: This antibody is expected to recognise both reported isoforms. Isoform a (NP_057167.2; NP_001153732.1; NP_001153731.1; NP_001153730.1; NP_001153698.1) and isoform b (NP_149421.1).

Immunogen

Peptide with sequence C-HTSEDKVQVTRPDQ, from the internal region of the protein sequence according to NP_057167.2; NP_001153732.1; NP_001153731.1; NP_001153730.1; NP_001153698.1; NP_149421.1.

Please note the [peptide](#) is available for sale.

Purification and Storage

Purified from goat serum by ammonium sulphate precipitation followed by antigen affinity chromatography using the immunizing peptide.

Supplied at 0.5 mg/ml in Tris saline, 0.02% sodium azide, pH7.3 with 0.5% bovine serum albumin.

Aliquot and store at -20°C. Minimize freezing and thawing.

Applications Tested

Peptide ELISA: antibody detection limit dilution 1:32000.

Western blot: Approx 55kDa (non-glycosylated) and 65kDa (glycosylated) bands observed in lysates of cell line HeLa (calculated MW of 52.9kDa according to NP_057167.2;). Both bands were successfully blocked by incubation with the immunizing peptide, Recommended concentration: 0.5-2µg/ml. Primary incubation 1 hour at room temperature.

This antibody has been successfully used in Western blot on Human: Fügedi G et al. (2014) PMID: 25444073.

Species Reactivity

Tested: Human

Expected from sequence similarity: Human, Mouse, Rat, Dog

Specific Reference

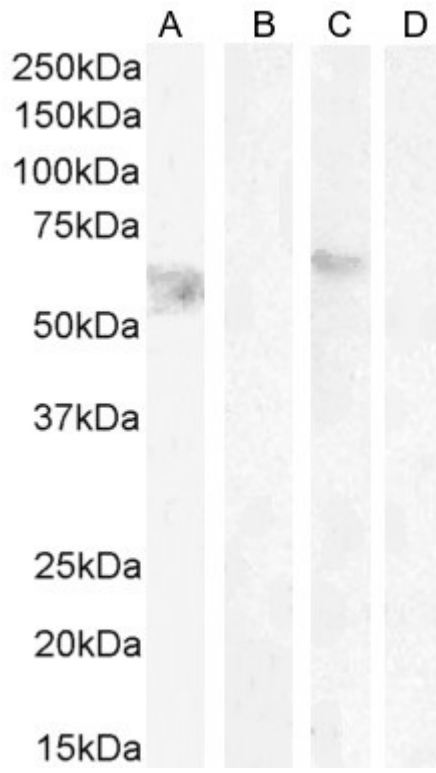
This antibody has been successfully used in Western blot on Human:

Fügedi G, Molnár M, Rigó J Jr, Schönleber J, Kovalszky I, Molvarec A.

Increased placental expression of cannabinoid receptor 1 in preeclampsia: an observational study.

BMC Pregnancy Childbirth. 2014 Dec 2;14:395

PMID: 25444073



EB06945 (1 μ g/ml) staining of HeLa lysate non-glycosylated (A) + peptide (B) and (0.5 μ g/ml) HeLa lysate glycosylated (C) + peptide (D), (35 μ g protein in RIPA buffer). Detected by chemiluminescence.