



## UK Office

### Everest Biotech Ltd

Cherwell Innovation Centre  
77 Heyford Park  
Upper Heyford  
Oxfordshire  
OX25 5HD  
UK

Enquiries:

[info@everestbiotech.com](mailto:info@everestbiotech.com)

Sales:

[sales@everestbiotech.com](mailto:sales@everestbiotech.com)

Tech support:

[support@everestbiotech.com](mailto:support@everestbiotech.com)

Tel: +44 (0)1869 238326

[www.everestbiotech.com](http://www.everestbiotech.com)

**Research Use Only. Not for  
diagnostic or therapeutic use.**

## EB06946 - Goat Anti-Cannabinoid Receptor 2 Antibody

Size: 100µg specific antibody in 200µl



### Target Protein

**Principal Names:** cannabinoid receptor 2 (macrophage), HGNC:2160, CNR3, CB2, CX5, OTTHUMP00000044841, CNR2, RP11-4M23.1, testis-dominant CNR2 isoform CB2

**Official Symbol:** CNR2

**Accession Number(s):** NP\_001832.1

**Human GeneID(s):** [1269](#)

### Immunogen

Peptide with sequence C-TETEADGKITPYPD, from the C Terminus of the protein sequence according to NP\_001832.1.

Please note the [peptide](#) is available for sale.

### Purification and Storage

Purified from goat serum by ammonium sulphate precipitation followed by antigen affinity chromatography using the immunizing peptide.

Supplied at 0.5 mg/ml in Tris saline, 0.02% sodium azide, pH7.3 with 0.5% bovine serum albumin.

Aliquot and store at -20°C. Minimize freezing and thawing.

### Applications Tested

**Peptide ELISA:** antibody detection limit dilution 1:32000.

**Western blot:** Approx. 40-45kDa doublet band observed in Human Hippocampus lysates, approx. 48kDa in Human Cerebellum lysates, and approx. 50kDa in Human Duodenum lysates (calculated MW of 46.2kDa according to NP\_001832.1). Recommended concentration: 1-3µg/ml. Primary incubation 1 hour at room temperature.

**IHC:** Paraffin embedded Human Tonsil. Recommended concentration: 4µg/ml.

### Species Reactivity

**Tested:** Human

**Expected from sequence similarity:** Human

### Specific Reference

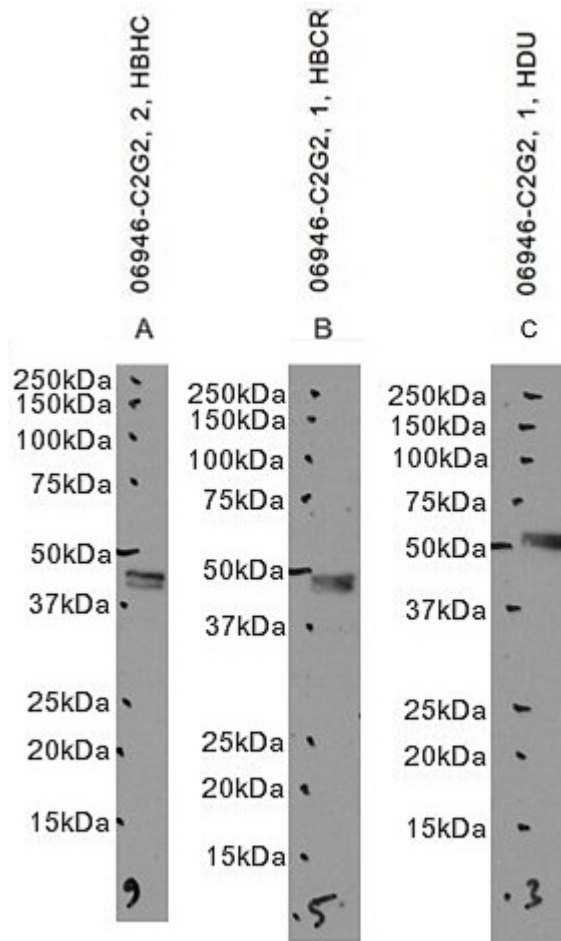
**This antibody (previous batch) has been successfully used in Western blot on Human:**

Fügedi G, Molnár M, Rigó J Jr, Schönleber J, Kovalszky I, Molvarec A.

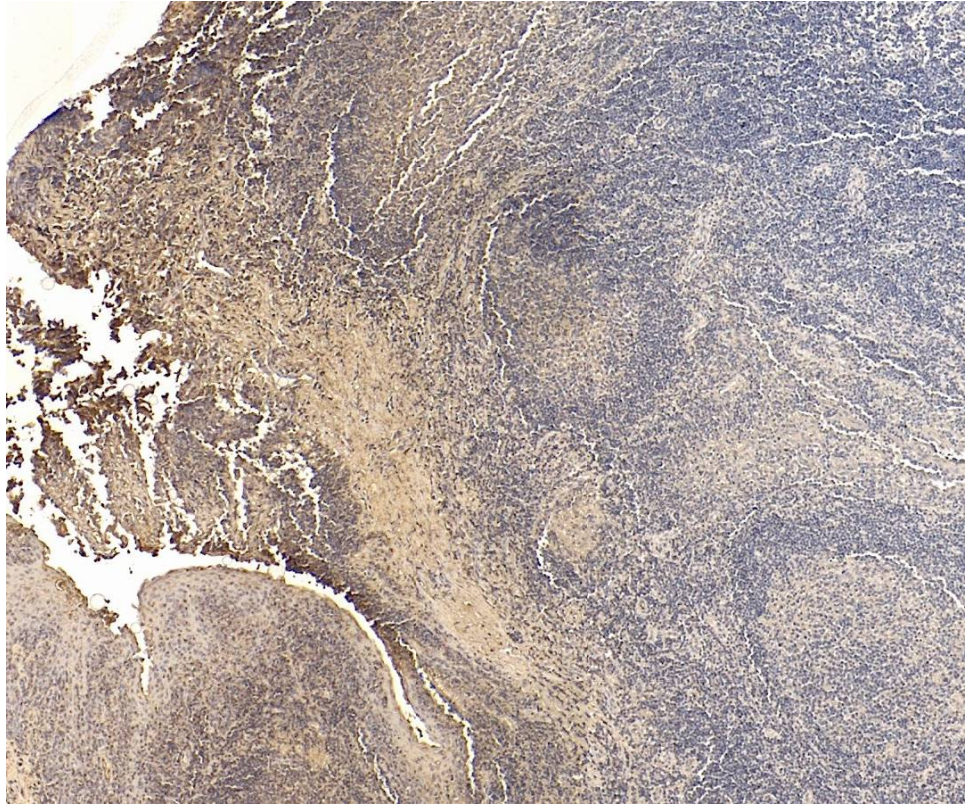
Increased placental expression of cannabinoid receptor 1 in preeclampsia: an observational study.

BMC Pregnancy Childbirth. 2014 Dec 2;14:395

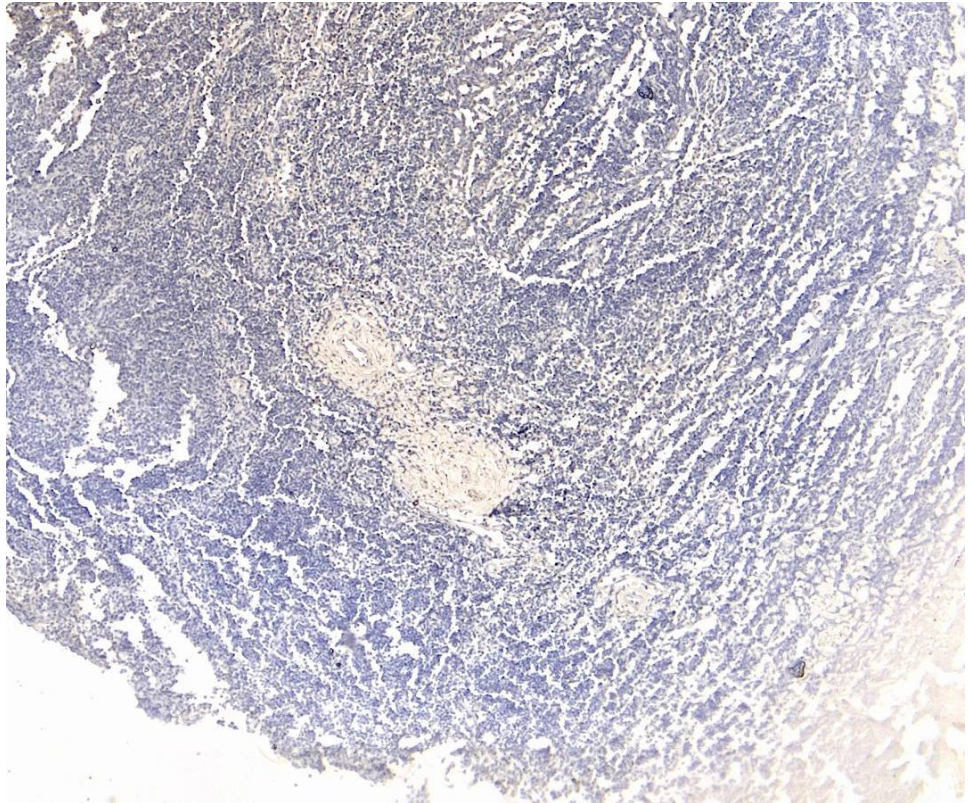
PMID: 25444073



EB06946 optimised QC. Primary incubation 1 hour at room temperature.  
 Image A: Human Hippocampus lysate at primary Ab concentration 2ug/ml. Images B, C: Human Cerebellum and Duodenum lysate at primary Ab concentration 1ug/ml. (Loaded 35µg protein in RIPA buffer, per lane). Detected by chemiluminescence.



EB06946 (4µg/ml) staining of paraffin embedded Human Tonsil. Heat induced antigen retrieval with citrate buffer pH 6, HRP-staining.



EB06946 Negative Control showing staining of paraffin embedded Human Tonsil, with no primary antibody.