



## UK Office

### Everest Biotech Ltd

Cherwell Innovation Centre  
77 Heyford Park  
Upper Heyford  
Oxfordshire  
OX25 5HD  
UK

Enquiries:

[info@everestbiotech.com](mailto:info@everestbiotech.com)

Sales:

[sales@everestbiotech.com](mailto:sales@everestbiotech.com)

Tech support:

[support@everestbiotech.com](mailto:support@everestbiotech.com)

Tel: +44 (0)1869 238326

Fax: +44 (0)1869 238327

## US Office

### Everest Biotech c/o Abcore

405 Maple Street, Suite A106  
Ramona,  
CA 92065  
USA

Inquiries:

[info@everestbiotech.com](mailto:info@everestbiotech.com)

Sales:

[usasales@everestbiotech.com](mailto:usasales@everestbiotech.com)

Tech support:

[support@everestbiotech.com](mailto:support@everestbiotech.com)

Tel: 888-320-4628 (toll-free)

Fax: 888-841-9041

[www.everestbiotech.com](http://www.everestbiotech.com)

**Research Use Only. Not for  
diagnostic or therapeutic use.**

## EB05563 - Goat Anti-CAPE Antibody

Size: 100µg specific antibody in 200µl



### Target Protein

**Principal Names:** SMC2, structural maintenance of chromosomes 2, PRO0324, CAP-E, CAPE, FLJ10093, SMC2L1, hCAP-E, OTTHUMP00000021818, OTTHUMP00000021819, SMC protein 2, SMC-2, SMC2 (structural maintenance of chromosomes 2, yeast)-like 1, SMC2 structural maintenance of chromosomes 2-like 1, XCAP-E homolog, chromosome-associated protein E, structural maintenance of chromosomes (SMC) family member, chromosome-associated protein E, structural maintenance of chromosomes protein 2

**Official Symbol:** SMC2

**Accession Number(s):** NP\_006435.2

**Human GeneID(s):** [10592](#)

**Important Comments:** Reported variants NP\_006435.2, NP\_001036015.1 and NP\_001036016.1 represent identical protein

### Immunogen

Peptide with sequence C-SKAKPPKGAHVEV, from the C Terminus of the protein sequence according to NP\_006435.2.

Please note the [peptide](#) is available for sale.

### Purification and Storage

Purified from goat serum by ammonium sulphate precipitation followed by antigen affinity chromatography using the immunizing peptide.

Supplied at 0.5 mg/ml in Tris saline, 0.02% sodium azide, pH7.3 with 0.5% bovine serum albumin.

Aliquot and store at -20°C. Minimize freezing and thawing.

### Applications Tested

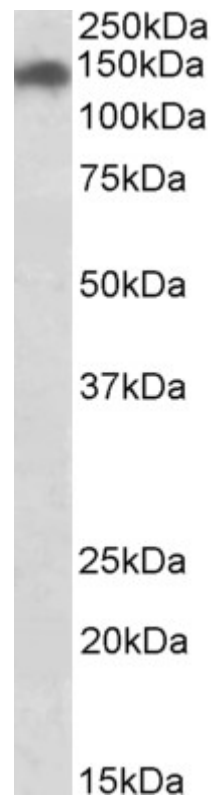
**Peptide ELISA:** antibody detection limit dilution 1:32000.

**Western blot:** Approx 140kDa band observed in lysates of cell line HeLa (calculated MW of 136kDa according to NP\_006435.2). Recommended concentration: 0.2-0.6µg/ml.

### Species Reactivity

**Tested:** Human

**Expected from sequence similarity:** Human



EB05563 (0.2 $\mu$ g/ml) staining of HeLa lysate (35 $\mu$ g protein in RIPA buffer). Primary incubation was 1 hour.  
Detected by chemiluminescence.