

## International Office

### Everest Biotech Ltd

Vector Laboratories, Inc.  
6737 Mowry Ave  
Newark, CA 94560  
United States

Customer Service:

[customerservice@vectorlabs.com](mailto:customerservice@vectorlabs.com)

Technical Service:

[technical@vectorlabs.com](mailto:technical@vectorlabs.com)

Tel: +1 (800) 227-6666

[www.everestbiotech.com](http://www.everestbiotech.com)

**Research Use Only. Not for  
diagnostic or therapeutic use.**

## EB11988 - Goat Anti-CAPN1 Antibody

Size: 100µg specific antibody in 200µl



### Target Protein

**Principal Names:** CAPN1, calpain 1, (mu/I) large subunit, CANP, CANP1, CANPL1, muCANP, muCL, CANP 1, calcium-activated neutral proteinase 1, calpain mu-type, calpain, large polypeptide L1, calpain-1 catalytic subunit, calpain-1 large subunit, cell proliferation-inducing gene 30 protein, cell proliferation-inducing protein 30, micromolar-calpain

**Official Symbol:** CAPN1

**Accession Number(s):** NP\_005177.2

**Human GeneID(s):** [823](#)

**Important Comments:** Reported variants represent identical protein: NP\_001185797.1, NP\_005177.2, NP\_001185798.1.

### Immunogen

Peptide with sequence C-SEKSAGTVELDD, from the internal region of the protein sequence according to NP\_005177.2.

Please note the [peptide](#) is available for sale.

### Purification and Storage

Purified from goat serum by ammonium sulphate precipitation followed by antigen affinity chromatography using the immunizing peptide.

Supplied at 0.5 mg/ml in Tris saline, 0.02% sodium azide, pH7.3 with 0.5% bovine serum albumin.

Aliquot and store at -20°C. Minimize freezing and thawing.

### Applications Tested

**Peptide ELISA:** antibody detection limit dilution 1:32000.

**Western blot:** Approx 80kDa band observed in Human Kidney, Placenta and Spleen lysates (calculated MW of 81.9kDa according to NP\_005177.2). Recommended concentration: 0.3-1µg/ml. Primary incubation was 1 hour.

**IHC:** Paraffin embedded Human Kidney. Recommended concentration: 5µg/ml.

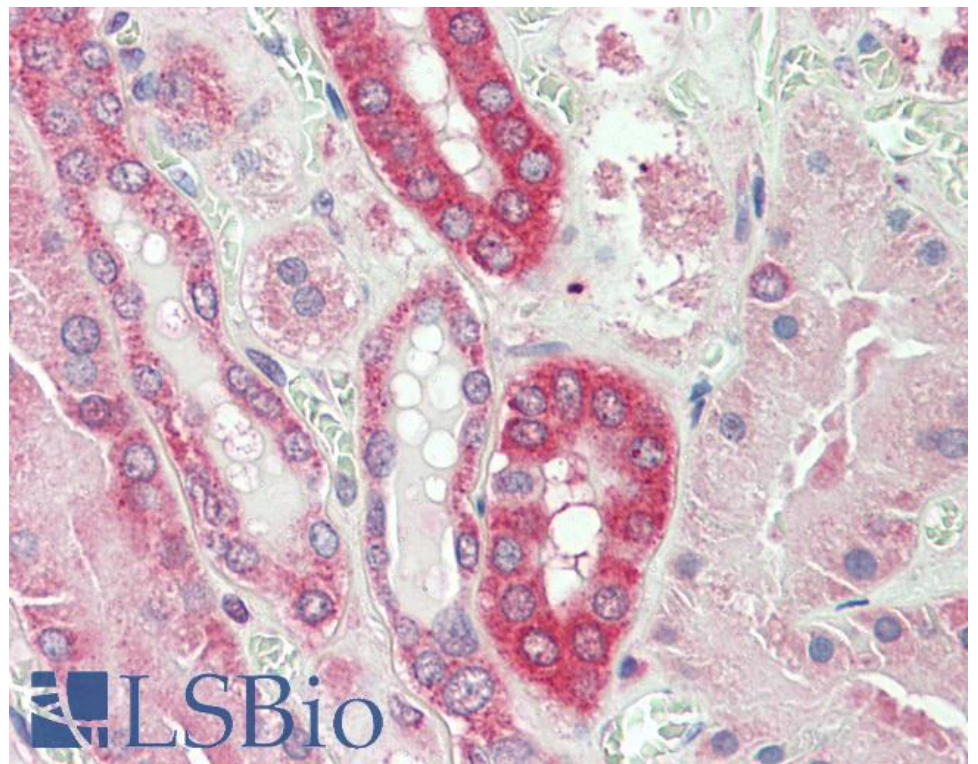
### Species Reactivity

**Tested:** Human

**Expected from sequence similarity:** Human



EB11988 (0.3 $\mu$ g/ml) staining of Human Spleen lysate (35 $\mu$ g protein in RIPA buffer). Detected by chemiluminescence.



EB11988 (5 $\mu$ g/ml) staining of paraffin embedded Human Kidney. Steamed antigen retrieval with citrate buffer pH 6, AP-staining.