



UK Office

Everest Biotech Ltd

Cherwell Innovation Centre
77 Heyford Park
Upper Heyford
Oxfordshire
OX25 5HD
UK

Enquiries:

info@everestbiotech.com

Sales:

sales@everestbiotech.com

Tech support:

support@everestbiotech.com

Tel: +44 (0)1869 238326

Fax: +44 (0)1869 238327

US Office

Everest Biotech c/o Abcore

405 Maple Street, Suite A106
Ramona,
CA 92065
USA

Inquiries:

info@everestbiotech.com

Sales:

usasales@everestbiotech.com

Tech support:

support@everestbiotech.com

Tel: 888-320-4628 (toll-free)

Fax: 888-841-9041

www.everestbiotech.com

**Research Use Only. Not for
diagnostic or therapeutic use.**

EB07680 - Goat Anti-Carabin / TBC1D10C Antibody

Size: 100µg specific antibody in 200µl



Target Protein

Principal Names: TBC1D10C, carabin, TBC1 domain family, member 10C, FLJ00332, MGC46488

Official Symbol: TBC1D10C

Accession Number(s): NP_940919.1

Human GeneID(s): [374403](#)

Non-Human GeneID(s): 108995 (mouse)

Immunogen

Peptide with sequence C-PRRKPQTRGKTFH, from the internal region of the protein sequence according to NP_940919.1.

Please note the [peptide](#) is available for sale.

Purification and Storage

Purified from goat serum by ammonium sulphate precipitation followed by antigen affinity chromatography using the immunizing peptide.

Supplied at 0.5 mg/ml in Tris saline, 0.02% sodium azide, pH7.3 with 0.5% bovine serum albumin.

Aliquot and store at -20°C. Minimize freezing and thawing.

Applications Tested

Peptide ELISA: antibody detection limit dilution 1:128000.

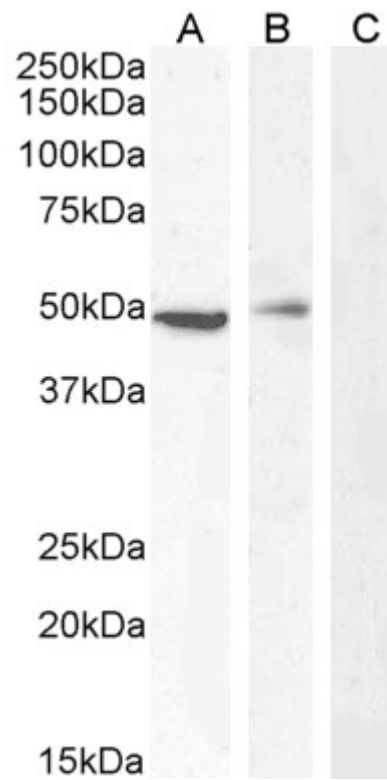
Western blot: Approx 48-50kDa band observed in lysates of cell line Jurkat and in Mouse Thymus lysates and approx 50kDa in Peripheral Blood Mononuclear (PBM) and in Human Spleen lysates (calculated MW of 49.7kDa according to Human NP_940919.1 and 49.9kDa according to Mouse NP_848765.2). Recommended concentration: 0.3-2µg/ml. Primary incubation 1 hour at room temperature. **Negative Control:** A431 cell lysate.

Flow Cytometry: Flow cytometric analysis of Jurkat cells. Recommended concentration: 10ug/ml.

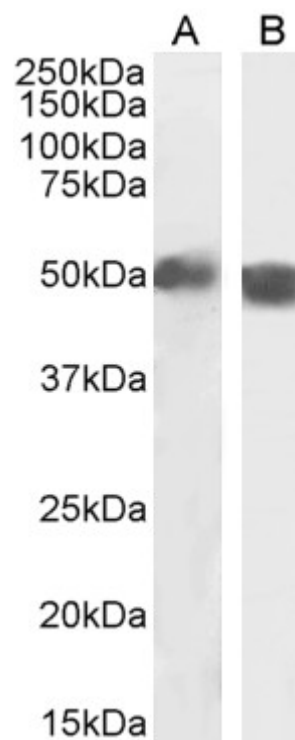
Species Reactivity

Tested: Human, Mouse

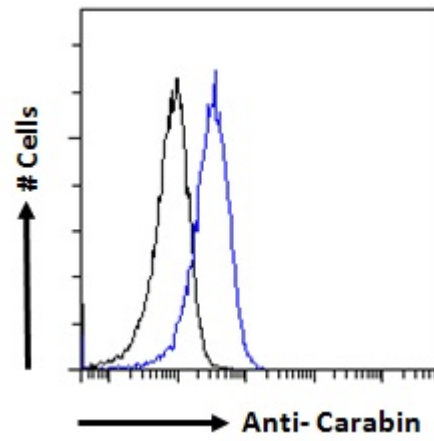
Expected from sequence similarity: Human, Mouse, Rat, Dog, Pig



EB07680 (0.5 μ g/ml) staining of Jurkat (A), (0.3 μ g/ml) PBM (B) and negative control A431 (C) cell lysate (35 μ g protein in RIPA buffer). Detected by chemiluminescence.



EB07680 (2 μ g/ml) staining of Human Spleen (A) and Mouse Thymus (B) lysate (35 μ g protein in RIPA buffer). Detected by chemiluminescence.



EB07680 Flow cytometric analysis of paraformaldehyde fixed Jurkat cells (blue line), permeabilized with 0.5% Triton. Primary incubation 1hr (10ug/ml) followed by Alexa Fluor 488 secondary antibody (1ug/ml). IgG control: Unimmunized goat IgG (black line) followed by Alexa Fluor 488 secondary antibody.