



UK Office

Everest Biotech Ltd

Cherwell Innovation Centre
77 Heyford Park
Upper Heyford
Oxfordshire
OX25 5HD
UK

Enquiries:

info@everestbiotech.com

Sales:

sales@everestbiotech.com

Tech support:

support@everestbiotech.com

Tel: +44 (0)1869 238326

Fax: +44 (0)1869 238327

US Office

Everest Biotech c/o Abcore

405 Maple Street, Suite A106
Ramona,
CA 92065
USA

Inquiries:

info@everestbiotech.com

Sales:

usasales@everestbiotech.com

Tech support:

support@everestbiotech.com

Tel: 888-320-4628 (toll-free)

Fax: 888-841-9041

www.everestbiotech.com

**Research Use Only. Not for
diagnostic or therapeutic use.**

EB05886 - Goat Anti-CARD11 Antibody

Size: 100µg specific antibody in 200µl



Target Protein

Principal Names: CARD11, caspase recruitment domain family, member 11, BIMP3, CARMA1, MGC133069, card-maguk protein 1, bcl10-interacting maguk protein 3

Official Symbol: CARD11

Accession Number(s): NP_115791.3

Human GeneID(s): [84433](#)

Non-Human GeneID(s): 108723 (mouse)

Immunogen

Peptide with sequence C-QRKTIVVDEDQL, from the C Terminus of the protein sequence according to NP_115791.3.

Please note the [peptide](#) is available for sale.

Purification and Storage

Purified from goat serum by ammonium sulphate precipitation followed by antigen affinity chromatography using the immunizing peptide.

Supplied at 0.5 mg/ml in Tris saline, 0.02% sodium azide, pH7.3 with 0.5% bovine serum albumin.

Aliquot and store at -20°C. Minimize freezing and thawing.

Applications Tested

Peptide ELISA: antibody detection limit dilution 1:32000.

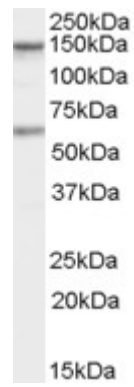
Western blot: Approx 150+65kDa bands observed in lysates of cell line Jurkat (calculated MW of 133kDa according to NP_115791.2). Recommended concentration: 1-3µg/ml. An additional band of unknown identity was also consistently observed at 60kDa. This band was successfully blocked by incubation with the immunising peptide.

IHC: In paraffin embedded Human Spleen shows nuclear staining. Recommended concentration: 2-5µg/ml.

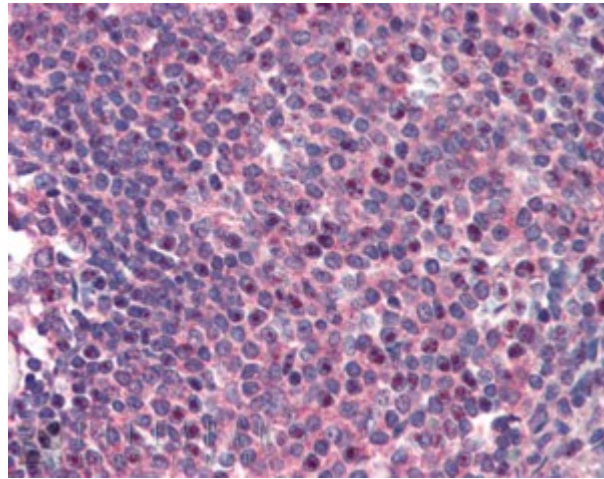
Species Reactivity

Tested: Human

Expected from sequence similarity: Human, Mouse, Dog, Cow



EB05886 staining (1 μ g/ml) of Human Jurkat cells (RIPA buffer, 35 μ g total protein per lane). Primary incubated for 1 hour. Detected by chemiluminescence.



EB05886 (2 μ g/ml) staining of paraffin embedded Human Spleen. Steamed antigen retrieval with citrate buffer pH 6, AP-staining.