



UK Office

Everest Biotech Ltd

Cherwell Innovation Centre
77 Heyford Park
Upper Heyford
Oxfordshire
OX25 5HD
UK

Enquiries:

info@everestbiotech.com

Sales:

sales@everestbiotech.com

Tech support:

support@everestbiotech.com

Tel: +44 (0)1869 238326

www.everestbiotech.com

**Research Use Only. Not for
diagnostic or therapeutic use.**

EB11810 - Goat Anti-cardiac troponin T Antibody

Size: 100µg specific antibody in 200µl



Target Protein

Principal Names: cardiac muscle troponin T, cardiomyopathy, dilated 1D (autosomal dominant), cardiomyopathy, hypertrophic 2, CMH2, CMPD2, cTnT, LVNC6, MGC3889, OTTHUMP00000033864, OTTHUMP00000033865, OTTHUMP00000033866, OTTHUMP00000033867, OTTHUMP00000033870, OTTHUMP00000218095, RCM3, TNNT2, TnTC, troponin T type 2 (cardiac), troponin T, cardiac muscle, troponin T2, cardiac

Official Symbol: TNNT2

Accession Number(s): NP_000355.2; NP_001001430.1; NP_001001431.1;
NP_001001432.1

Human GeneID(s): [7139](#)

Non-Human GeneID(s): 21956 (mouse), 24837 (rat)

Important Comments: This antibody is expected to recognize all reported isoforms (NP_000355.2; NP_001001430.1; NP_001001431.1; NP_001001432.1).

Immunogen

Peptide with sequence C-RNRINDNQKVSKT, from the C Terminus of the protein sequence according to NP_000355.2; NP_001001430.1; NP_001001431.1; NP_001001432.1.

Please note the [peptide](#) is available for sale.

Purification and Storage

Purified from goat serum by ammonium sulphate precipitation followed by antigen affinity chromatography using the immunizing peptide.

Supplied at 0.5 mg/ml in Tris saline, 0.02% sodium azide, pH7.3 with 0.5% bovine serum albumin.

Aliquot and store at -20°C. Minimize freezing and thawing.

Applications Tested

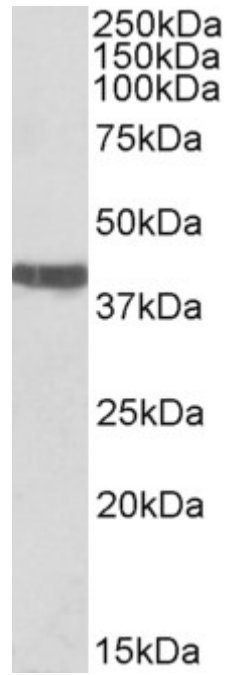
Peptide ELISA: antibody detection limit dilution 1:128000.

Western blot: Approx 40kDa band observed in Human, fetal Mouse and adult Rat and Pig Heart lysates (calculated MW of 35.6kDa according to Human NP_000355.2 and 35.7kDa according to Rat NP_036808.1). The observed molecular weight corresponds to earlier findings in literature with different antibodies (Luedde et al, Cardiovasc Res. 2010 Jun 1;86(3):452-60. PMID:20083571). Recommended concentration: 0.03-0.1 µg/ml.

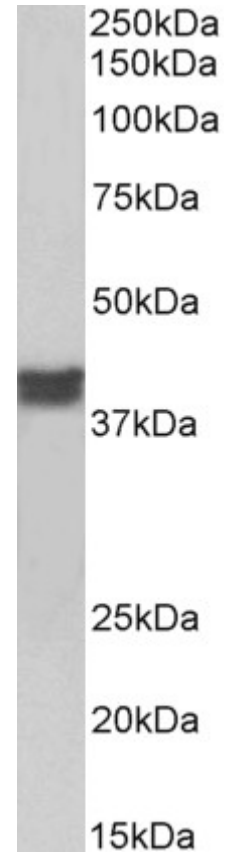
Species Reactivity

Tested: Human, Mouse, Rat, Pig

Expected from sequence similarity: Human, Mouse, Rat, Cat, Dog, Pig, Cow



EB11810 (0.03 μ g/ml) staining of Rat Heart lysate (35 μ g protein in RIPA buffer). Primary incubation was 1 hour. Detected by chemiluminescence.



EB11810 (0.01 μ g/ml) staining of Pig Heart lysate (35 μ g protein in RIPA buffer). Primary incubation was 1 hour. Detected by chemiluminescence.