



UK Office

Everest Biotech Ltd

Cherwell Innovation Centre
77 Heyford Park
Upper Heyford
Oxfordshire
OX25 5HD
UK

Enquiries:

info@everestbiotech.com

Sales:

sales@everestbiotech.com

Tech support:

support@everestbiotech.com

Tel: +44 (0)1869 238326

www.everestbiotech.com

**Research Use Only. Not for
diagnostic or therapeutic use.**

EB06481 - Goat Anti-CASP4 Antibody

Size: 100µg specific antibody in 200µl



Target Protein

Principal Names: CASP4, TX, ICH-2, Mih1/TX, ICEREL-II, ICE(rel)II, caspase 4, apoptosis-related cysteine protease, apoptotic cysteine protease Mih1/TX, caspase 4

Official Symbol: CASP4

Accession Number(s): NP_001216.1; NP_150649.1

Human GeneID(s): [837](#)

Important Comments: This antibody is expected to recognise both isoforms of CASP4 (alpha, represented by NP_001216.1 and gamma, NP_150649.1).

Immunogen

Peptide with sequence CKERAEIYPIKERN, from the internal region of the protein sequence according to NP_001216.1; NP_150649.1.

Please note the [peptide](#) is available for sale.

Purification and Storage

Purified from goat serum by ammonium sulphate precipitation followed by antigen affinity chromatography using the immunizing peptide.

Supplied at 0.5 mg/ml in Tris saline, 0.02% sodium azide, pH7.3 with 0.5% bovine serum albumin.

Aliquot and store at -20°C. Minimize freezing and thawing.

Applications Tested

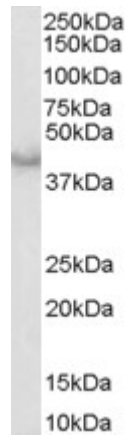
Peptide ELISA: antibody detection limit dilution 1:16000.

Western blot: Approx 40kDa band observed in Human Heart lysates (calculated MW of 43.3kDa according to NP_001216.1). Recommended concentration: 0.3-1µg/ml.

Species Reactivity

Tested: Human

Expected from sequence similarity: Human, Mouse, Cat, Dog, Cow



EB06481 (0.3 μ g/ml) staining of Human Heart lysate (35 μ g protein in RIPA buffer). Primary incubation was 1 hour. Detected by chemiluminescence.