

## UK Office

### Everest Biotech Ltd

Cherwell Innovation Centre  
77 Heyford Park  
Upper Heyford  
Oxfordshire  
OX25 5HD  
UK

Enquiries:

[info@everestbiotech.com](mailto:info@everestbiotech.com)

Sales:

[sales@everestbiotech.com](mailto:sales@everestbiotech.com)

Tech support:

[support@everestbiotech.com](mailto:support@everestbiotech.com)

Tel: +44 (0)1869 238326

[www.everestbiotech.com](http://www.everestbiotech.com)

**Research Use Only. Not for  
diagnostic or therapeutic use.**

## EB07286 - Goat Anti-Caspase 3 Antibody

Size: 100µg specific antibody in 200µl



### Target Protein

**Principal Names:** CASP3, caspase 3, caspase 3, apoptosis-related cysteine protease, HGNC:1504, caspase 3, apoptosis-related cysteine peptidase, CPP32, CPP32B, SCA-1, PARP cleavage protease, SREBP cleavage activity 1, Yama, apopain, cysteine protease CPP32, procaspase3

**Official Symbol:** CASP3

**Accession Number(s):** NP\_004337.2; NP\_116786.1

**Human GeneID(s):** [836](#)

**Important Comments:** This antibody is expected to recognise both reported isoforms (NP\_004337.2 and NP\_116786.1).

### Immunogen

Peptide with sequence C-RDVSKEDHSKRS, from the internal region of the protein sequence according to NP\_004337.2; NP\_116786.1.

Please note the [peptide](#) is available for sale.

### Purification and Storage

Purified from goat serum by ammonium sulphate precipitation followed by antigen affinity chromatography using the immunizing peptide.

Supplied at 0.5 mg/ml in Tris saline, 0.02% sodium azide, pH7.3 with 0.5% bovine serum albumin.

Aliquot and store at -20°C. Minimize freezing and thawing.

### Applications Tested

**Peptide ELISA:** antibody detection limit dilution 1:32000.

**Western blot:** Approx 32kDa band observed in lysates of cell line MOLT4 and in Mouse Liver lysates (calculated MW of 31.6kDa according to Human NP\_004337.2 and 31.4kDa according to Mouse NP\_033940.1, NP\_001271338.1). An additional band of 65kDa was also consistently observed in MOLT4 and was successfully blocked by incubation with the immunizing peptide. Recommended concentration: 0.5-1µg/ml. Primary incubation 1 hour at room temperature.

**Immunofluorescence:** Strong expression of the protein seen in the cytoplasm of U251 cells. Recommended concentration: 10µg/ml. This antibody has been successfully used in ICC on Rat: Hóngyi Zhào et al. (2018) PMID: 29853981.

### Species Reactivity

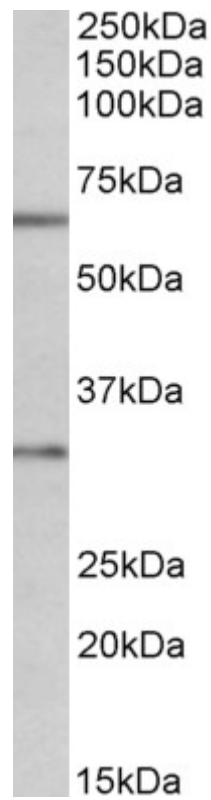
**Tested:** Human, Mouse, Rat

**Expected from sequence similarity:** Human, Mouse, Rat, Dog

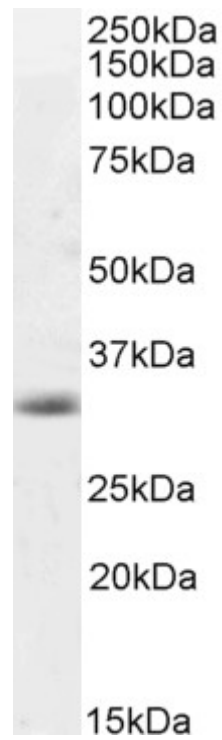
### Specific Reference

**This antibody has been successfully used in ICC on Rat:**

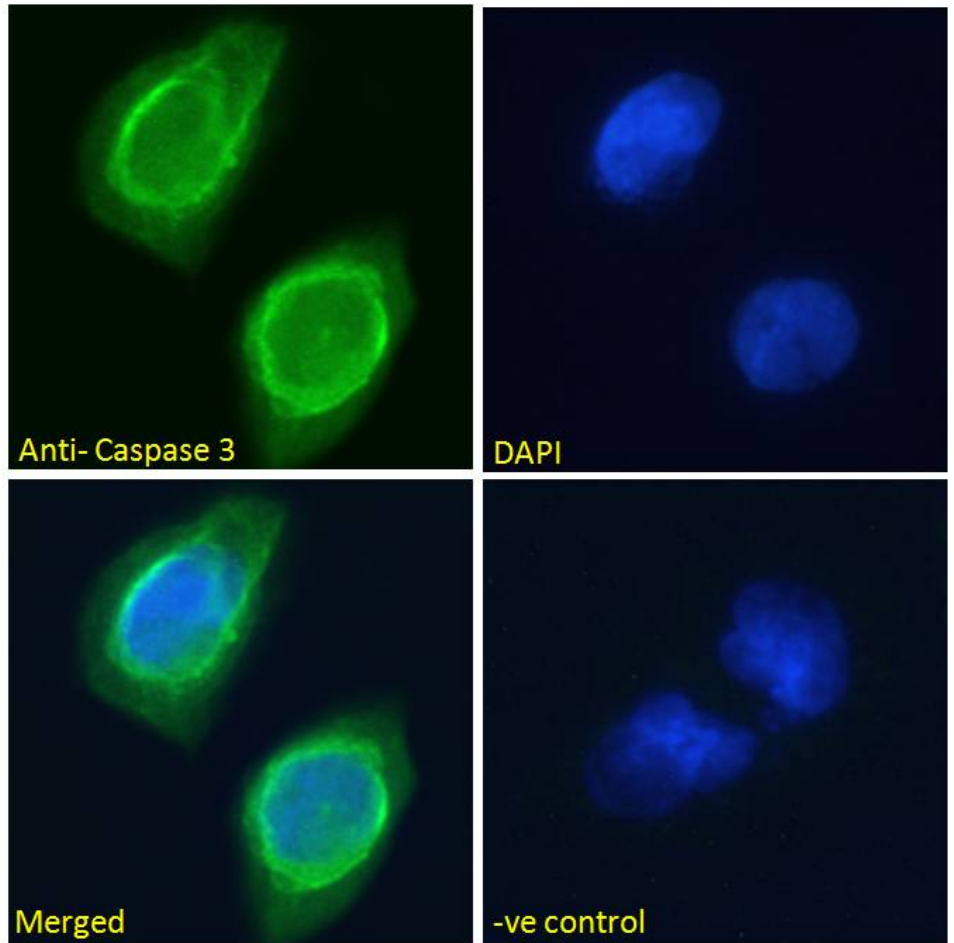
Hóngyi Zhào, Yu Liu, Jing Zeng, Dandan Li, Weiwei Zhang, and Yonghua Huang  
Troloxerutin and Cerebroprotein Hydrolysate Injection Protects Neurovascular Units from Oxygen-Glucose Deprivation and Reoxygenation-Induced Injury In Vitro  
Evidence-Based Complementary and Alternative Medicine, vol. 2018, Article ID 9859672, 10 pages, 2018  
PMID: 29853981



EB07286 (1 $\mu$ g/ml) staining of MOLT4 lysate (35 $\mu$ g protein in RIPA buffer). Primary incubation was 1 hour.  
Detected by chemiluminescence.



EB07286 (0.5 $\mu$ g/ml) staining of Mouse Liver lysate (35 $\mu$ g protein in RIPA buffer). Detected by  
chemiluminescence.



EB07286 Immunofluorescence analysis of paraformaldehyde fixed U251 cells, permeabilized with 0.15% Triton. Primary incubation 1hr (10ug/ml) followed by Alexa Fluor 488 secondary antibody (2ug/ml), showing cytoplasmic staining. The nuclear stain is DAPI (blue). Negative control: Unimmunized goat IgG (10ug/ml) followed by Alexa Fluor 488 secondary antibody (2ug/ml).