



UK Office

Everest Biotech Ltd

Cherwell Innovation Centre
77 Heyford Park
Upper Heyford
Oxfordshire
OX25 5HD
UK

Enquiries:

info@everestbiotech.com

Sales:

sales@everestbiotech.com

Tech support:

support@everestbiotech.com

Tel: +44 (0)1869 238326

Fax: +44 (0)1869 238327

US Office

Everest Biotech c/o Abcore

405 Maple Street, Suite A106
Ramona,
CA 92065
USA

Inquiries:

info@everestbiotech.com

Sales:

usasales@everestbiotech.com

Tech support:

support@everestbiotech.com

Tel: 888-320-4628 (toll-free)

Fax: 888-841-9041

www.everestbiotech.com

**Research Use Only. Not for
diagnostic or therapeutic use.**

EB07282-T - Goat Anti-Catalase / CAT Antibody - Trial

Size: 20µg specific antibody in 40µl



Target Protein

Principal Names: CAT, catalase, HGNC:1516, MGC138422, MGC138424

Official Symbol: CAT

Accession Number(s): NP_001743.1

Human GeneID(s): [847](#)

Non-Human GeneID(s): 12359 (mouse)

Immunogen

Peptide with sequence C-DKYNAEKPKNAIHT, from the internal region of the protein sequence according to NP_001743.1.

Please note the [peptide](#) is available for sale.

Purification and Storage

Purified from goat serum by ammonium sulphate precipitation followed by antigen affinity chromatography using the immunizing peptide.

Supplied at 0.5 mg/ml in Tris saline, 0.02% sodium azide, pH7.3 with 0.5% bovine serum albumin.

Aliquot and store at -20°C. Minimize freezing and thawing.

Applications Tested

Peptide ELISA: antibody detection limit dilution 1:128000.

Western blot: Approx 60kDa band observed in Human and Mouse Kidney and Liver lysates (calculated MW of 59.8kDa according to Human NP_001743.1 and Mouse NP_033934.2). Recommended concentration: 0.003-0.01µg/ml. Primary incubation 1 hour at room temperature.

IHC: Paraffin embedded Human Kidney. Recommended concentration: 4-6µg/ml.

Species Reactivity

Tested: Human, Mouse

Expected from sequence similarity: Human, Mouse, Dog

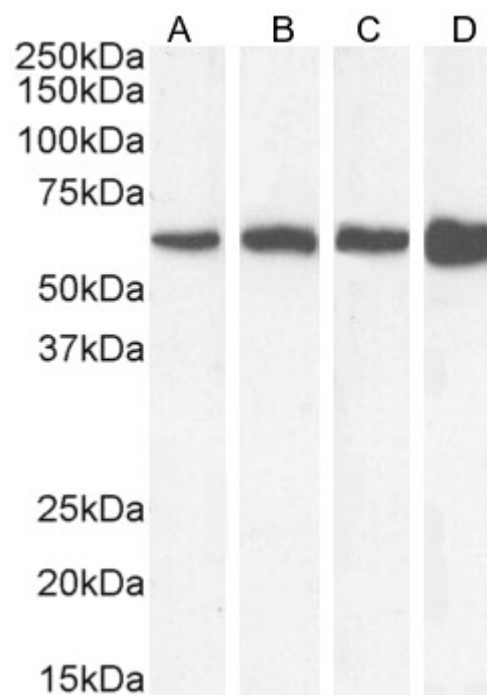
Specific References

This antibody (previous batch) has been successfully used in Western blot on Mouse:

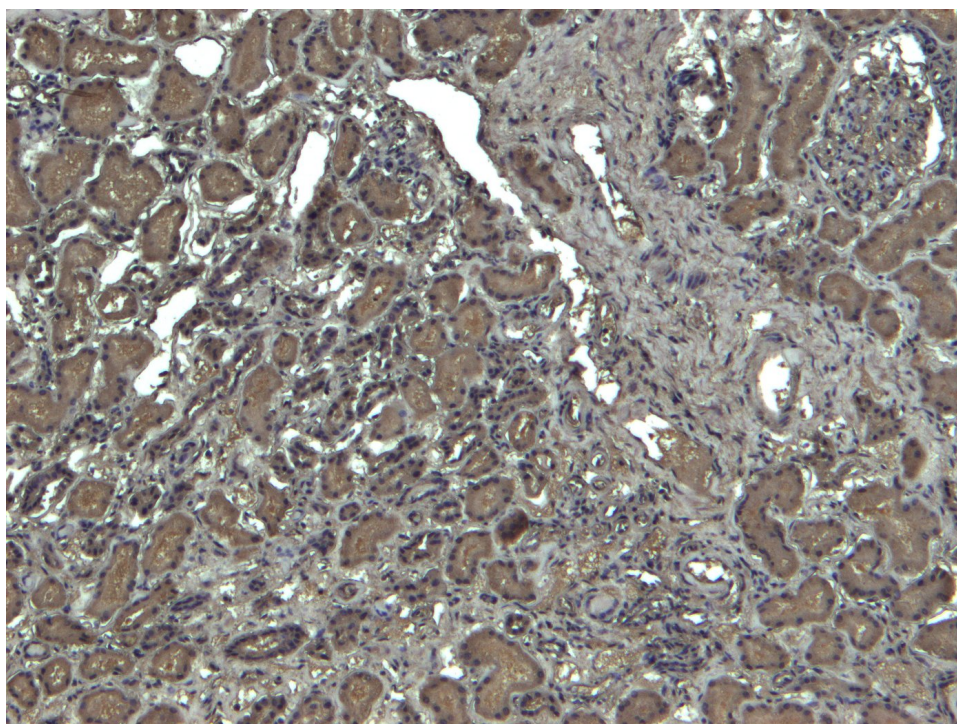
Baret P, Le Sage F, Planesse C, Meilhac O, Devin A, Bourdon E, Rondeau P
Glycated human albumin alters mitochondrial respiration in preadipocyte 3T3-L1 cells. Biofactors. 2017 Jul 8;43(4):577-592.
PMID: 28543688

This antibody (previous batch) has been successfully used in Western blot on Mouse:

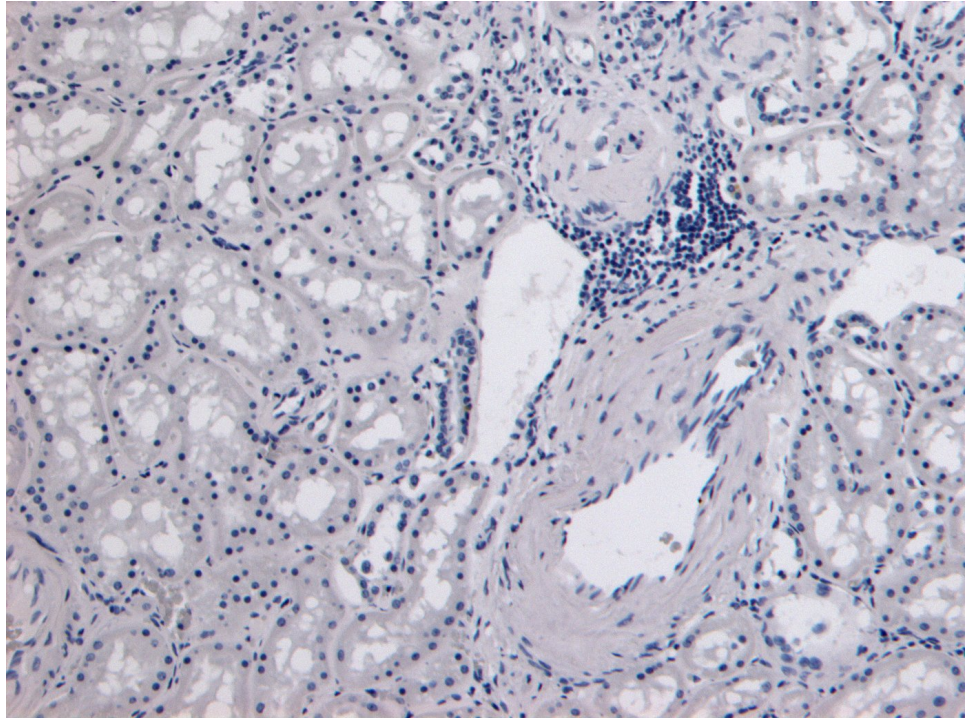
Patche J, Girard D, Catan A, Boyer F, Dobi A, Planesse C, Diotel N, Guerin-Dubourg A, Baret P, Bravo SB, Paradela-Dobarro B, Álvarez E, Essop MF, Meilhac O, Bourdon E, Rondeau P.
Diabetes-induced hepatic oxidative stress: a new pathogenic role for glycated albumin. Free Radic Biol Med. 2017 Jan;102:133-148.
PMID: 27890722



EB07282 (0.01µg/ml) staining of Human Kidney (A) and Liver (B) and Mouse Kidney (C) and Liver (D) lysates (35µg protein in RIPA buffer). Detected by chemiluminescence.



EB07282 (4µg/ml) staining of paraffin embedded Human Kidney. Heat induced antigen retrieval with citrate buffer pH 6, HRP-staining.



EB07282 Negative Control showing staining of paraffin embedded Human Kidney, with no primary antibody.