



UK Office

Everest Biotech Ltd

Cherwell Innovation Centre
77 Heyford Park
Upper Heyford
Oxfordshire
OX25 5HD
UK

Enquiries:

info@everestbiotech.com

Sales:

sales@everestbiotech.com

Tech support:

support@everestbiotech.com

Tel: +44 (0)1869 238326

Fax: +44 (0)1869 238327

US Office

Everest Biotech c/o Abcore

405 Maple Street, Suite A106
Ramona,
CA 92065
USA

Inquiries:

info@everestbiotech.com

Sales:

usasales@everestbiotech.com

Tech support:

support@everestbiotech.com

Tel: 888-320-4628 (toll-free)

Fax: 888-841-9041

www.everestbiotech.com

**Research Use Only. Not for
diagnostic or therapeutic use.**

EB11824 - Goat Anti-cathepsin C / DPP1 (aa238-252) Antibody

Size: 100µg specific antibody in 200µl



Target Protein

Principal Names: cathepsin C, cathepsin J, CPPI, CTSC, dipeptidyl peptidase 1, dipeptidyl peptidase I, dipeptidyl transferase, dipeptidyl-peptidase I, DPP1, DPPI, DPP-I, HMS, JP, JPD, OTTHUMP00000235623, OTTHUMP00000235624, OTTHUMP00000235625, OTTHUMP00000235627, PALS, PLS

Official Symbol: CTSC

Accession Number(s): NP_001805.3

Human GeneID(s): [1075](#)

Important Comments: This antibody is expected to recognize isoform a (NP_001805.3) only.

Immunogen

Peptide with sequence C-RNVHGINFVSPVRNQ, from the internal region of the protein sequence according to NP_001805.3.

Please note the [peptide](#) is available for sale.

Purification and Storage

Purified from goat serum by ammonium sulphate precipitation followed by antigen affinity chromatography using the immunizing peptide.

Supplied at 0.5 mg/ml in Tris saline, 0.02% sodium azide, pH7.3 with 0.5% bovine serum albumin.

Aliquot and store at -20°C. Minimize freezing and thawing.

Applications Tested

Peptide ELISA: antibody detection limit dilution 1:128000.

Western blot: Approx 24kDa band observed in Human Neutrophils lysates (calculated MW of 51.8kDa according to NP_001805.3). This molecular weight is routinely observed by other sources. Recommended concentration: 1-3µg/ml. Primary incubation was 1 hour.

IHC: Paraffin embedded Human Lung and Kidney. Recommended concentration: 5µg/ml.

Species Reactivity

Tested: Human

Expected from sequence similarity: Human

Specific References

This antibody has been successfully used in Western blot on Human:

N'GUESSAN Koffi, SEREN Seda, DALLET-CHOISY Sandrine, MARCHAND-ADAM Sylvain, DASSE Sery Romualde, KORKMAZ Bric

Thérapeutique de la granulomatose avec polyangéite : nouvelle approche par inhibition de la cathepsine C des cellules CD34+

Rev int sc méd Abj -RISM-2019;21,1:32-38.

PMID: 0

This antibody has been successfully used in Western blot on Human:

Seren S et al

Consequences of cathepsin C inactivation for membrane exposure of proteinase 3, the target antigen in autoimmune vasculitis.

J Biol Chem. 2018 Aug 10;293(32):12415-12428.

PMID: 29925593

This antibody has been successfully used in WB on Macaque:

Hamon Y et al

Neutrophilic cathepsin C is matured by a multi-step proteolytic process and secreted by activated cells during inflammatory lung diseases.

J Biol Chem. 2016 Feb 16. pii: jbc.M115.707109

PMID: 26884336

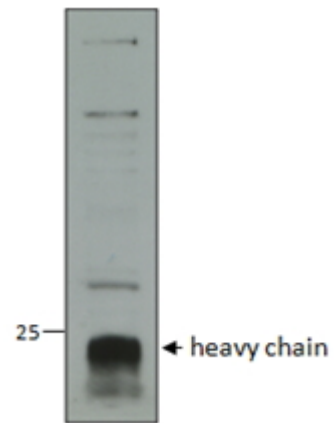
This antibody has been successfully used in Western blot on Human:

Hamon Y et al

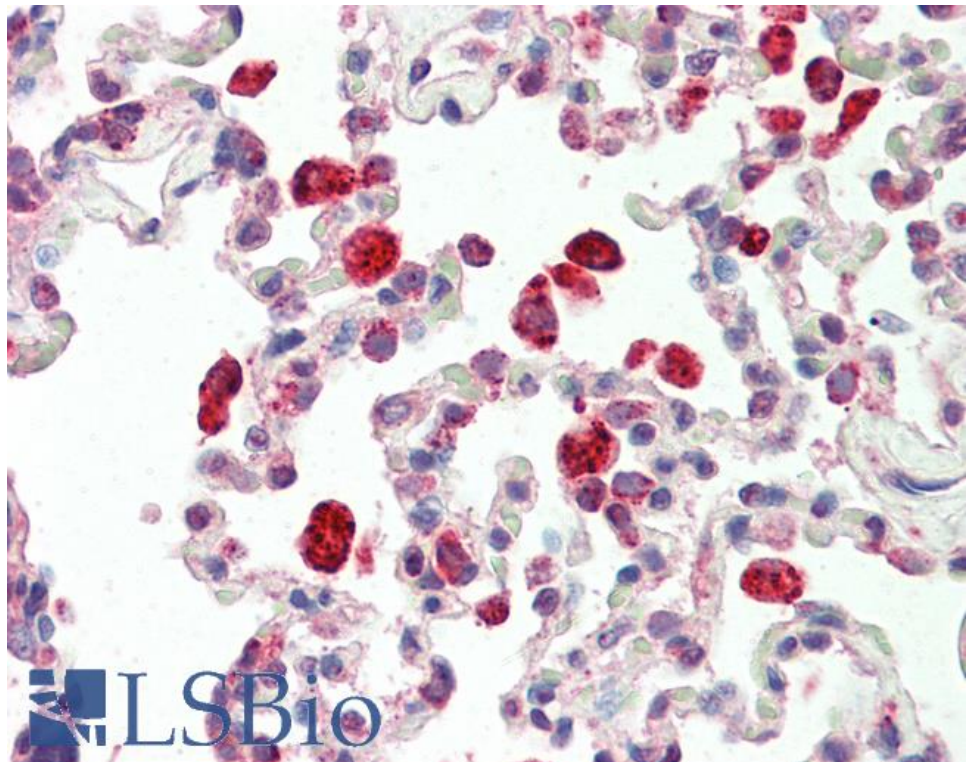
Analysis of urinary cathepsin C for diagnosing Papillon-Lefèvre syndrome.

FEBS J. 2016 Feb;283(3):498-509

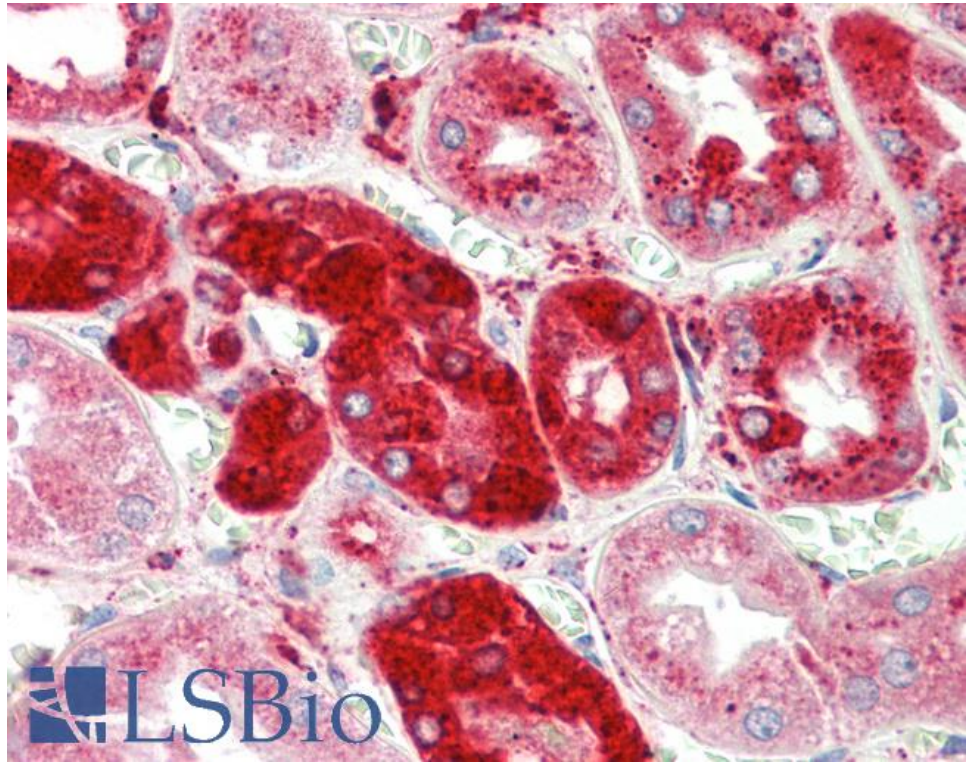
PMID: 26607765



EB11824 (1µg/ml) staining of Human Neutrophils lysate (35µg protein in RIPA buffer). Data obtained from a customer. Detected by chemiluminescence.



EB11824 (5µg/ml) staining of paraffin embedded Human Lung. Steamed antigen retrieval with citrate buffer pH 6, AP-staining.



EB11824 (5µg/ml) staining of paraffin embedded Human Kidney. Steamed antigen retrieval with citrate buffer pH 6, AP-staining.