



UK Office

Everest Biotech Ltd

Cherwell Innovation Centre
77 Heyford Park
Upper Heyford
Oxfordshire
OX25 5HD
UK

Enquiries:

info@everestbiotech.com

Sales:

sales@everestbiotech.com

Tech support:

support@everestbiotech.com

Tel: +44 (0)1869 238326

www.everestbiotech.com

**Research Use Only. Not for
diagnostic or therapeutic use.**

EB06733 - Goat Anti-Cathepsin F Antibody

Size: 100µg specific antibody in 200µl



Target Protein

Principal Names: CTSF, cathepsin F, HGNC:2531, CATSF

Official Symbol: CTSF

Accession Number(s): NP_003784.2

Human GeneID(s): [8722](#)

Immunogen

Peptide with sequence CGVNTMASSAVVD, from the C Terminus of the protein sequence according to NP_003784.2.

Please note the [peptide](#) is available for sale.

Purification and Storage

Purified from goat serum by ammonium sulphate precipitation followed by antigen affinity chromatography using the immunizing peptide.

Supplied at 0.5 mg/ml in Tris saline, 0.02% sodium azide, pH7.3 with 0.5% bovine serum albumin.

Aliquot and store at -20°C. Minimize freezing and thawing.

Applications Tested

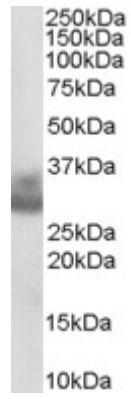
Peptide ELISA: antibody detection limit dilution 1:32000.

Western blot: Experiments gave bands at approx 30kDa and 35kDa in Human Prostate and Ovary lysates after 0.3µg/ml antibody staining. These bands correspond to earlier findings in literature with different antibodies (Wang et al, J Biol Chem. 1998 Nov 27;273(48):32000-8; PMID: 9822672). This protein has a calculated MW of 53.4kDa according to NP_003784.2. Recommended concentration: 0.3-1µg/ml.

Species Reactivity

Tested: Human

Expected from sequence similarity: Human, Mouse, Rat, Dog



EB06733 (0.3 μ g/ml) staining of Human Ovary lysate (35 μ g protein in RIPA buffer). Primary incubation was 1 hour. Detected by chemiluminescence.