



UK Office

Everest Biotech Ltd

Cherwell Innovation Centre
77 Heyford Park
Upper Heyford
Oxfordshire
OX25 5HD
UK

Enquiries:

info@everestbiotech.com

Sales:

sales@everestbiotech.com

Tech support:

support@everestbiotech.com

Tel: +44 (0)1869 238326

Fax: +44 (0)1869 238327

US Office

Everest Biotech c/o Abcore

405 Maple Street, Suite A106
Ramona,
CA 92065
USA

Inquiries:

info@everestbiotech.com

Sales:

usasales@everestbiotech.com

Tech support:

support@everestbiotech.com

Tel: 888-320-4628 (toll-free)

Fax: 888-841-9041

www.everestbiotech.com

**Research Use Only. Not for
diagnostic or therapeutic use.**

EB10960 - Goat Anti-CB1 (aa44-58) Antibody

Size: 100µg specific antibody in 200µl



Target Protein

Principal Names: CNR1, cannabinoid receptor 1 (brain), CANN6, CB-R, CB1, CB1A, CB1K5, CB1R, CNR, cannabinoid receptor 1, central cannabinoid receptor

Official Symbol: CNR1

Accession Number(s): NP_057167.2; NP_149421.2

Human GeneID(s): [1268](#)

Non-Human GeneID(s): 12801 (mouse), 25248 (rat)

Important Comments: This antibody is expected to recognize both reported isoforms (NP_057167.2; NP_149421.2). Reported variants represent identical protein: NP_001153731.1, NP_001153732.1, NP_057167.2, NP_001153730.1, NP_001153698.1

Immunogen

Peptide with sequence C-NITEFYNKSLSSFKE, from the internal region (near N Terminus) of the protein sequence according to NP_057167.2; NP_149421.2.

Please note the [peptide](#) is available for sale.

Purification and Storage

Purified from goat serum by ammonium sulphate precipitation followed by antigen affinity chromatography using the immunizing peptide.

Supplied at 0.5 mg/ml in Tris saline, 0.02% sodium azide, pH7.3 with 0.5% bovine serum albumin.

Aliquot and store at -20°C. Minimize freezing and thawing.

Applications Tested

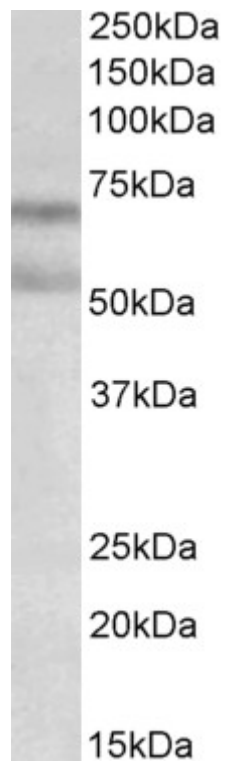
Peptide ELISA: antibody detection limit dilution 1:32000.

Western blot: Approx 70+55kDa bands observed in Rat Brain lysates (calculated MW of 52.9kDa according to Human NP_057167.2 and 52.8kDa according to Rat NP_036916.1). The observed molecular weight corresponds to earlier findings in literature with different antibodies (Porcella et al, Eur J Neurosci. 2000 Mar;12(3):1123-7. PMID: 10762343). Recommended concentration: 1-3µg/ml.

Species Reactivity

Tested: Rat

Expected from sequence similarity: Human, Mouse, Rat, Dog, Pig, Cow



EB10960 (0.3 μ g/ml) staining of Rat Brain lysate (35 μ g protein in RIPA buffer). Primary incubation was 1 hour. Detected by chemiluminescence.