



UK Office

Everest Biotech Ltd

Cherwell Innovation Centre
77 Heyford Park
Upper Heyford
Oxfordshire
OX25 5HD
UK

Enquiries:

info@everestbiotech.com

Sales:

sales@everestbiotech.com

Tech support:

support@everestbiotech.com

Tel: +44 (0)1869 238326

Fax: +44 (0)1869 238327

US Office

Everest Biotech c/o Abcore

405 Maple Street, Suite A106
Ramona,
CA 92065
USA

Inquiries:

info@everestbiotech.com

Sales:

usasales@everestbiotech.com

Tech support:

support@everestbiotech.com

Tel: 888-320-4628 (toll-free)

Fax: 888-841-9041

www.everestbiotech.com

**Research Use Only. Not for
diagnostic or therapeutic use.**

EB10862 - Goat Anti-CBARA1 (aa113-126) Antibody

Size: 100µg specific antibody in 200µl



Target Protein

Principal Names: CBARA1, calcium binding atopy-related autoantigen 1, CALC, DKFZp564C246, EFHA3, FLJ12684, OTTHUMP00000019787, ara CALC, atopy related autoantigen, calcium-binding atopy-related autoantigen 1

Official Symbol: MICU1

Accession Number(s): NP_006068.2; NP_001182447.1

Human GeneID(s): [10367](#)

Non-Human GeneID(s): 216001 (mouse), 365567 (rat)

Important Comments: This antibody is expected to recognize reported isoforms 1 and 2 (NP_006068.2; NP_001182447.1).

Immunogen

Peptide with sequence C-EYENRIRAYSTPDK, from the internal region of the protein sequence according to NP_006068.2; NP_001182447.1.

Please note the [peptide](#) is available for sale.

Purification and Storage

Purified from goat serum by ammonium sulphate precipitation followed by antigen affinity chromatography using the immunizing peptide.

Supplied at 0.5 mg/ml in Tris saline, 0.02% sodium azide, pH7.3 with 0.5% bovine serum albumin.

Aliquot and store at -20°C. Minimize freezing and thawing.

Applications Tested

Peptide ELISA: antibody detection limit dilution 1:32000.

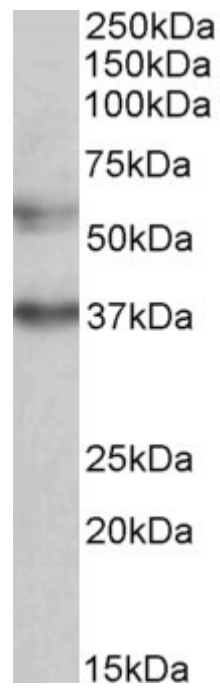
Western blot: Approx 55kDa band observed in lysates of cell line K562 (calculated MW of 54.6kDa according to NP_006068.2). Recommended concentration: 0.5-2µg/ml. An additional band of unknown identity was also consistently observed at 37kDa. This band was successfully blocked by incubation with the immunizing peptide.

IHC: Paraffin embedded Human Lung. Recommended concentration: 3.75µg/ml.

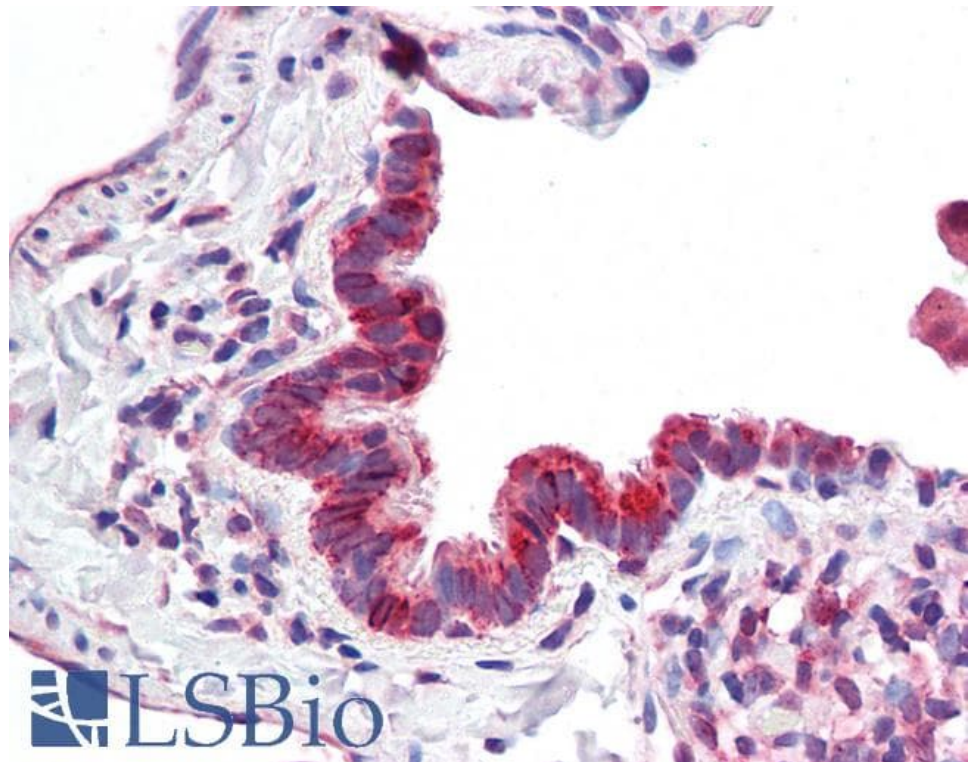
Species Reactivity

Tested: Human

Expected from sequence similarity: Human, Mouse, Rat, Dog, Pig, Cow



EB10862 (0.5µg/ml) staining of K562 lysate (35µg protein in RIPA buffer). Primary incubation was 1 hour.
Detected by chemiluminescence.



EB10862 (3.75µg/ml) staining of paraffin embedded Human Lung. Steamed antigen retrieval with citrate buffer pH 6, AP-staining.