

## International Office

### Everest Biotech Ltd

Vector Laboratories, Inc.  
6737 Mowry Ave  
Newark, CA 94560  
United States

Customer Service:

[customerservice@vectorlabs.com](mailto:customerservice@vectorlabs.com)

Technical Service:

[technical@vectorlabs.com](mailto:technical@vectorlabs.com)

Tel: +1 (800) 227-6666

[www.everestbiotech.com](http://www.everestbiotech.com)

**Research Use Only. Not for  
diagnostic or therapeutic use.**

## EB12158 - Goat Anti-CBFB Antibody

Size: 100µg specific antibody in 200µl



### Target Protein

**Principal Names:** CBFB, core-binding factor, beta subunit, PEBP2B, CBF-beta, PEA2-beta, PEBP2-beta, SL3-3 enhancer factor 1 beta subunit, SL3-3 enhancer factor 1 subunit beta, SL3/AKV core-binding factor beta subunit, core-binding factor subunit beta, polyomavirus enhancer binding protein 2, beta subunit, polyomavirus enhancer-binding protein 2 beta subunit

**Official Symbol:** CBFB

**Accession Number(s):** NP\_074036.1; NP\_001746.1

**Human GeneID(s):** [865](#)

**Non-Human GeneID(s):** 12400 (mouse)

**Important Comments:** This antibody is expected to recognize reported isoform 1 (NP\_074036.1) only, however it is expected to recognize reported mouse isoforms 1 (NP\_071704.3), 2 (NP\_001154928.1) and 3 (NP\_001154929.1).

### Immunogen

Peptide with sequence C-EARRQQDPSPGSN, from the internal region (near C Terminus) of the protein sequence according to NP\_074036.1; NP\_001746.1.

Please note the [peptide](#) is available for sale.

### Purification and Storage

Purified from goat serum by ammonium sulphate precipitation followed by antigen affinity chromatography using the immunizing peptide.

Supplied at 0.5 mg/ml in Tris saline, 0.02% sodium azide, pH7.3 with 0.5% bovine serum albumin.

Aliquot and store at -20°C. Minimize freezing and thawing.

### Applications Tested

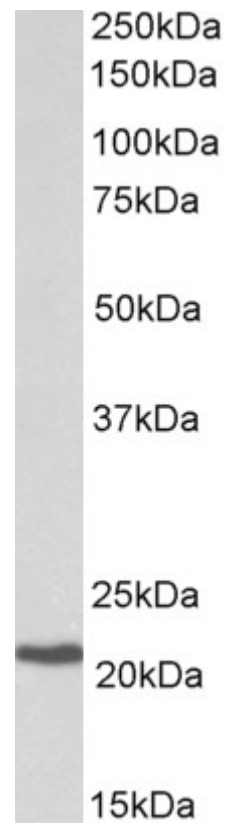
**Peptide ELISA:** antibody detection limit dilution 1:2000.

**Western blot:** Approx 22kDa band observed in lysates of cell line Daudi (calculated MW of 22.0kDa according to NP\_074036.1). Recommended concentration: 0.3-1µg/ml.

### Species Reactivity

**Tested:** Human

**Expected from sequence similarity:** Human, Mouse, Dog



EB12158 (0.3 $\mu$ g/ml) staining of Daudi lysate (35 $\mu$ g protein in RIPA buffer). Primary incubation was 1 hour.  
Detected by chemiluminescence.