



## UK Office

### Everest Biotech Ltd

Cherwell Innovation Centre  
77 Heyford Park  
Upper Heyford  
Oxfordshire  
OX25 5HD  
UK

Enquiries:

[info@everestbiotech.com](mailto:info@everestbiotech.com)

Sales:

[sales@everestbiotech.com](mailto:sales@everestbiotech.com)

Tech support:

[support@everestbiotech.com](mailto:support@everestbiotech.com)

Tel: +44 (0)1869 238326

[www.everestbiotech.com](http://www.everestbiotech.com)

**Research Use Only. Not for  
diagnostic or therapeutic use.**

## EB05288-T - Goat Anti-CBL Antibody - Trial

Size: 20µg specific antibody in 40µl



### Target Protein

**Principal Names:** CBL, CBL2, C-CBL, RNF55, Cas-Br-M (murine) ecotropic retroviral transforming sequence, Cas-Br-M ecotropic retroviral transforming sequence (Oncogene CBL2), oncogene CBL2

**Official Symbol:** CBL

**Accession Number(s):** NP\_005179.2

**Human GeneID(s):** [867](#)

**Non-Human GeneID(s):** 12402 (mouse)

### Immunogen

Peptide with sequence C-REFVSISSPAHVAT, from the C Terminus of the protein sequence according to NP\_005179.2.

Please note the [peptide](#) is available for sale.

### Purification and Storage

Purified from goat serum by ammonium sulphate precipitation followed by antigen affinity chromatography using the immunizing peptide.

Supplied at 0.5 mg/ml in Tris saline, 0.02% sodium azide, pH7.3 with 0.5% bovine serum albumin.

Aliquot and store at -20°C. Minimize freezing and thawing.

### Applications Tested

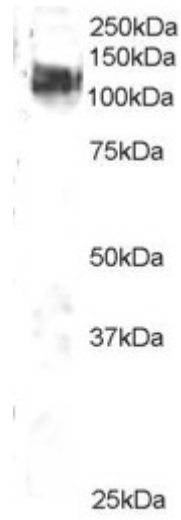
**Peptide ELISA:** antibody detection limit dilution 1:32000.

**Western blot:** Approx 120kDa band seen in 3T3 lysate. Recommended for use at 1-3µg/ml.

### Species Reactivity

**Tested:** Mouse

**Expected from sequence similarity:** Human, Mouse, Rat, Dog, Pig, Cow



EB05288 staining (2 $\mu$ g/ml) of 3T3 lysate (RIPA buffer, 35 $\mu$ g total protein per lane). Primary incubated for 1 hour.  
Detected by western blot using chemiluminescence.