



UK Office

Everest Biotech Ltd

Cherwell Innovation Centre
77 Heyford Park
Upper Heyford
Oxfordshire
OX25 5HD
UK

Enquiries:

info@everestbiotech.com

Sales:

sales@everestbiotech.com

Tech support:

support@everestbiotech.com

Tel: +44 (0)1869 238326

www.everestbiotech.com

**Research Use Only. Not for
diagnostic or therapeutic use.**

EB05288 - Goat Anti-CBL Antibody

Size: 100µg specific antibody in 200µl



Target Protein

Principal Names: CBL, CBL2, C-CBL, RNF55, Cas-Br-M (murine) ecotropic retroviral transforming sequence, Cas-Br-M ecotropic retroviral transforming sequence (Oncogene CBL2), oncogene CBL2

Official Symbol: CBL

Accession Number(s): NP_005179.2

Human GeneID(s): [867](#)

Non-Human GeneID(s): 12402 (mouse)

Immunogen

Peptide with sequence C-REFVSISSPAHVAT, from the C Terminus of the protein sequence according to NP_005179.2.

Please note the [peptide](#) is available for sale.

Purification and Storage

Purified from goat serum by ammonium sulphate precipitation followed by antigen affinity chromatography using the immunizing peptide.

Supplied at 0.5 mg/ml in Tris saline, 0.02% sodium azide, pH7.3 with 0.5% bovine serum albumin.

Aliquot and store at -20°C. Minimize freezing and thawing.

Applications Tested

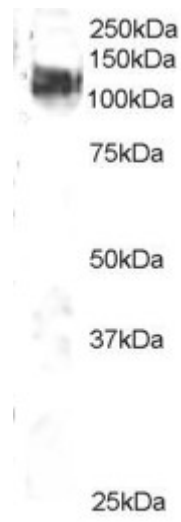
Peptide ELISA: antibody detection limit dilution 1:32000.

Western blot: Approx 120kDa band seen in 3T3 lysate. Recommended for use at 1-3µg/ml.

Species Reactivity

Tested: Mouse

Expected from sequence similarity: Human, Mouse, Rat, Dog, Pig, Cow



EB05288 staining (2 μ g/ml) of 3T3 lysate (RIPA buffer, 35 μ g total protein per lane). Primary incubated for 1 hour.
Detected by western blot using chemiluminescence.