



## UK Office

### Everest Biotech Ltd

Cherwell Innovation Centre  
77 Heyford Park  
Upper Heyford  
Oxfordshire  
OX25 5HD  
UK

Enquiries:

[info@everestbiotech.com](mailto:info@everestbiotech.com)

Sales:

[sales@everestbiotech.com](mailto:sales@everestbiotech.com)

Tech support:

[support@everestbiotech.com](mailto:support@everestbiotech.com)

Tel: +44 (0)1869 238326

[www.everestbiotech.com](http://www.everestbiotech.com)

**Research Use Only. Not for  
diagnostic or therapeutic use.**

## EB05515 - Goat Anti-CBR1 Antibody

Size: 100µg specific antibody in 200µl



### Target Protein

**Principal Names:** CBR1, carbonyl reductase 1, CBR, carbonyl reductase (NADPH), carbonyl reductase (NADPH) 1, hCBR1, prostaglandin 9-ketoreductase, prostaglandin-E(2) 9-reductase, SDR21C1, short chain dehydrogenase/reductase family 21C, member 1

**Official Symbol:** CBR1

**Accession Number(s):** NP\_001748.1

**Human GeneID(s):** [873](#)

### Immunogen

Peptide with sequence C-HGQFVSEKRVEQW, from the C Terminus of the protein sequence according to NP\_001748.1.

Please note the [peptide](#) is available for sale.

### Purification and Storage

Purified from goat serum by ammonium sulphate precipitation followed by antigen affinity chromatography using the immunizing peptide.

Supplied at 0.5 mg/ml in Tris saline, 0.02% sodium azide, pH7.3 with 0.5% bovine serum albumin.

Aliquot and store at -20°C. Minimize freezing and thawing.

### Applications Tested

**Peptide ELISA:** antibody detection limit dilution 1:4000.

**Western blot:** Approx 30-35kDa band observed in Human Liver lysates (calculated MW of 30.4kDa according to NP\_001748.1). Recommended concentration: 0.03-0.1µg/ml. Primary incubation 1 hour at room temperature.

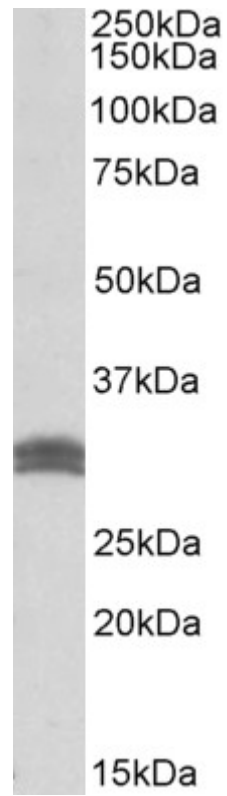
**IHC:** Paraffin embedded Human Kidney. Recommended concentration: 5µg/ml.

**Immunofluorescence:** Strong expression of the protein seen in the cytoplasm of U251 cells. Recommended concentration: 10µg/ml.

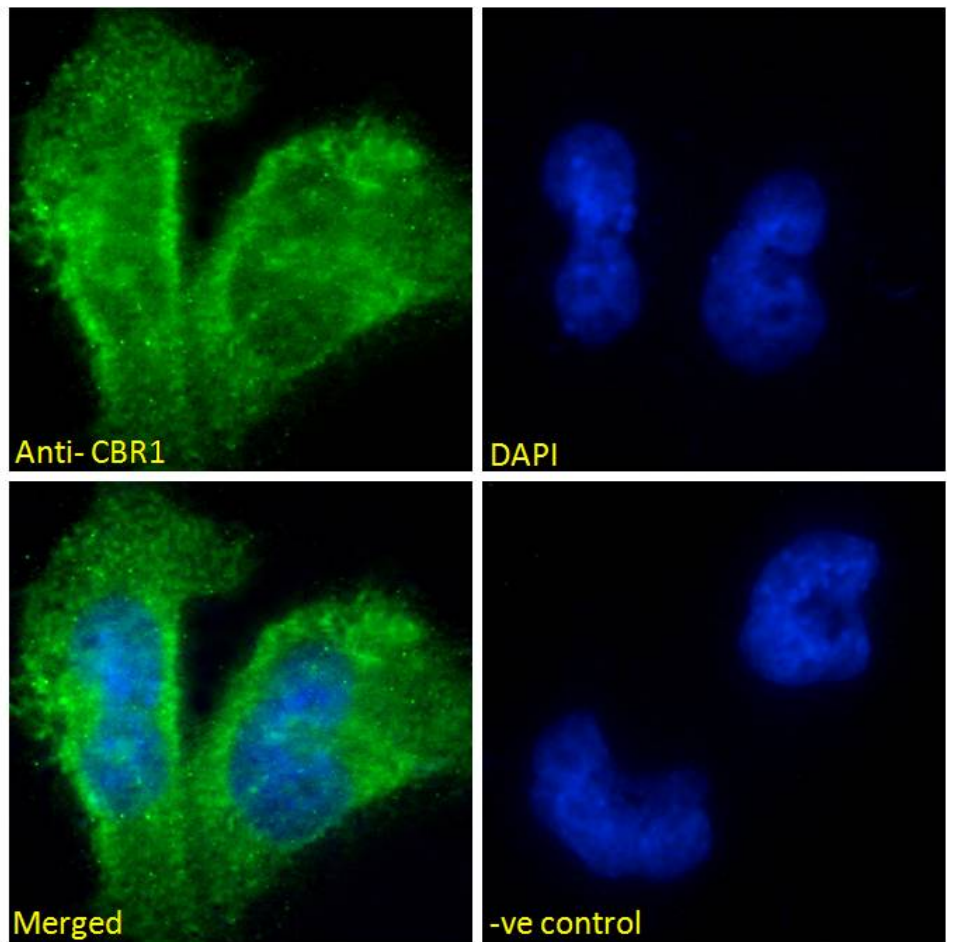
### Species Reactivity

**Tested:** Human

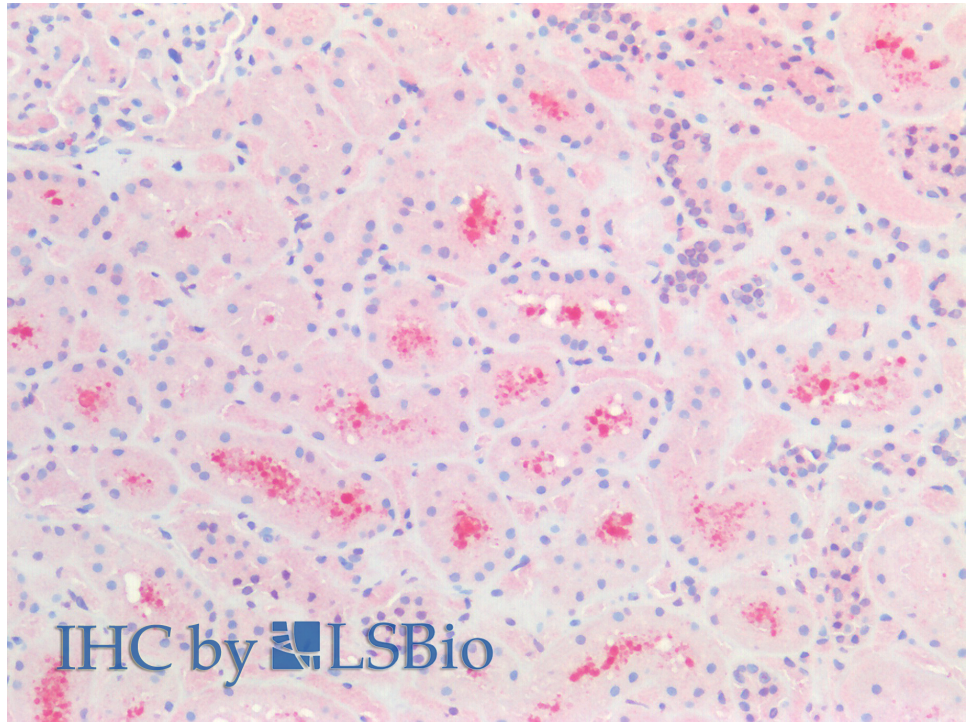
**Expected from sequence similarity:** Human



EB05515 (0.03ug/ml) staining of Human Liver lysate (35ug protein in RIPA buffer. Detected by chemiluminescence.



EB05515 Immunofluorescence analysis of paraformaldehyde fixed U251 cells, permeabilized with 0.15% Triton. Primary incubation 1hr (10ug/ml) followed by Alexa Fluor 488 secondary antibody (2ug/ml), showing cytoplasmic staining. The nuclear stain is DAPI (blue). Negative control: Unimmunized goat IgG (10ug/ml) followed by Alexa Fluor 488 secondary antibody (2ug/ml).



EB05515 (5µg/ml) staining of paraffin embedded Human Kidney. Steamed antigen retrieval with citrate buffer pH 6, AP-staining.