



International Office

Everest Biotech Ltd

Vector Laboratories, Inc.
6737 Mowry Ave
Newark, CA 94560
United States

Customer Service:

customerservice@vectorlabs.com

Technical Service:

technical@vectorlabs.com

Tel: +1 (800) 227-6666

www.everestbiotech.com

**Research Use Only. Not for
diagnostic or therapeutic use.**

EB06958 - Goat Anti-CBX1 / HP1-Beta Antibody

Size: 100µg specific antibody in 200µl



Target Protein

Principal Names: CBX1, HP1-BETA, chromobox homolog 1 (HP1 beta homolog Drosophila), HGNC:1551, CBX, HP1Hs-beta, M31, MOD1, chromobox homolog 1 (Drosophila HP1 beta), heterochromatin protein p25 beta, HP1Hsbeta, p25beta, heterochromatin protein 1-beta, modifier 1 protein

Official Symbol: CBX1

Accession Number(s): NP_006798.1; NP_001120700.1

Human GeneID(s): [10951](#)

Non-Human GeneID(s): 12412 (mouse), 360609 (rat)

Important Comments: Variants (NP_006798.1; NP_001120700.1) encode the same protein.

Immunogen

Peptide with sequence C-QSQKTAHETDKSE, from the internal region of the protein sequence according to NP_006798.1; NP_001120700.1.

Please note the [peptide](#) is available for sale.

Purification and Storage

Purified from goat serum by ammonium sulphate precipitation followed by antigen affinity chromatography using the immunizing peptide.

Supplied at 0.5 mg/ml in Tris saline, 0.02% sodium azide, pH7.3 with 0.5% bovine serum albumin.

Aliquot and store at -20°C. Minimize freezing and thawing.

Applications Tested

Peptide ELISA: antibody detection limit dilution 1:32000.

Western blot: Approx. 25kDa band observed in lysates of A431, HeLa and HepG2 (calculated MW of 25kDa according to NP_006798.1). Recommended concentration: 0.3-1.0 µg/ml.

IHC: In paraffin embedded Human Placenta shows strong nuclear staining in trophoblasts. Recommended concentration, 2-3µg/ml.

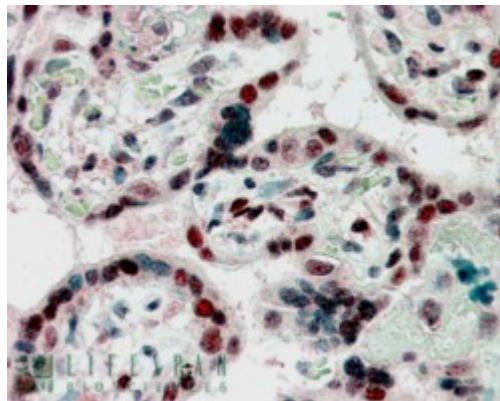
Species Reactivity

Tested: Human

Expected from sequence similarity: Human, Mouse, Rat, Dog, Cow



EB06958 (0.3 μ g/ml) staining of A431 lysate (35 μ g protein in RIPA buffer). Primary incubation was 1 hour. Detected by chemiluminescence.



EB06958 (2.5 μ g/ml) staining of paraffin embedded Human Placenta. Steamed antigen retrieval with citrate buffer pH 6, AP-staining.