



## UK Office

### Everest Biotech Ltd

Cherwell Innovation Centre  
77 Heyford Park  
Upper Heyford  
Oxfordshire  
OX25 5HD  
UK

Enquiries:

[info@everestbiotech.com](mailto:info@everestbiotech.com)

Sales:

[sales@everestbiotech.com](mailto:sales@everestbiotech.com)

Tech support:

[support@everestbiotech.com](mailto:support@everestbiotech.com)

Tel: +44 (0)1869 238326

Fax: +44 (0)1869 238327

## US Office

### Everest Biotech c/o Abcore

405 Maple Street, Suite A106  
Ramona,  
CA 92065  
USA

Inquiries:

[info@everestbiotech.com](mailto:info@everestbiotech.com)

Sales:

[usasales@everestbiotech.com](mailto:usasales@everestbiotech.com)

Tech support:

[support@everestbiotech.com](mailto:support@everestbiotech.com)

Tel: 888-320-4628 (toll-free)

Fax: 888-841-9041

[www.everestbiotech.com](http://www.everestbiotech.com)

**Research Use Only. Not for  
diagnostic or therapeutic use.**

## EB06958 - Goat Anti-CBX1 / HP1-Beta Antibody

Size: 100µg specific antibody in 200µl



### Target Protein

**Principal Names:** CBX1, HP1-BETA, chromobox homolog 1 (HP1 beta homolog Drosophila ), HGNC:1551, CBX, HP1Hs-beta, M31, MOD1, chromobox homolog 1 (Drosophila HP1 beta), heterochromatin protein p25 beta, HP1Hsbeta, p25beta, heterochromatin protein 1-beta, modifier 1 protein

**Official Symbol:** CBX1

**Accession Number(s):** NP\_006798.1; NP\_001120700.1

**Human GeneID(s):** [10951](#)

**Non-Human GeneID(s):** 12412 (mouse), 360609 (rat)

**Important Comments:** Variants (NP\_006798.1; NP\_001120700.1) encode the same protein.

### Immunogen

Peptide with sequence C-QSQKTAHETDKSE, from the internal region of the protein sequence according to NP\_006798.1; NP\_001120700.1.

Please note the [peptide](#) is available for sale.

### Purification and Storage

Purified from goat serum by ammonium sulphate precipitation followed by antigen affinity chromatography using the immunizing peptide.

Supplied at 0.5 mg/ml in Tris saline, 0.02% sodium azide, pH7.3 with 0.5% bovine serum albumin.

Aliquot and store at -20°C. Minimize freezing and thawing.

### Applications Tested

**Peptide ELISA:** antibody detection limit dilution 1:32000.

**Western blot:** Approx. 25kDa band observed in lysates of A431, HeLa and HepG2 (calculated MW of 25kDa according to NP\_006798.1). Recommended concentration: 0.3-1.0 µg/ml.

**IHC:** In paraffin embedded Human Placenta shows strong nuclear staining in trophoblasts. Recommended concentration, 2-3µg/ml.

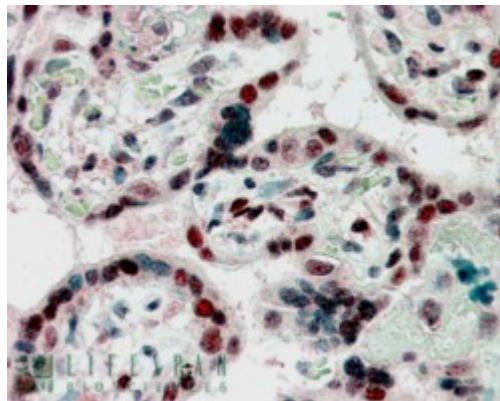
### Species Reactivity

**Tested:** Human

**Expected from sequence similarity:** Human, Mouse, Rat, Dog, Cow



EB06958 (0.3 $\mu$ g/ml) staining of A431 lysate (35 $\mu$ g protein in RIPA buffer). Primary incubation was 1 hour. Detected by chemiluminescence.



EB06958 (2.5 $\mu$ g/ml) staining of paraffin embedded Human Placenta. Steamed antigen retrieval with citrate buffer pH 6, AP-staining.