



International Office

Everest Biotech Ltd

Vector Laboratories, Inc.
6737 Mowry Ave
Newark, CA 94560
United States

Customer Service:

customerservice@vectorlabs.com

Technical Service:

technical@vectorlabs.com

Tel: +1 (800) 227-6666

www.everestbiotech.com

**Research Use Only. Not for
diagnostic or therapeutic use.**

EB07432 - Goat Anti-CBX2 Antibody

Size: 100µg specific antibody in 200µl



Target Protein

Principal Names: CBX2, chromobox homolog 2 (Pc class homolog, Drosophila), CDCA6, M33, MGC10561, M33 polycomb-like, cell division cycle associated 6, chromobox homolog 2, chromobox homolog 2 (Drosophila Pc class), modifier 3

Official Symbol: CBX2

Accession Number(s): NP_005180.1; NP_116036.1

Human GeneID(s): [84733](#)

Non-Human GeneID(s): 12416 (mouse), 303730 (rat)

Important Comments: This antibody is expected to recognise both reported isoforms (NP_005180.1 and NP_116036.1).

Immunogen

Peptide with sequence C-QKKEHEKEVQN, from the internal region of the protein sequence according to NP_005180.1; NP_116036.1.

Please note the [peptide](#) is available for sale.

Purification and Storage

Purified from goat serum by ammonium sulphate precipitation followed by antigen affinity chromatography using the immunizing peptide.

Supplied at 0.5 mg/ml in Tris saline, 0.02% sodium azide, pH7.3 with 0.5% bovine serum albumin.

Aliquot and store at -20°C. Minimize freezing and thawing.

Applications Tested

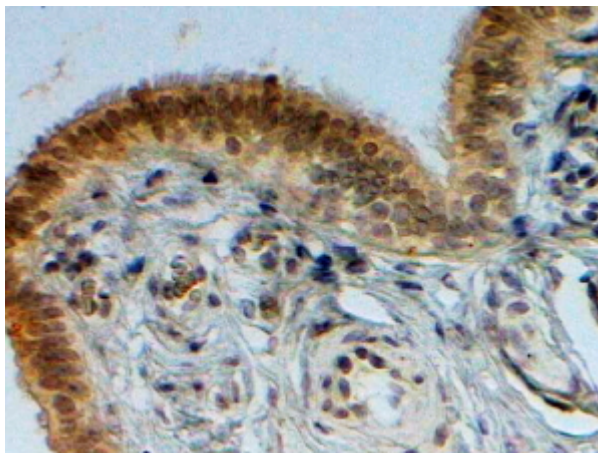
Peptide ELISA: antibody detection limit dilution 1:2000.

IHC: In paraffin embedded Human Ovary cancer shows nuclear staining most pronounced in the epithelium. Recommended concentration, 2-4µg/ml.

Species Reactivity

Tested: Human

Expected from sequence similarity: Human, Mouse. Rat, Dog



EB07432 (2µg/ml) staining of paraffin embedded Human Ovary cancer. Steamed antigen retrieval with citrate buffer pH 6, HRP-staining.