



UK Office

Everest Biotech Ltd

Cherwell Innovation Centre
77 Heyford Park
Upper Heyford
Oxfordshire
OX25 5HD
UK

Enquiries:

info@everestbiotech.com

Sales:

sales@everestbiotech.com

Tech support:

support@everestbiotech.com

Tel: +44 (0)1869 238326

www.everestbiotech.com

**Research Use Only. Not for
diagnostic or therapeutic use.**

EB09758 - Goat Anti-CCAR1 Antibody

Size: 100µg specific antibody in 200µl



Target Protein

Principal Names: CCAR1, cell division cycle and apoptosis regulator 1, CARP-1, CARP1, MGC44628, RP11-437A18.1, OTTHUMP00000019709, cell-cycle and apoptosis regulatory protein 1

Official Symbol: CCAR1

Accession Number(s): NP_060707.2

Human GeneID(s): [55749](#)

Non-Human GeneID(s): 361849 (mouse)

Immunogen

Peptide with sequence RYCKERPSKDKE, from the internal region (near C-Terminus) of the protein sequence according to NP_060707.2.

Please note the [peptide](#) is available for sale.

Purification and Storage

Purified from goat serum by ammonium sulphate precipitation followed by antigen affinity chromatography using the immunizing peptide.

Supplied at 0.5 mg/ml in Tris saline, 0.02% sodium azide, pH7.3 with 0.5% bovine serum albumin.

Aliquot and store at -20°C. Minimize freezing and thawing.

Applications Tested

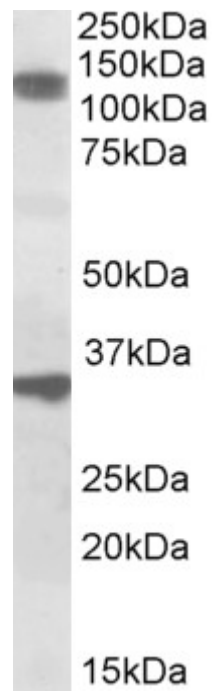
Peptide ELISA: antibody detection limit dilution 1:16000.

Western blot: Approx 120kDa band observed in Mouse and Rat Skeletal Muscle lysates (calculated MW of 132kDa according to Mouse NP_080477.1 and Rat NP_001102005.1). Recommended concentration: 1-3µg/ml. An additional band of unknown identity was also consistently observed at 33kDa. This band was successfully blocked by incubation with the immunizing peptide. We would appreciate any feedback from people in the field - have any such results been reported with other antibodies/lysates? Have any further splice variants/modified forms been reported?

Species Reactivity

Tested: Mouse, Rat

Expected from sequence similarity: Human, Rat, Dog, Cow, Pig



EB09758 (1 μ g/ml) staining of Rat Skeletal Muscle lysate (35 μ g protein in RIPA buffer). Primary incubation was 1 hour. Detected by chemiluminescence.