



EB09667 - Goat Anti-CCL20 Antibody

Size: 100µg specific antibody in 200µl



UK Office

Everest Biotech Ltd

Cherwell Innovation Centre
77 Heyford Park
Upper Heyford
Oxfordshire
OX25 5HD
UK

Enquiries:

info@everestbiotech.com

Sales:

sales@everestbiotech.com

Tech support:

support@everestbiotech.com

Tel: +44 (0)1869 238326

Fax: +44 (0)1869 238327

US Office

Everest Biotech c/o Abcore

405 Maple Street, Suite A106
Ramona,
CA 92065
USA

Inquiries:

info@everestbiotech.com

Sales:

usasales@everestbiotech.com

Tech support:

support@everestbiotech.com

Tel: 888-320-4628 (toll-free)

Fax: 888-841-9041

www.everestbiotech.com

Research Use Only. Not for diagnostic or therapeutic use.

Target Protein

Principal Names: CCL20, chemokine (C-C motif) ligand 20, CKb4, LARC, MIP-3a, MIP3A, SCYA20, ST38, exodus-1, macrophage inflammatory protein 3 alpha, small inducible cytokine subfamily A (Cys-Cys), member 20

Official Symbol: CCL20

Accession Number(s): NP_004582.1; NP_001123518.1

Human GeneID(s): [6364](#)

Important Comments: This antibody is expected to recognize both isoforms (NP_004582.1; NP_001123518.1).

Immunogen

Peptide with sequence CLGYTDRILHPK, from the internal region of the protein sequence according to NP_004582.1; NP_001123518.1.

Please note the [peptide](#) is available for sale.

Purification and Storage

Purified from goat serum by ammonium sulphate precipitation followed by antigen affinity chromatography using the immunizing peptide.

Supplied at 0.5 mg/ml in Tris saline, 0.02% sodium azide, pH7.3 with 0.5% bovine serum albumin.

Aliquot and store at -20°C. Minimize freezing and thawing.

Applications Tested

Peptide ELISA: antibody detection limit dilution 1:16000.

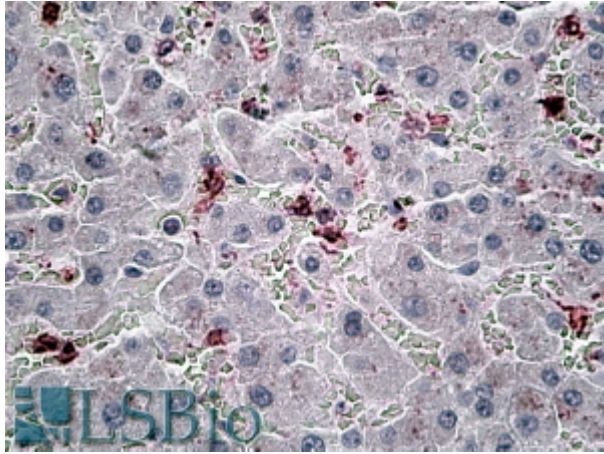
Western blot: Preliminary experiments in Human Peripheral Blood Mononucleocytes lysates gave no specific signal but low background (at antibody concentration up to 2µg/ml). We would appreciate any feedback from people in the field - have any results been reported with other antibodies/lysates?

IHC: In paraffin embedded Human Liver shows local staining between the hepatocytes.. Recommended concentration, 6-8µg/ml.

Species Reactivity

Tested: Human

Expected from sequence similarity: Human, Cow, Pig



EB09667 (6 μ g/ml) staining of paraffin embedded Human Liver. Steamed antigen retrieval with citrate buffer pH 6, AP-staining.